



MICHIGAN DEPARTMENT OF
ENVIRONMENT, GREAT LAKES, AND ENERGY

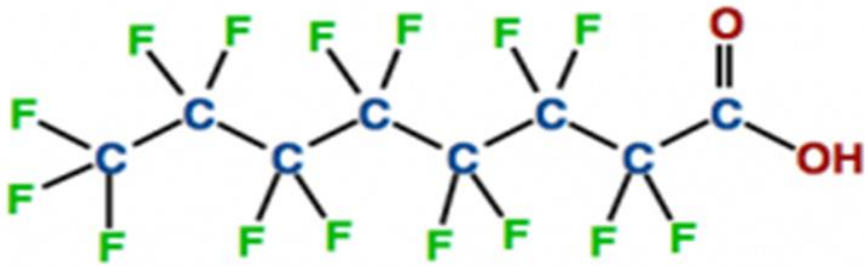
Former Du-Wel Site Hartford Town Hall Meeting May 15, 2019

David Harn, Assistant District Supervisor
Remediation and Redevelopment Division
517.897.0881 | harnd@michigan.gov

Outline

- Overview of PFAS
- Brief site history
- Results of recent PFAS testing at the Du-Wel Site
- Residential well testing
- Next steps

Per- and Polyfluoroalkyl Substances (PFAS)



PFOA - perfluorooctanoic acid

- **Strong carbon-fluorine bonds**
- Surfactants
- Repels water, oil, fat, and grease
- Began developing in 1940s
- 5,000+ compounds today

PFAS Uses



Aerospace



Apparel



Building and Construction



Chemicals and Pharmaceuticals



Electronics



Oil & Gas



Energy



Healthcare and Hospitals



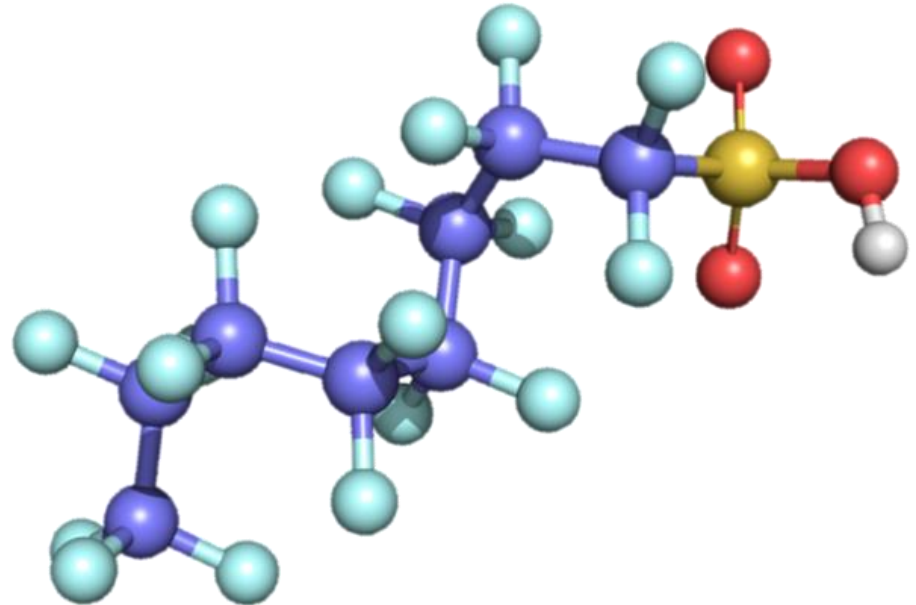
Aqueous Film Forming Foam



Semiconductors

Why the Concern?

- Widespread
- Don't break down easily; hard to get rid of
- Bioaccumulative – builds up in our bodies
- Some PFAS may affect health
- Lack of information
- Lack of standards



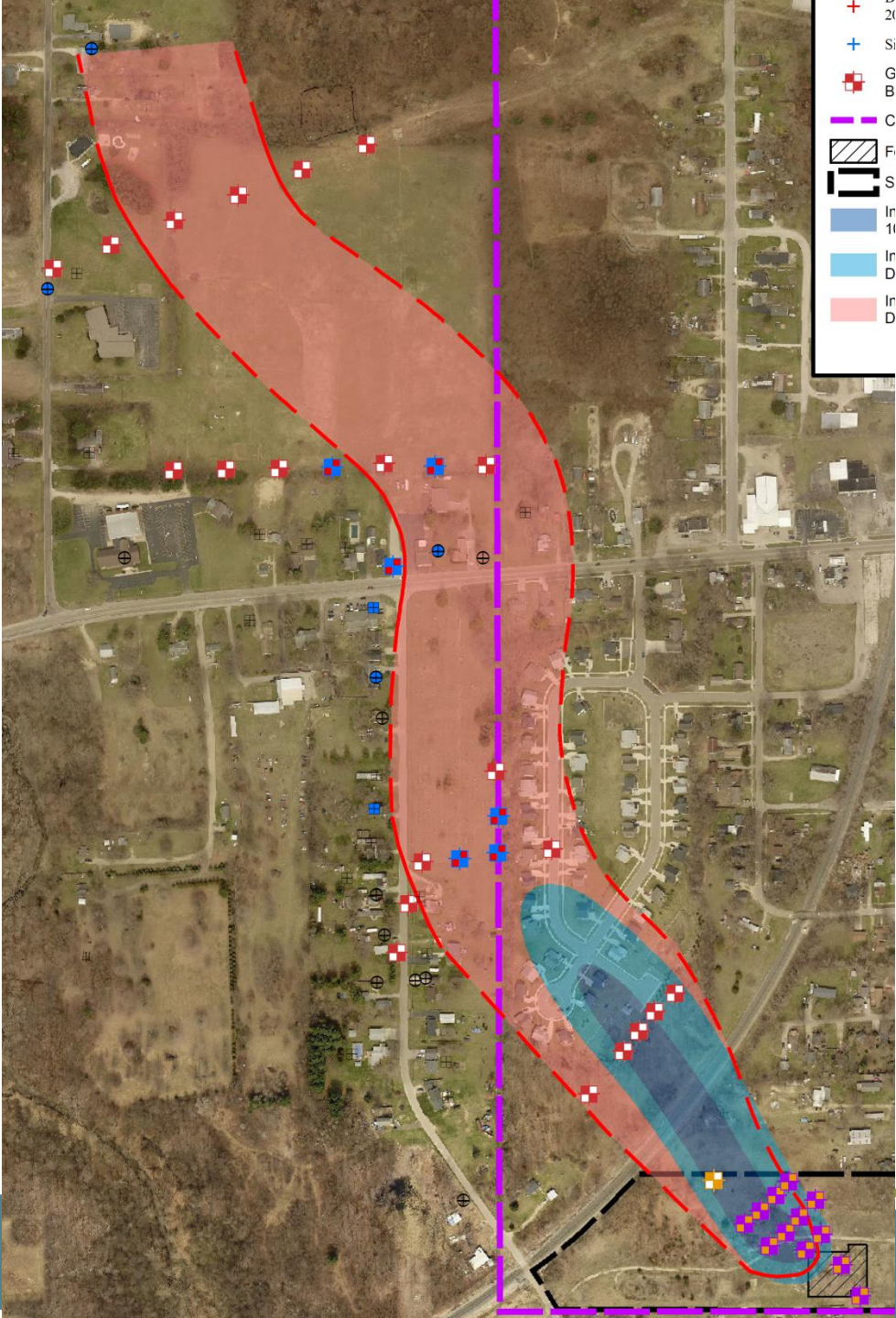
Site History

- Manufacturing facility from ~1957 to 2002
- Soil and groundwater investigations conducted by Du-Wel from 1987 to 2002
- Limited contaminated soil and plating wastes excavated in 1991 and 1992
- Company went bankrupt in 2003
- Property tax-reverted to Van Buren County

Site History (cont)

- In 1991, contamination discovered in Gala T Inn restaurant's drinking water well
- In 1995, state funds used to extend municipal water to restaurant and two residences
- Since 2002, EGLE has been conducting state-funded investigations of soil and groundwater
- EGLE also has been testing residential wells for volatile organic compounds




- + 20
- + Si
- + G
- + B
- C
- F
- S
- In 11
- In D
- In D



PFAS Sampling


- On April 19, 2019, EGLE collected samples from 19 monitoring wells for PFAS analysis
- On May 7, 2019, results from the sampling were received
- Highest onsite PFOA + PFOS concentration was 8,713 ppt
- Highest offsite PFOA + PFOS concentration was 317 ppt

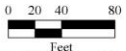
LEGEND

-  Existing Monitoring Wells
-  City Limits
-  Du-Wel Metals Site Boundary (Approximate)


NOTE:
Well ID; Well Depth (ft.)
(Total PEAS | PFOA | PFOS)
Analyte Results in PPT
ND = No Detection







0 20 40 80
Feet



VanBuren
County

Source of Aerial Imagery: ESRI
Projection: NAD83 State Plane Zone 2113 (Intl Feet)



EGLE
MICHIGAN DEPARTMENT OF
ENVIRONMENT, GREAT LAKES, AND ENERGY

Prepared for:
MICHIGAN DEPT. OF ENVIRONMENT, GREAT LAKES AND ENERGY
7953 Adobe Rd - Kalamazoo, Michigan 49009



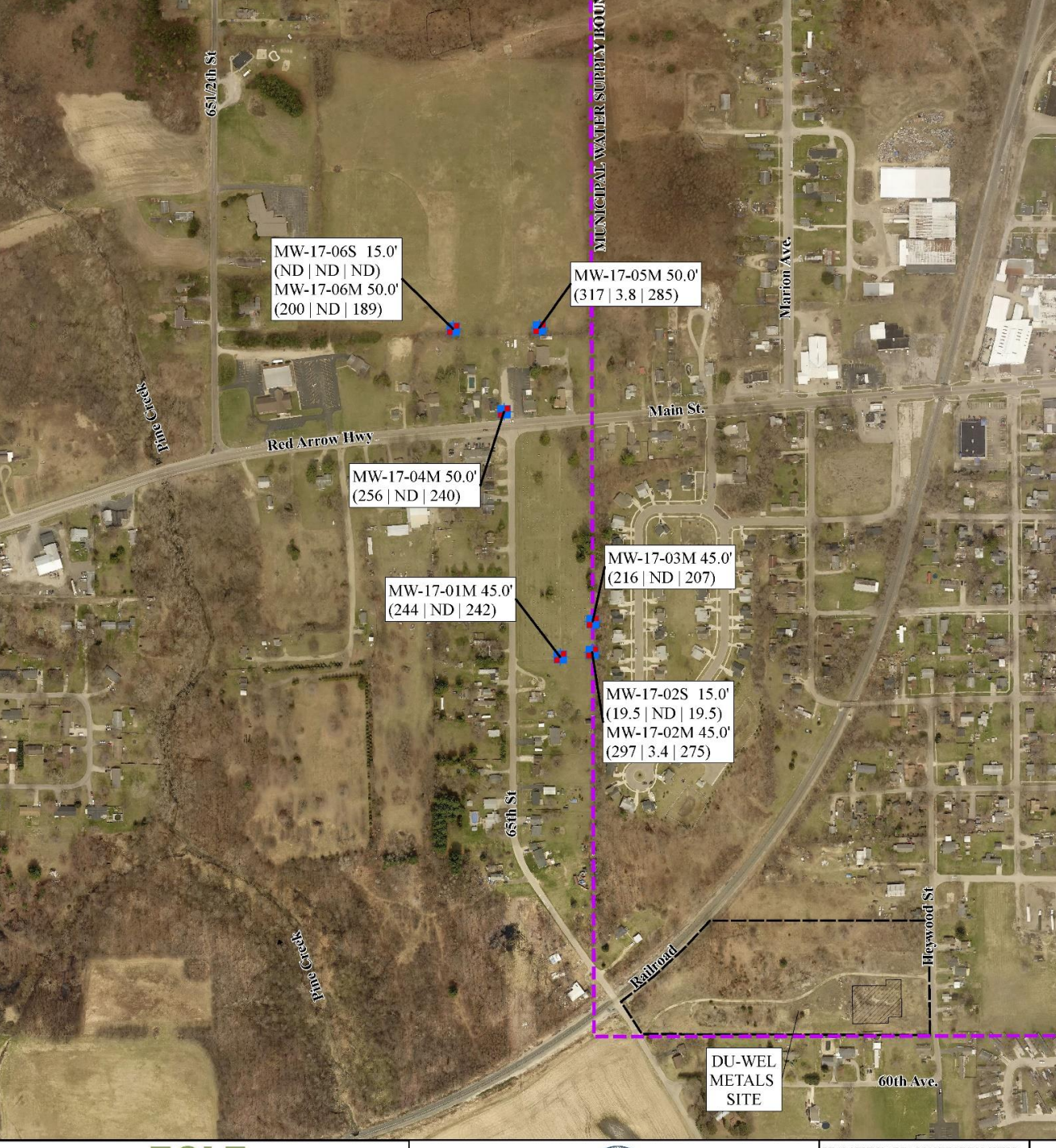
GLOBAL
REMEDIATION
TECHNOLOGIES

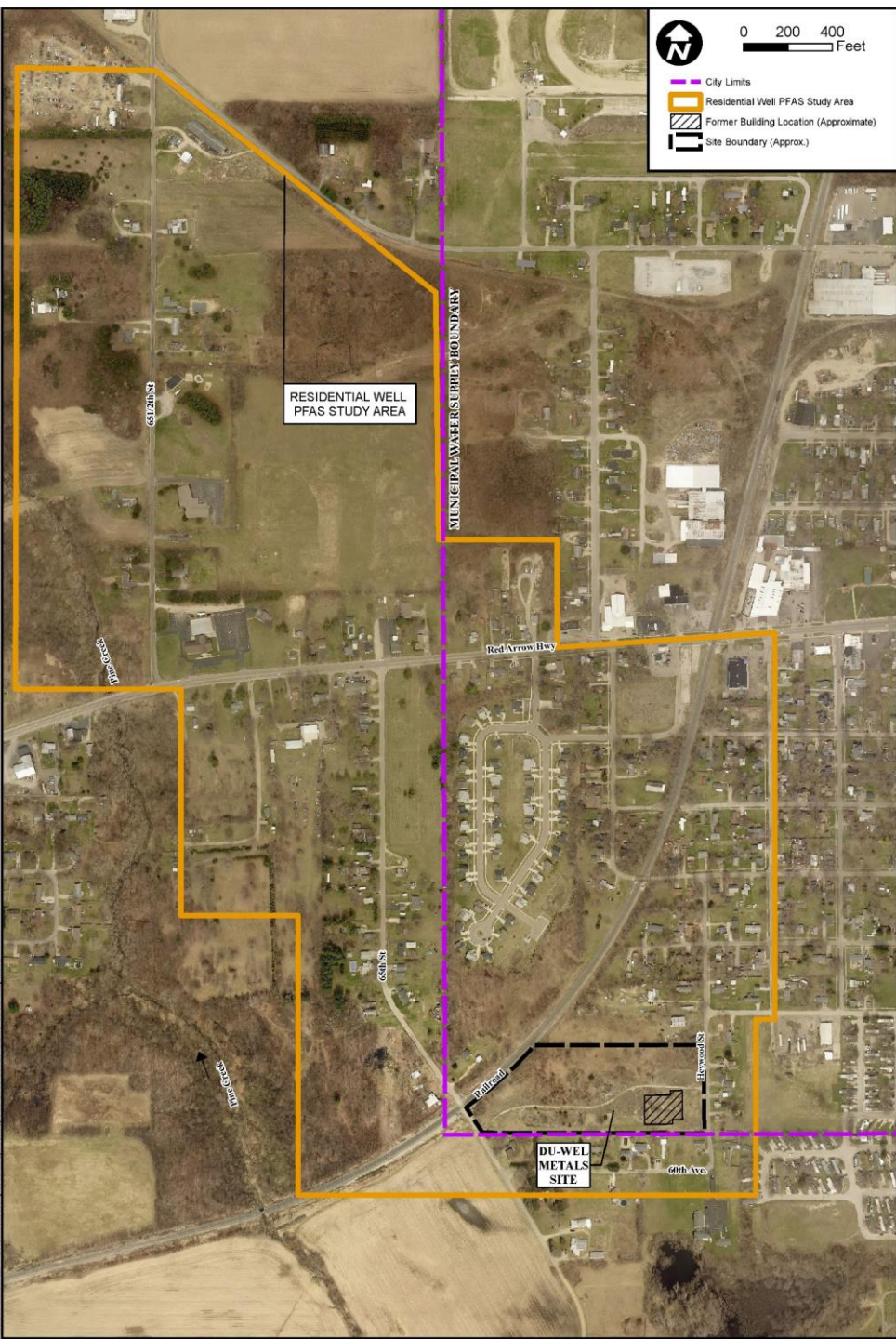
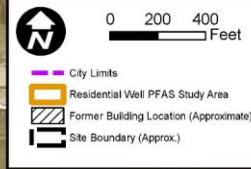
Prepared by:
GLOBAL REMEDIATION TECHNOLOGIES, INC.
1102 Cass Street - Traverse City, Michigan 49684

**ON-SITE PEAS MONITORING WELL
SAMPLING RESULTS**

DU-WEL METALS
HARTFORD, MICHIGAN
Created: May 2019 / Scale: as noted

FIGURE 3





Author: Ashburn P. Current: DHOI 5101 Engineering GIS 2019 PFAS Study Area Map.mxd

Next Steps

- Residential well results expected beginning week of May 20th
- State and local health to call residents about results
- Bottled water distribution to continue for well owners within study area
- Departments will meet to determine next steps
- Future public meeting

For More Information...

Michigan.gov

FAQS NEWS AND EDUCATION CONTACT MPART Q SEARCH

PFAS RESPONSE

TAKING ACTION, PROTECTING MICHIGAN

HEALTH

TESTING AND TREATMENT

MICHIGAN PFAS SITES

FISH AND WILDLIFE

FIREFIGHTING FOAM

ABOUT MPART

TAKING ACTION TO PROTECT THE PUBLIC'S WATER

Per- and polyfluoroalkyl substances (PFAS) are a large group of man-made chemicals that include perfluorooctanoic acid (PFOA) and perfluorooctanesulfonic acid (PFOS). PFAS have been used globally during the past century in manufacturing, firefighting and thousands of common household and other consumer products. These chemicals are persistent in the environment and in the human body – meaning they don't break down and they can accumulate over time. In recent years, experts have become increasingly concerned by the potential effects of high concentrations of PFAS on human health.

Although there is still more to learn about PFAS and human health, the State of Michigan takes this issue seriously and is one of the first states in the nation to establish a clean-up standard for PFAS in groundwater used for drinking water.

The Michigan PFAS Action Response Team (MPART) builds on previous work to research, identify, recommend, and implement PFAS response actions throughout the state. Agencies representing health, environment, natural resources, and other branches of state government have joined together to take action to protect Michigan's drinking water, investigate sources and locations of PFAS contamination in the state, and maintain transparency as we learn more about this nationally emerging contaminant.



www.michigan.gov/pfasresponse

EGLE

Michigan Department of
Environment, Great Lakes, and Energy

800-662-9278

Michigan.gov/EGLE



Follow us at: Michigan.gov/EGLEConnect