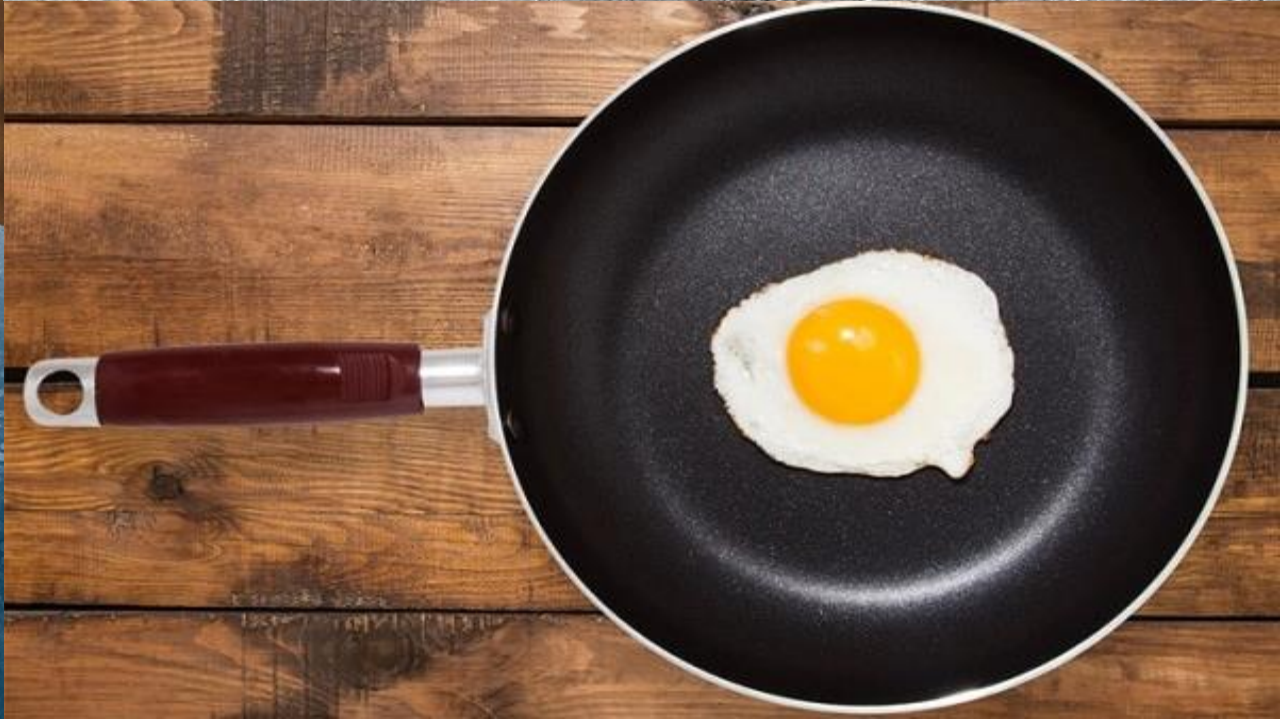


An aerial photograph of a landfill site. The landfill is a large, irregularly shaped area of light-colored earth and debris, located in the center-right of the image. It is bordered by a multi-lane road on its left side. To the left of the road is a dense forest of green trees. To the right of the landfill, there are several smaller areas of land, including what appears to be a parking lot with several vehicles and some buildings. The overall scene is a mix of natural greenery and industrial waste management infrastructure.

CENTRAL SANITARY LANDFILL PHASE I SAMPLING RESULTS

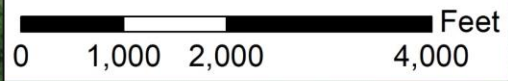


Legend

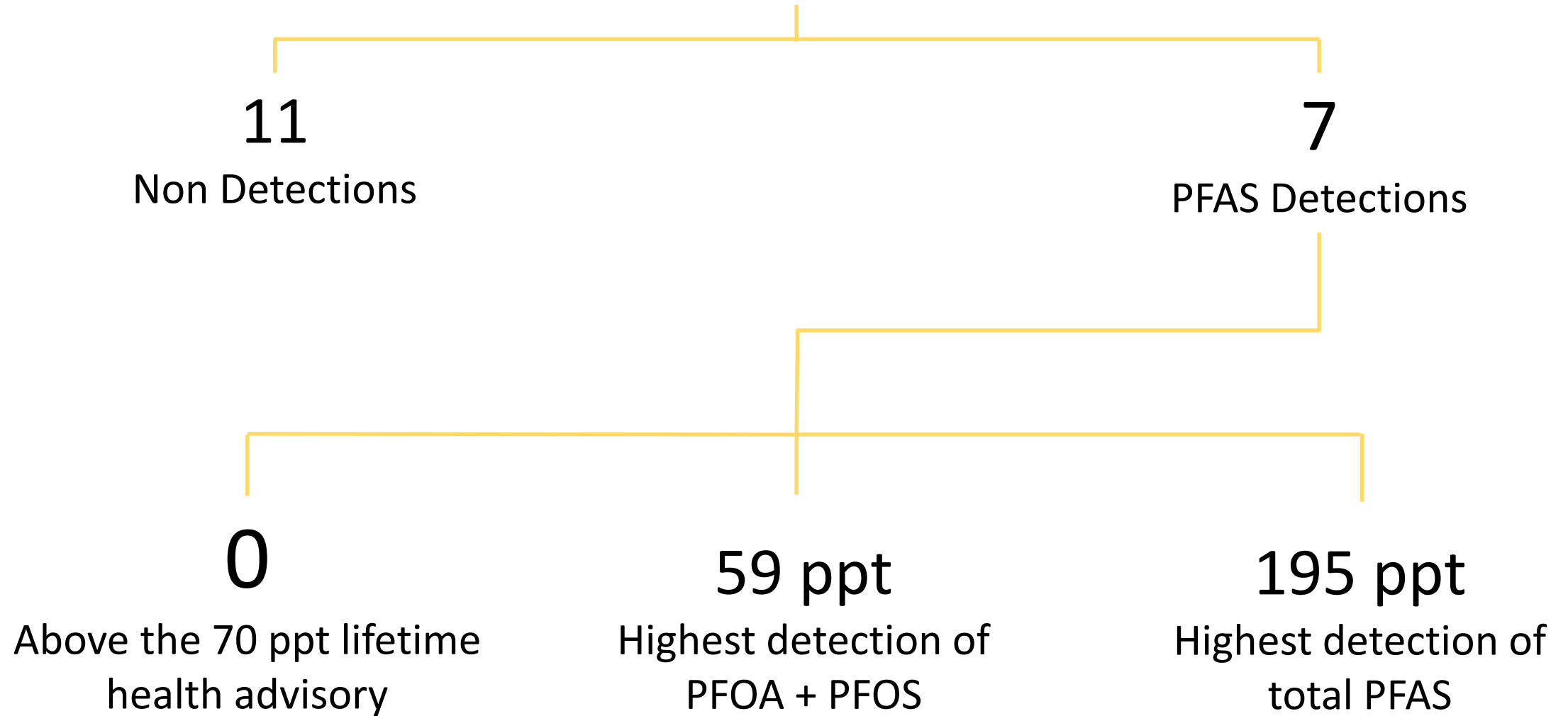
 Generalized Groundwater Flow Direction

 Landfill Waste Boundary

 Phase I Sampling Area



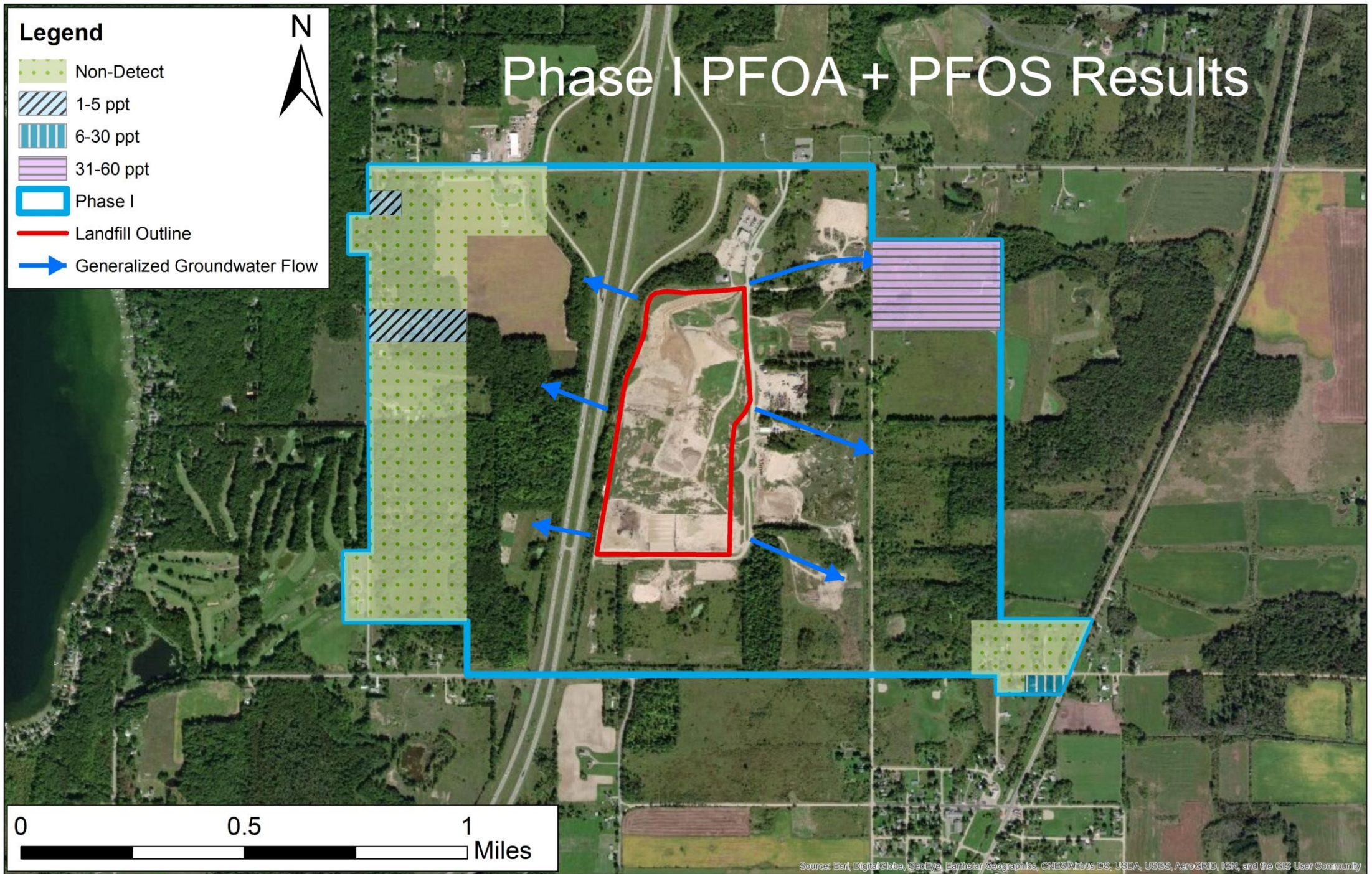
18 Water Supply Wells Sampled



Phase I PFOA + PFOS Results

Legend

- Non-Detect
- 1-5 ppt
- 6-30 ppt
- 31-60 ppt
- Phase I
- Landfill Outline
- Generalized Groundwater Flow



Source: Esri, DigitalGlobe, GeoEye, Earthstar Geographics, CNES/Airbus DS, USDA, USGS, AeroGRID, IGN, and the GIS User Community

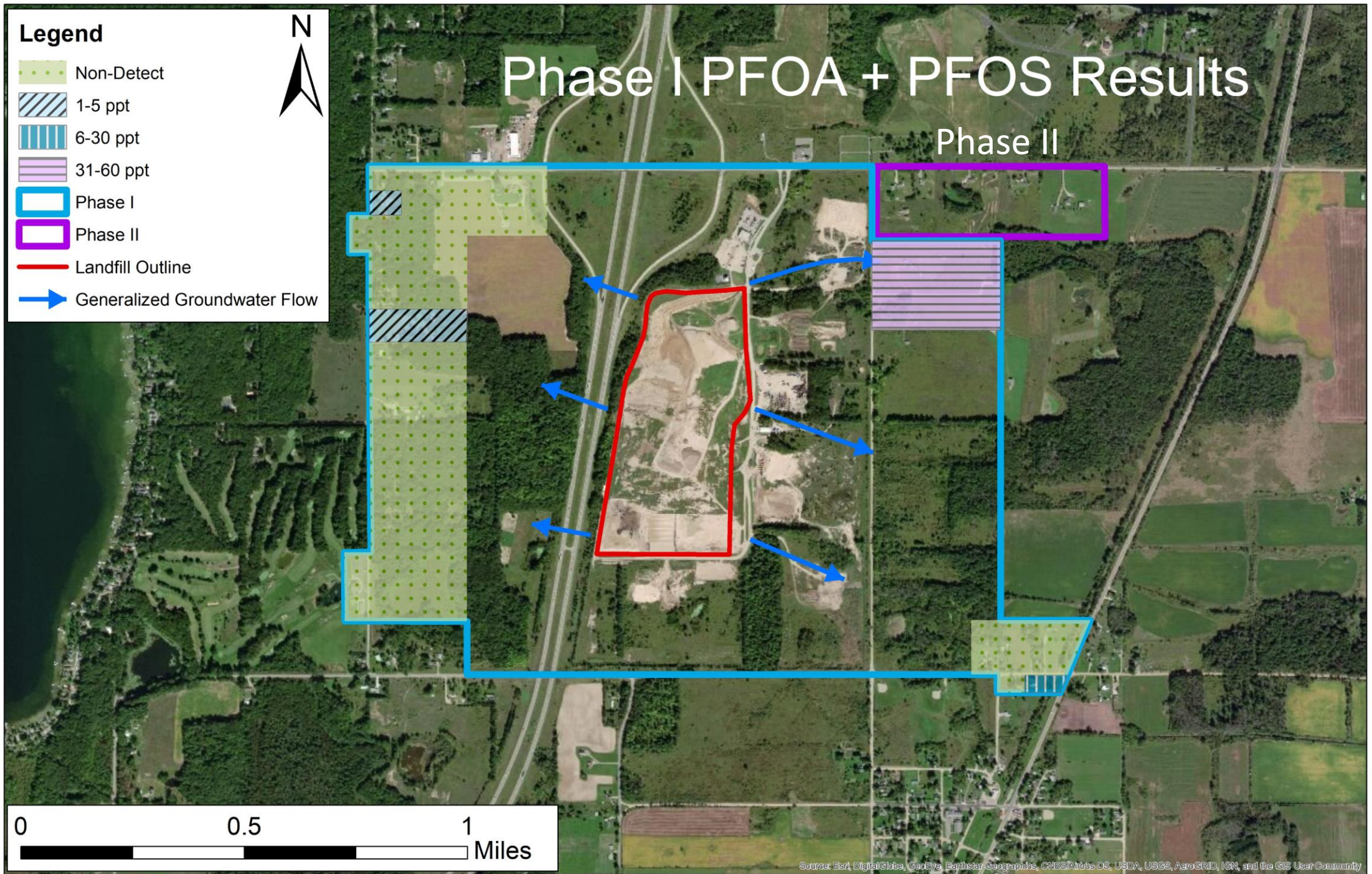
Legend

- Non-Detect
- 1-5 ppt
- 6-30 ppt
- 31-60 ppt
- Phase I
- Phase II
- Landfill Outline
- Generalized Groundwater Flow



Phase I PFOA + PFOS Results

Phase II



Source: Esri, DigitalGlobe, GeoEye, Earthstar Geographics, CNES/Airbus DS, USDA, USGS, AeroGRID, IGN, and the GIS User Community