



US-31 Rebuilding Project Benzie and Grand Traverse Counties

Michigan Department of Transportation Traverse City TSC

Tuesday, June 18, 2024





Introductions

MDOT Traverse City TSC

- Dan Wagner, P.E. - TSC Manager
- Lucas Porath, P.E. - Project Manager
- Krista Phillips, P.E. - Operations Engineer
- Jessica Carpenter, P.E. - Traffic and Safety Engineer
- Ian Neerken, P.E. – Design Engineer
- Heidi Phaneuf – Region Planner

RS Engineering, A Clark Dietz Co. (Design Consultant)

- Brian Smith, P.E. - Project Manager
- Leigh Burgess, P.E./PTOE - Lead Traffic Engineer
- Alex Oosterhoff, P.E. - Road Design Engineer

Agenda

Presentation

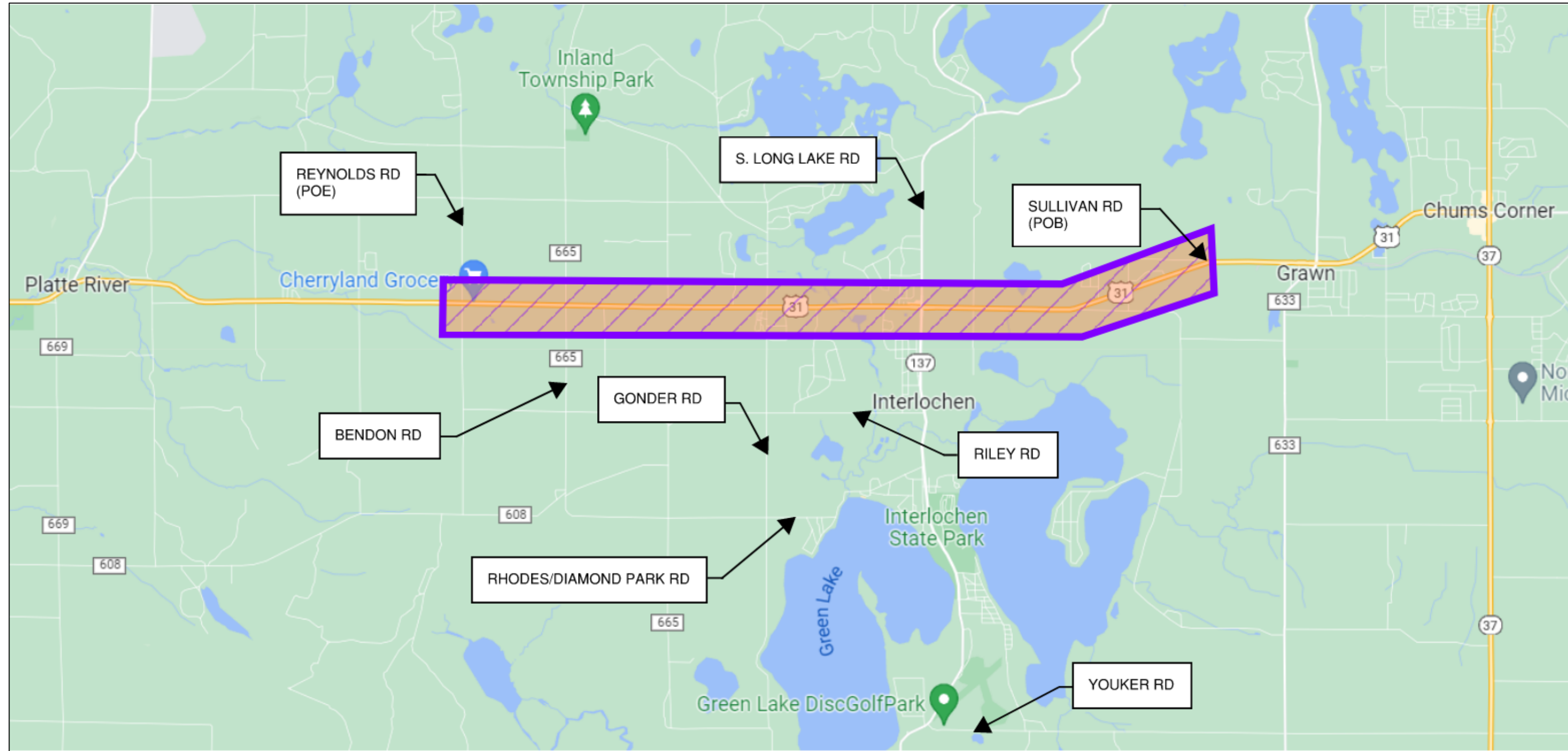
- Project Overview
- Public Meeting #1 Comments
- Project Update
- Maintenance of Traffic
 - US-31 full detour
 - US-31 partial detour
- Schedule
- General Group Questions

Open House (One-on-One)

Project Overview

Project Corridor: US-31 between Reynolds Road and Sullivan Road

Project Length and Type: 7.8-mile two-lane, two-way rural roadway





Public Meeting #1 Comments

Interlochen Corner alternative:

- Variety of concerns for both the roundabout and the signal modernization with left-turn arrows
- Roundabout concerns (inability to handle semis/campers and rush hour/concert traffic, reduced gaps outside intersection)
- Signal concerns (does not improve safety or reduce speeds/red-light running)

How is Hudson Development and other development accounted for?

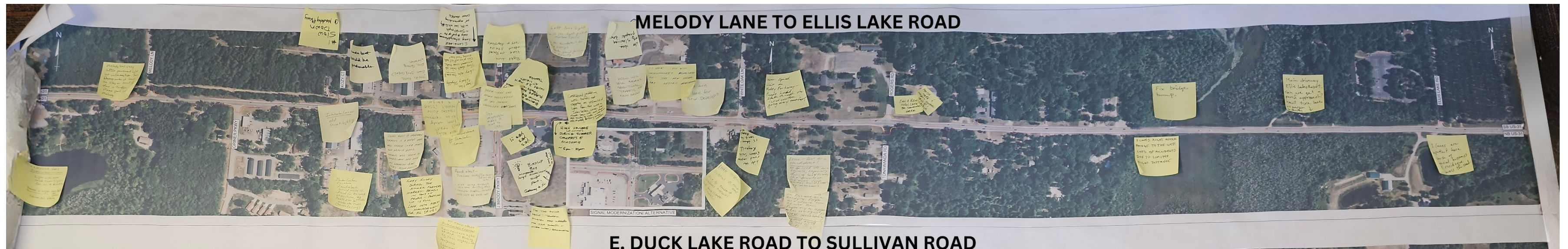
Road settlement concerns at bridges.

E. Duck Lake intersection:

- Poor sight distance
- Speed of northbound US-31 right-turning vehicles
- Close access (move to Pine Tree)

Betsie River intersection sight distance concern.

Delay at Gonder, Lake Ann/Bendon, and Reynolds road intersections.



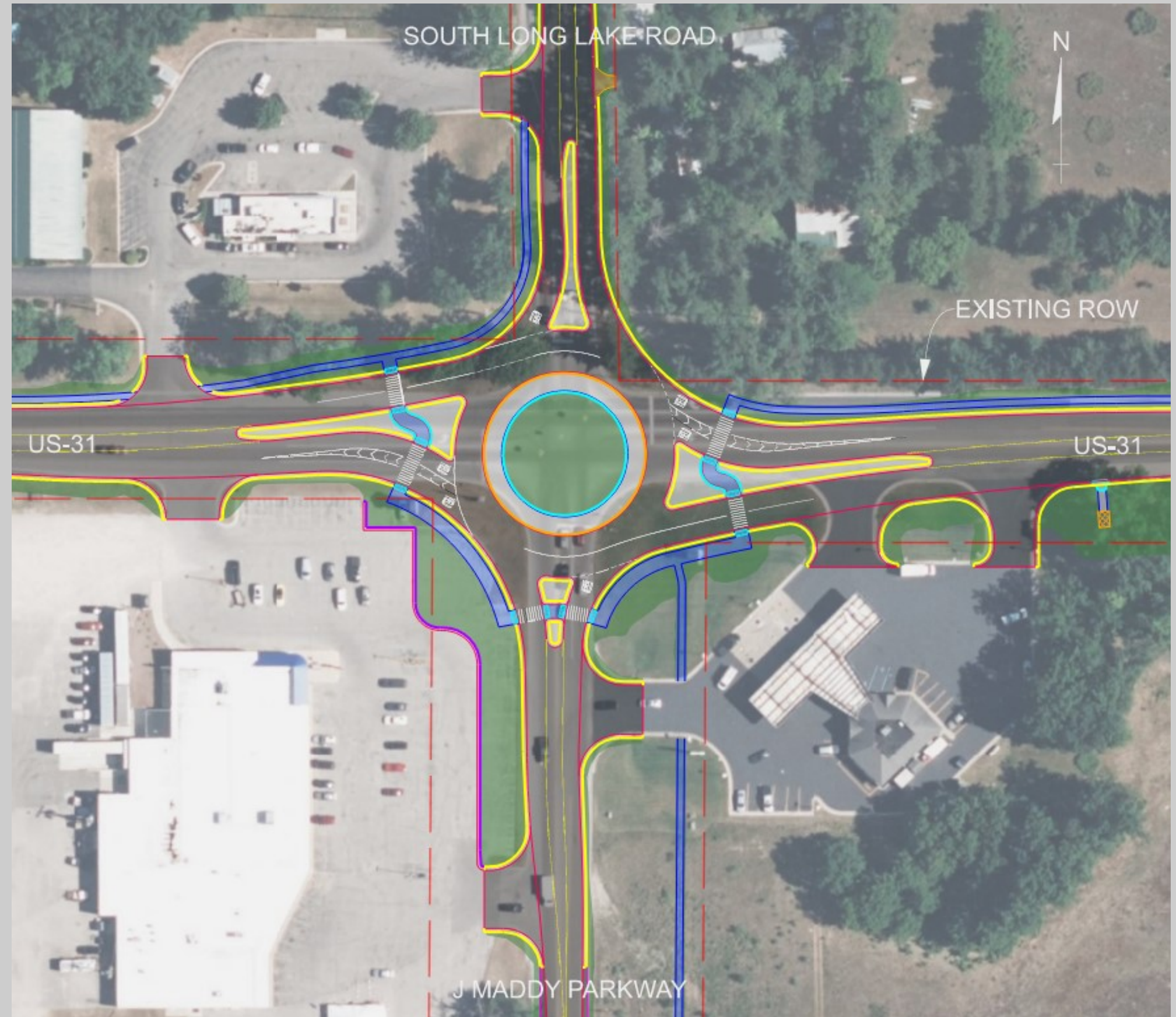


Project Update

Roundabout: Selected alternative for Interlochen Corners for the anticipated safety, traffic and aesthetic improvements.

Sidewalk Addition: Connections at Interlochen Corners made from Tom's to Kozy Court and new Hudson Development.

Poor Soil Removal: Poor soil identified near Tonawanda and Cedar Hedge Creek bridges leading to excessive road settlement.



Construction - 2025

Local Detour Route Improvements (Summer 2025):

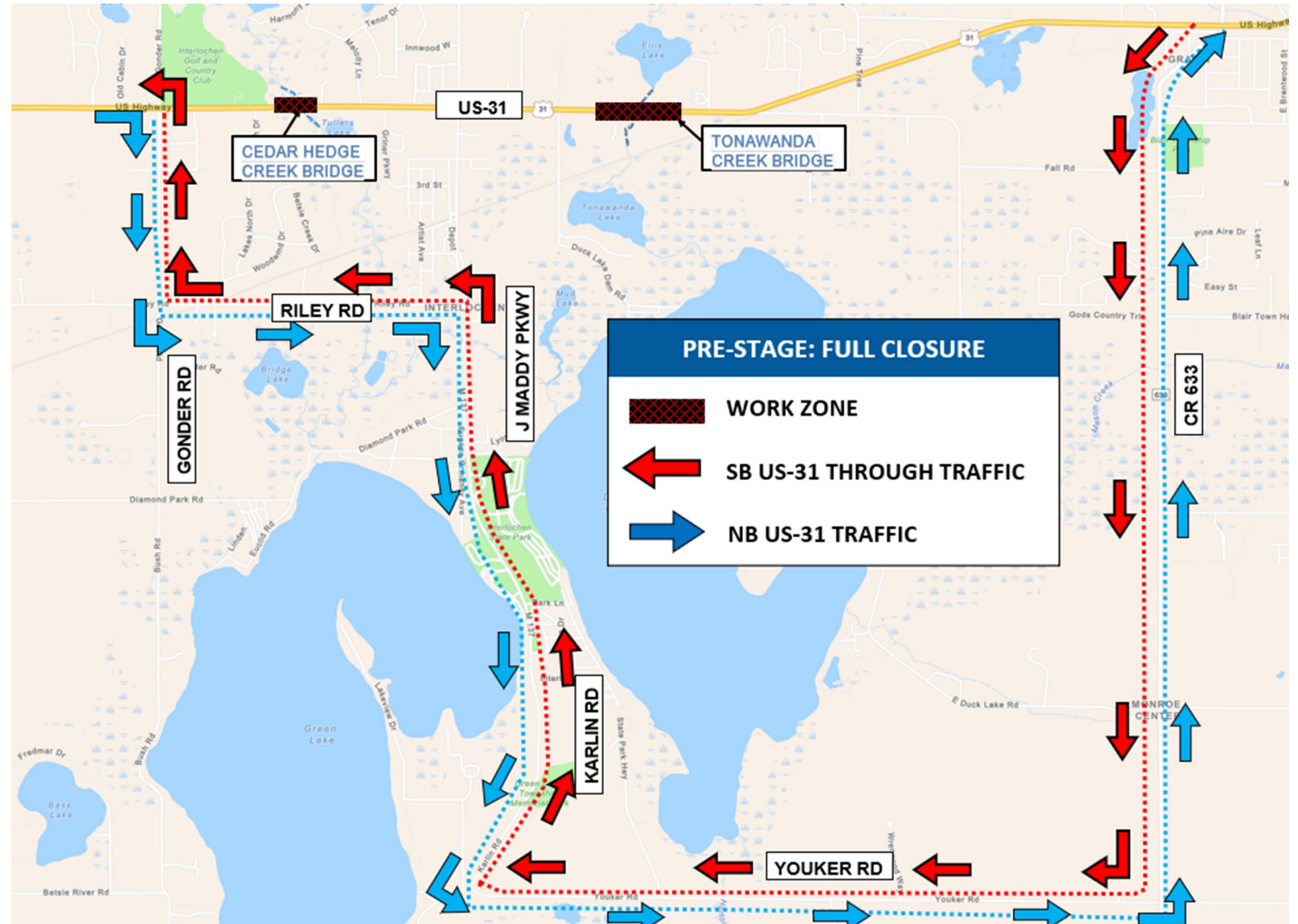
Investment will go to Grand Traverse and Benzie County routes rather than be removed after construction.

Poor Soil Removal (Fall 2025):

- Removal will require closing US-31 with a detour for both northbound and southbound US-31 as shown here.
- See MOT boards for improvements to accommodate US-31 traffic.

Paving US-31 Shoulder (Fall 2025):

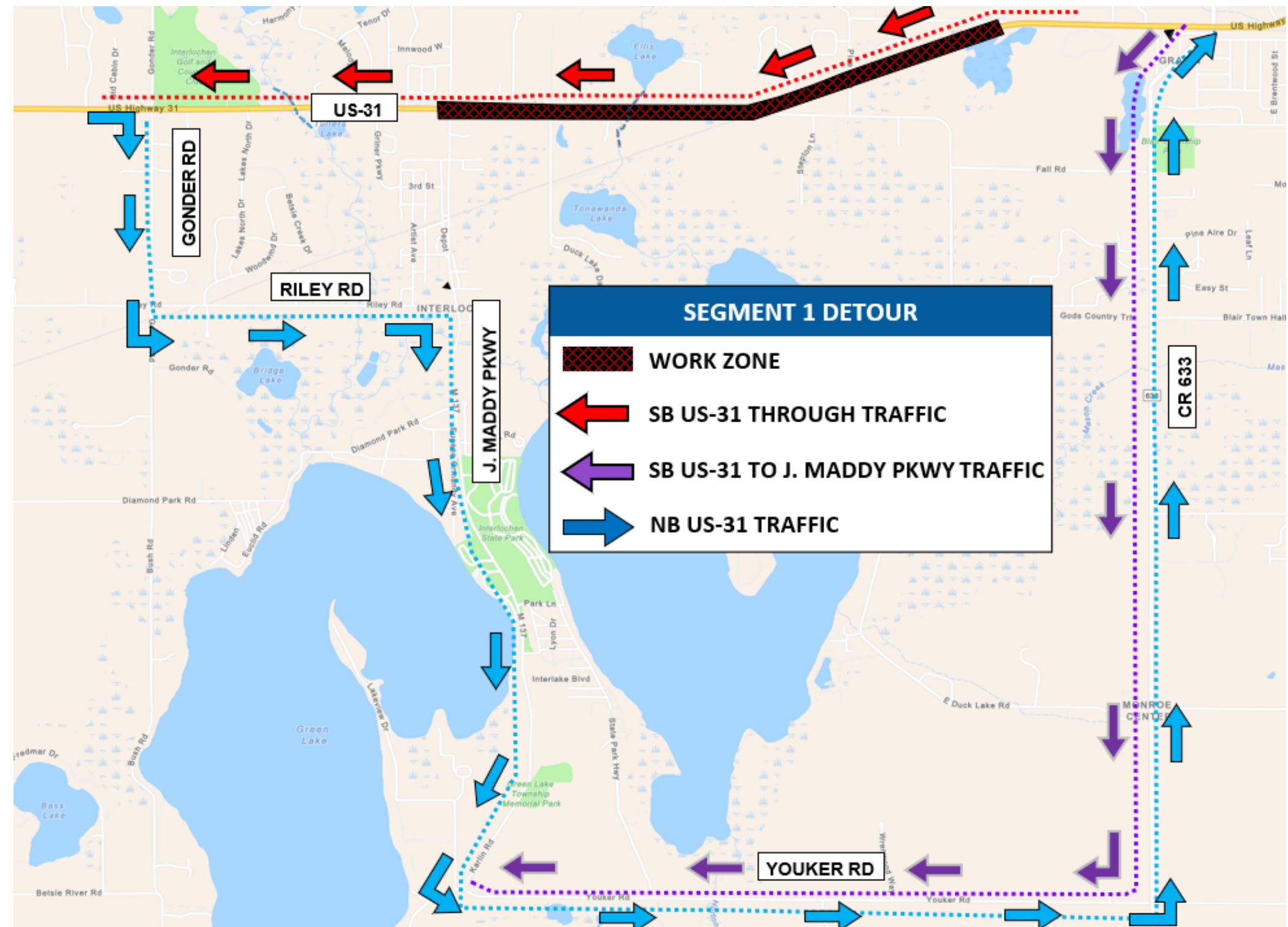
Done to maintain traffic for the first phase of reconstruction.



Segment 1 Construction – Early 2026

Construction from Sullivan Road past S. Long Lake Road:

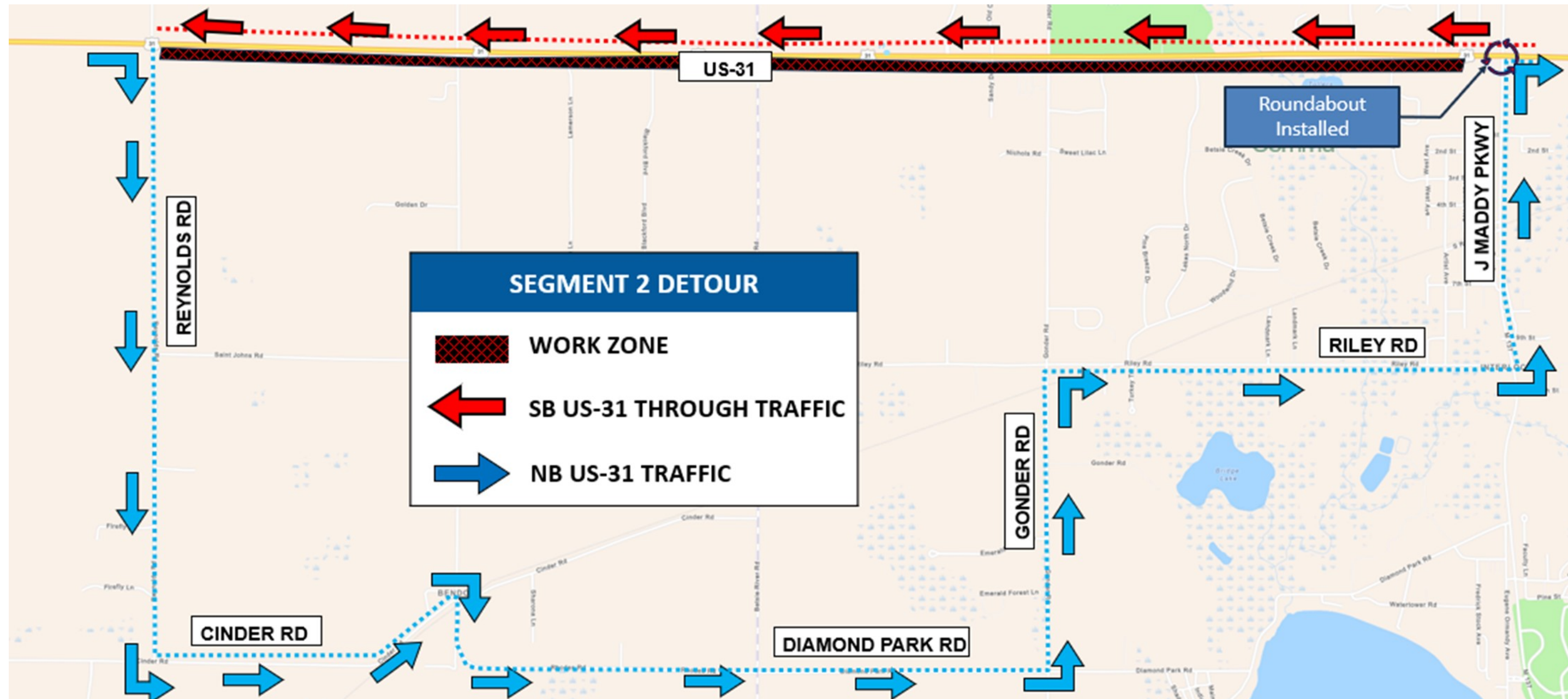
- Two phased construction (southbound US-31 and then northbound US-31).
- Southbound US-31 maintained traffic switches sides.
- Includes roundabout construction.



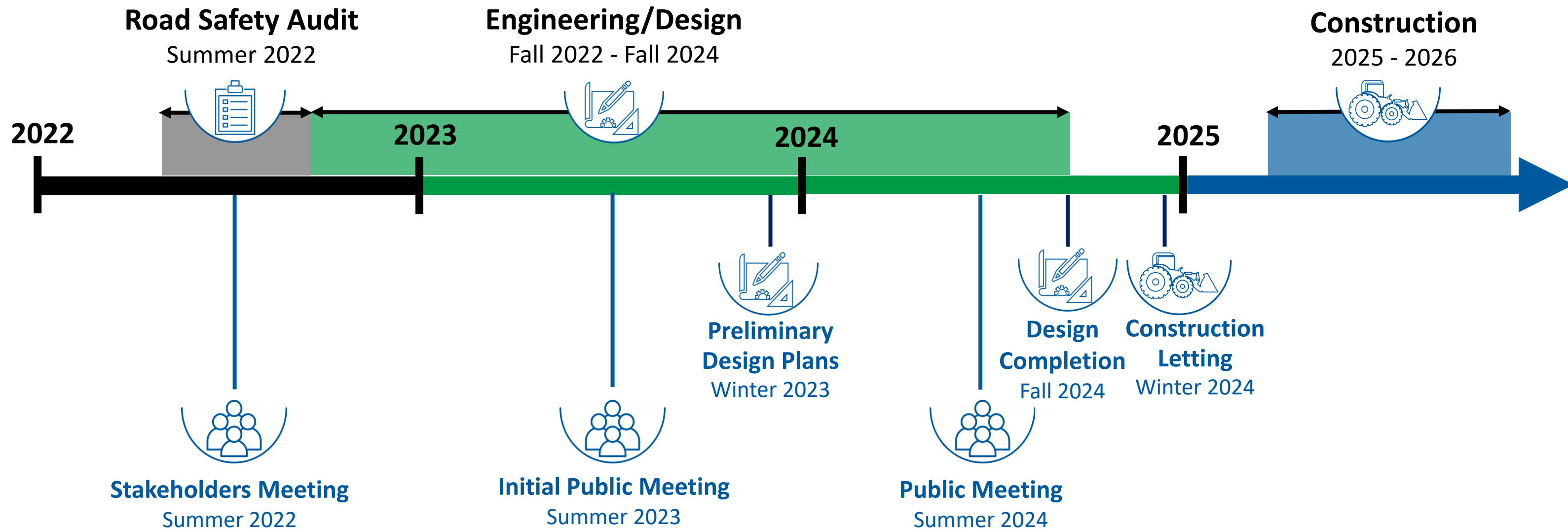
Segment 2 Construction – Late 2026

Construction from S. Long Lake Road past Reynolds Road:

- Two-phased construction (northbound US-31 and then southbound US-31).
- Southbound US-31 maintained traffic switches sides.



Schedule





Open House

The public comment period is open.

Our team is available to meet one-on-one to address individual questions.



Scan for Project Website and
Link to Online Comment Form



Lucas Porath, P.E.
MDOT Traverse City TSC
PorathL@Michigan.gov
231-941-1986