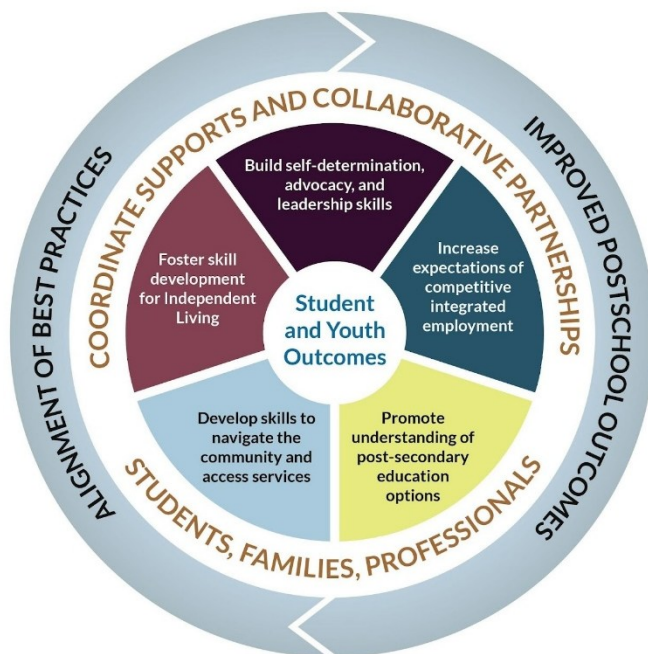


The Michigan Interagency Transition Team (MITT) is comprised of representatives from 21 agencies that contribute to the transition to adulthood for youth with disabilities. MITT members meet online once a month to work toward annual goals and to update each other on transition-related events and activities around the state. All of MITT's discussions and projects are based on the MITT model for secondary transition:



Summary of recent work:

September 2024: MITT's booklet, "A Guide to Transition from Special Education into Adulthood" is published online. Currently available on the websites for The Arc of Michigan, Michigan Alliance for Families, MSU STRIDE, and Children's Special Health Care Services. The booklet is written in plain language for a target audience of families and self-advocates.

October 2024: MITT's Strategic Planning process is started with support from the National Technical Assistance Center on Transition (NTACT-C). The strategic plan is based upon the Interagency Agreement signed by directors of MDE, MRS, and BSBP in October 2024.

November 2024 – June 2025: As part of the strategic plan, MITT develops professional training based upon the Interagency Agreement, to be presented at regional conferences (such as MCEC and MTSA). MITT is also gathering contact information for ISD transition coordinators, training tools and checklists to be shared later in 2025 at regional conferences and local meetings. "A Guide to Transition from Special Education into Adulthood" is one of the materials for the training, to assist local professionals in educating families about connecting with transition services and adult services.

Request

Please assist MITT in disseminating "A Guide to Transition from Special Education into Adulthood" to self-advocates, families, and professionals, as widely as possible, using these links:

arcmi.org/wp-content/uploads/sites/1/2024/10/Family-Transition-Guide-2024.pdf

stride.msu.edu/statewide-resources/mitt

www.michiganallianceforfamilies.org/wp-content/uploads/2024/10/MITT-Transition-Guide-24.pdf