



Michigan Flu Focus

Weekly Influenza Surveillance Report



Editor: Sue Kim, MPH

Editor Email: KimS2@michigan.gov

April 26, 2019

Vol. 16; No.29

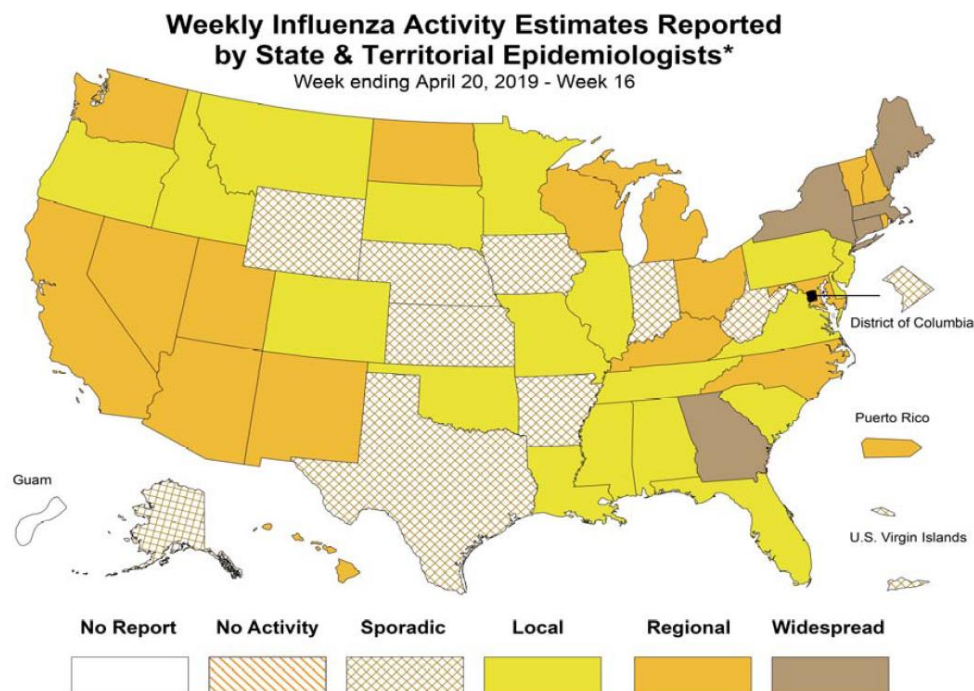
Week Ending April 20, 2019 | WEEK 16

Michigan Influenza Activity
No Activity
Sporadic
Local
Regional
Widespread

*Clicking on the current activity level will direct you to the CDC webpage defining each activity level for the geographic spread of influenza

Updates of Interest

CDC – For Week 16, the CDC has reported national ILI activity at 2.1%, which is below the national baseline of 2.2%. This is the first week ILI activity was below the baseline since mid-November 2018. Please see the following link to CDC’s recent FluView report for more details:
 Link: <https://www.cdc.gov/flu/weekly>



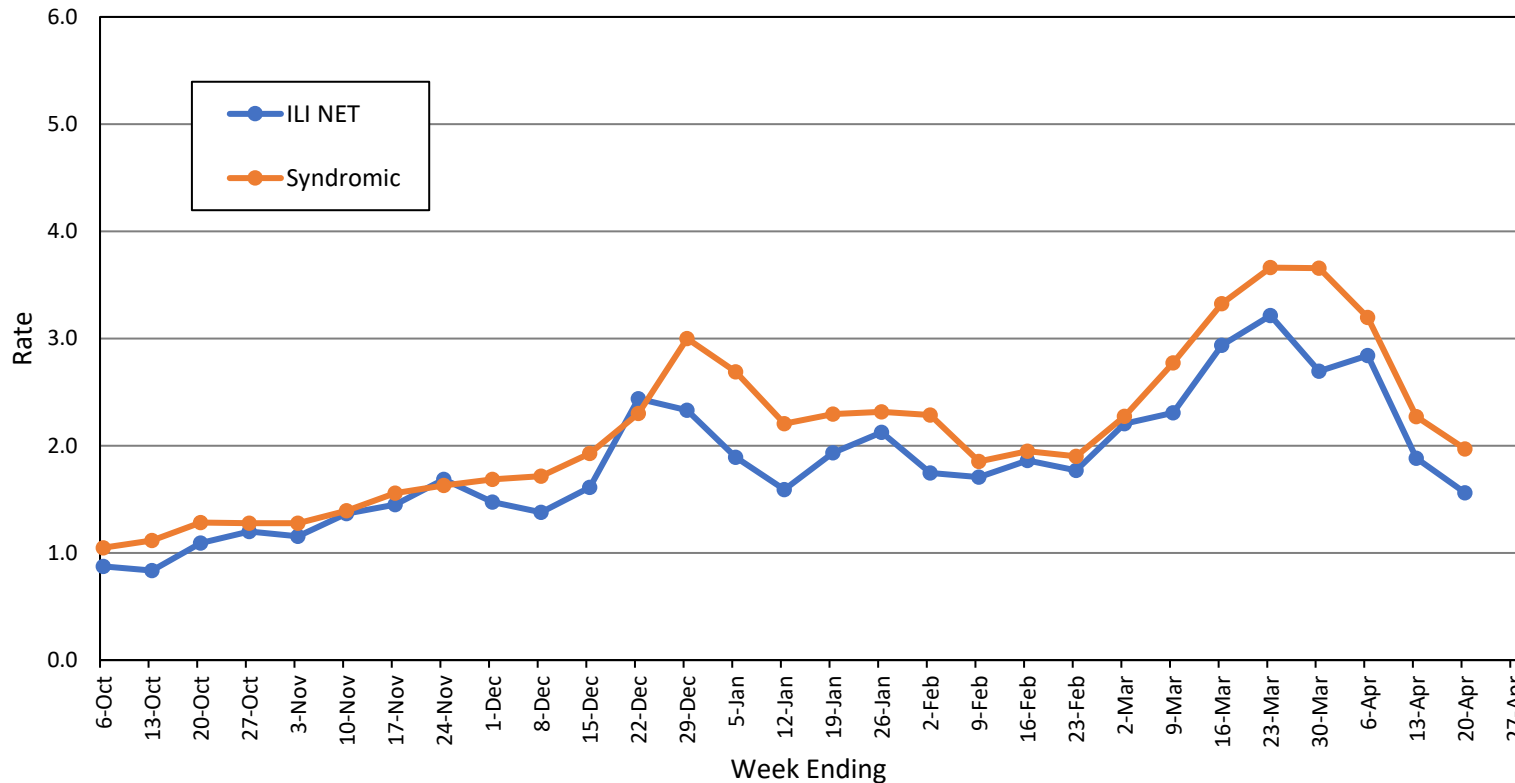
Source: CDC FluView

Influenza-associated Pediatric Mortality
 One (1) pediatric influenza (A/H1N1-09) death has been confirmed by MDHHS for the 2018-2019 flu season. Nationally, 96 influenza-associated pediatric deaths have been reported thus far for the 2018-2019 flu season.

- Number of reports by region: 37 total [C(12), N(3), SE(15), SW(7)]
- Proportion of visits due to ILI: ↓ 1.6% (regional baseline*: 1.8%)
- A total of 221 patient visits due to ILI were reported out of 14,169 office visits

*Regional baseline is developed by calculating the mean percentage of patient visits for ILI during non-influenza weeks for the previous three seasons and adding two standard deviations.

MI Statewide ILI NET and Syndromic Surveillance Rates, 2018-2019



National Surveillance

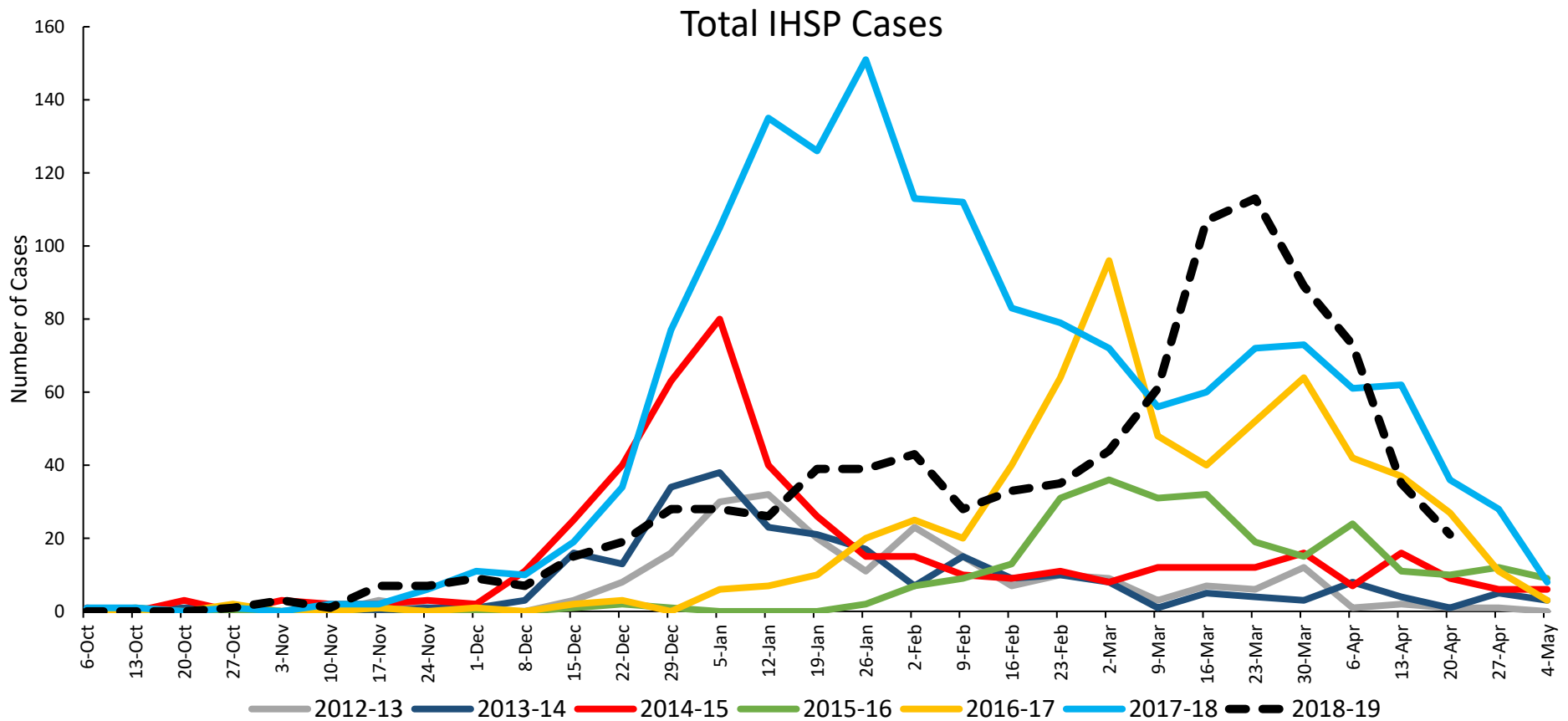
In the United States, 2.1% of outpatient visits were due to influenza-like illness (ILI), which is below the national baseline of 2.2%.

Become a sentinel provider!

Contact Shelly Doeblner at DoeblerM@michigan.gov

Influenza Hospitalization Surveillance Project

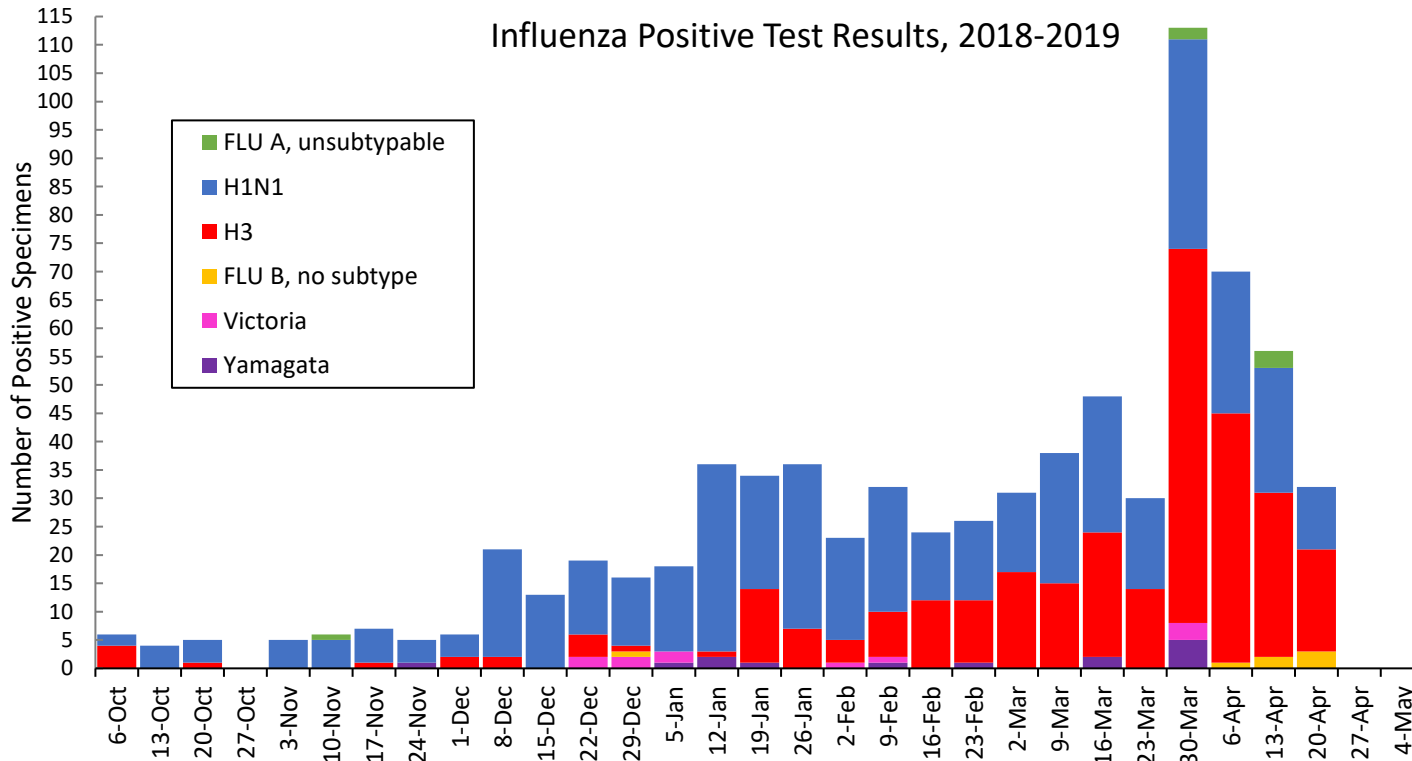
The CDC Influenza Hospitalization Surveillance Project (IHSP) provides population-based rates of hospitalization due to severe influenza-related illness through active surveillance and chart review of lab-confirmed cases from Oct. 1, 2018 until Apr. 30, 2019, for Clinton, Eaton, Ingham, Genesee, and Washtenaw counties. Since Oct. 1, there have been **911 (117 pediatric, 794 adult)** influenza-related hospitalizations reported in the catchment area for the 2018-2019 season.



Washtenaw County was added in 2017-2018

MDHHS Bureau of Laboratories reported 100 new positive influenza results (57C, 1N, 5SE, 37SW)

Respiratory Virus	# Positive Respiratory Virus Results by Region				Overall Total	2017-18 Total
	C	N	SE	SW		
2009 A/H1N1pdm	203	23	54	145	425	80
Influenza A/H3	145	12	18	113	288	579
Influenza B	2	11	11	6	30	220
Total	350	46	83	264	743	879



Based on STARLIMS MDHHS BOL Testing Portal

Note: Flu B subtyping will be reported based on MDHHS BOL testing runs (roughly each month) and will be backtracked into this graph

Most recent MDHHS BOL Flu B subtyping run: **April 4, 2019**

Michigan Sentinel Clinical Lab Respiratory Virus Data

Twelve (12) sentinel clinical labs (2SE, 2SW, 7C, 1N) reported during this week

SE Region

- Influenza A: moderate; decreasing
- Influenza B: low-moderate; decreasing
- Parainfluenza: slightly elevated
- RSV: low
- Adenovirus: low
- hMPV: slightly elevated

Central Region

- Influenza A: low-moderate; decreasing
- Influenza B: low-slightly elevated
- Parainfluenza: low
- RSV: low
- Adenovirus: sporadic-low
- hMPV: low-slightly elevated

SW Region

- Influenza A: moderate; decreasing
- Influenza B: low
- Parainfluenza: low-slightly elevated
- RSV: low
- Adenovirus: low
- hMPV: low-slightly elevated

North Region

- Influenza A: low-slightly elevated
- Influenza B: low
- Parainfluenza: no data available
- RSV: sporadic
- Adenovirus: no data available
- hMPV: no data available

There were 3 new respiratory viral outbreaks (1C, 0N, 2SE, 0SW) reported to MDHHS during this time period. Respiratory outbreaks for the 2018-2019 season are listed in the table below.

Facility Type	C	N	SE	SW	Total	2016-2017 Total	2017-2018 Total
Schools: K-12 & College	3	2	3	1	9	25	14
Long-term Care / Assisted Living Facility	17	4	20	13	54	138	238
Healthcare Facility	1	0	0	0	1	23	4
Daycare	0	0	0	0	0	3	4
Homeless Shelter	0	0	1	0	1	1	0
Correctional Facility	2	4	0	1	7	2	10
Other	0	0	0	0	0	3	0
Total	23	10	24	15	72	195	270

Did you know?

Congregate setting outbreaks of viral respiratory illnesses are required to be reported to your local health department? See:

- [Influenza Guidance for Healthcare Providers](#)
- [Guideline for influenza and Respiratory Virus Outbreaks in Long-Term Care Facilities](#)

FluBytes

- [WHO Recommendation Made for H3N2 Virus Vaccine Strain](#)
- [NIH Begins First Human Trials of Potential Universal Flu Vaccine](#)
- [10 Years After the H1N1 Flu Pandemic](#)
- [Increasing Influenza Vaccination in Health Care Workers](#)
- [Flu Vaccine Tied to Lower Mortality in Heart Failure Patients](#)
- [Flu Activity Surveillance Update](#)

MDHHS Contributors

Bureau of Epidemiology and Population Health – S. Bidol, MPH, S. Kim, MPH

Bureau of Family Health Services – M. Doebler, MPH

Bureau of Labs – B. Robeson, MT, V. Vavricka, MS

For questions or to be added to the distribution list, please contact Sue Kim at KimS2@michigan.gov