



MI Flu Focus

Influenza Surveillance Updates

Bureaus of Epidemiology and Laboratories



Editor: Jalyn Ingalls, MA

IngallsJ@michigan.gov

November 30, 2017

Vol. 15; No. 6

Influenza Surveillance Report for the Week Ending November 18, 2017

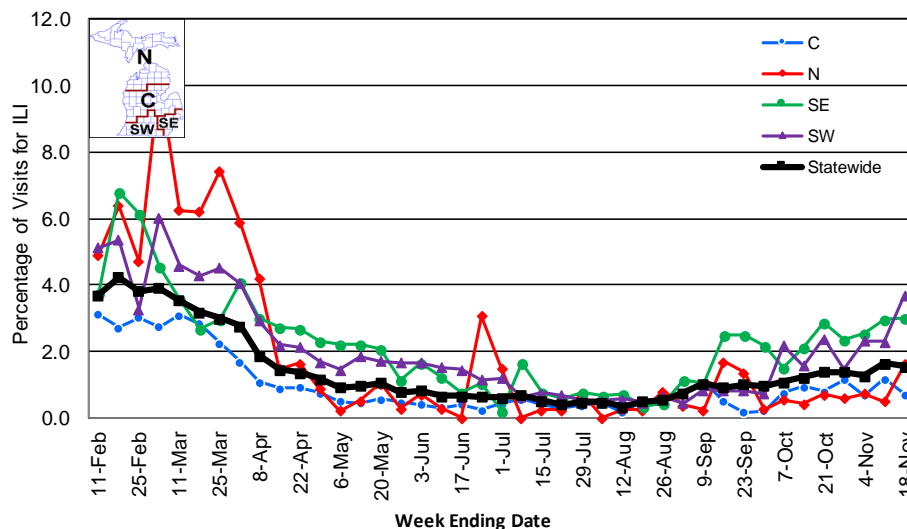
MI's Influenza Activity Level:
Sporadic

Updates of Interest: One human infection with a novel influenza A virus was reported from Iowa during week 46. This person was infected with an influenza A(H1N1) variant (H1N1v) virus and reported direct, prolonged contact with swine in the week preceding illness onset. For more information, see: <https://www.cdc.gov/flu/weekly/>.

Sentinel Provider Surveillance

The proportion of visits due to influenza-like illness (ILI) decreased to 1.6% overall, which is below the regional baseline of 1.8%. A total of 339 patient visits due to ILI were reported out of 21,859 office visits. Please note: These rates may change as additional reports are received.

Percentage of Visits for Influenza-like Illness (ILI) Reported by Sentinel Providers, Statewide and Regions 2016-17 and 2017-18 Flu Seasons

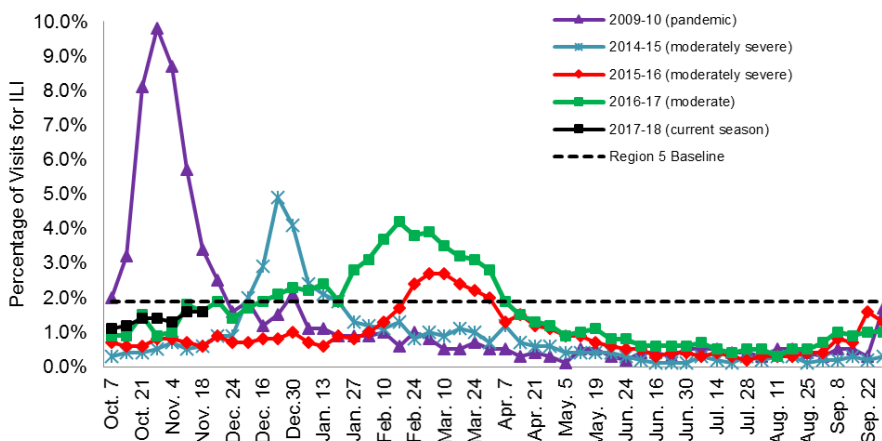


Number of Reports by Region (74 total):

- C (47)
- N (3)
- SE (15)
- SW (8)

National Surveillance: In the United States, 2.0% of outpatient visits were due to influenza-like illness, which is below the national baseline of 2.2%.

Percentage of Visits for Influenza-like Illness (ILI) Reported by the US Outpatient Influenza-like Illness Surveillance Network (ILINet): Michigan, Select Seasons



Become a Sentinel Provider! As part of pandemic influenza surveillance, CDC and MDHHS highly encourage year-round participation from all sentinel providers. New practices are encouraged to join the sentinel surveillance program today! Contact Jalyn Ingalls (IngallsJ@michigan.gov) for more information.

Additional information is in the weekly FluView reports available at: www.cdc.gov/flu/weekly.

Influenza-associated Pediatric Mortality

No pediatric deaths have been reported to MDHHS during the 2017-2018 flu season. Nationally, 5 influenza-associated pediatric deaths have been reported thus far for the 2017-2018 flu season.

Hospital Surveillance

The CDC Influenza Hospitalization Surveillance Project provides population-based rates of hospitalization due to severe influenza-related illness through active surveillance and chart review of lab-confirmed cases from Oct. 1, 2017 until Apr. 30, 2018, for Clinton, Eaton, Ingham, Genesee, and Washtenaw counties. Since Oct. 1, there has been **1 pediatric and 5 adult** influenza-related hospitalizations reported in the catchment area for the 2017-2018 season. Note: Cumulative totals may change from week to week as cases are reviewed to determine if they meet the case definition.

The MDHHS Influenza Sentinel Hospital Network monitors influenza-related admissions reported voluntarily by hospitals statewide, with 6 facilities (N, C, SE & SW) reporting during this time period. Results for the 2017-18 flu season are listed in the table below. Additional hospitals are encouraged to join; please contact Seth Eckel at eckels1@michigan.gov.

Age Group	New Flu Hospitalizations Reported	Total 2017-18 Flu Hospitalizations Reported to Date
0-4 years	0	0
5-17 years	0	1 (N)
18-49 years	1 (SE)	2 (SE)
50-64 years	4 (3N, 1SE)	5 (3N, 2SE)
65 years & older	0	7 (4N, 3SE)
Total	5 (3N, 2SE)	15 (8N, 7SE)

Laboratory Surveillance

MDHHS Bureau of Laboratories reported 6 new positive influenza results (5 A/H3 and 1 flu B) during this time period. A total of 48 positive influenza results have been reported for the 2017-18 season. Influenza results for the 2017-18 season are in the table below.

Respiratory Virus	# Positive Respiratory Virus Results by Region				Total	# Specimens Antigenically Characterized	# Tested for Antiviral Resistance
	C	N	SE	SW			# Resistant / Total # Tested
2009 A/H1N1pdm			2		2		
Influenza A/H3	10	4	24	3	41		
Influenza B		1	4		5		
A / unsubtypeable							
LAIV recovery							

In addition, 10 sentinel clinical labs (2SE, 2SW, 6C, 0N) reported influenza testing results. Six (6) labs (SE, SW, C) reported sporadic influenza A activity. One (1) lab (SE) reported sporadic influenza B activity. Three labs (SE, SW, C) reported low or slightly increasing Parainfluenza activity. Six (6) labs (SE, C) reported low or slightly increased RSV activity. Three (3) labs (SE, SW, C) reported sporadic or low Adenovirus activity. No labs reported hMPV activity. Testing volumes remain in the low to moderate range with most sites continuing to slowly trend upwards.

Congregate Setting Outbreaks of Viral Respiratory Illness

There was 1 new respiratory outbreak reported to MDHHS during this time period. Respiratory facility outbreaks for the 2017-2018 season are listed in the table below.

Facility Type	C	N	SE	SW	Total
K-12 School	2				2
Long-term Care / Assisted Living Facility	1	1	1		3
Healthcare Facility					
Daycare	1				1
Homeless Shelter					
Total	4	1	1		6