



Michigan Flu Focus

Weekly Influenza Surveillance Report

March 28, 2025

Vol. 22; No. 25

Week Ending March 22, 2025 | WEEK 12

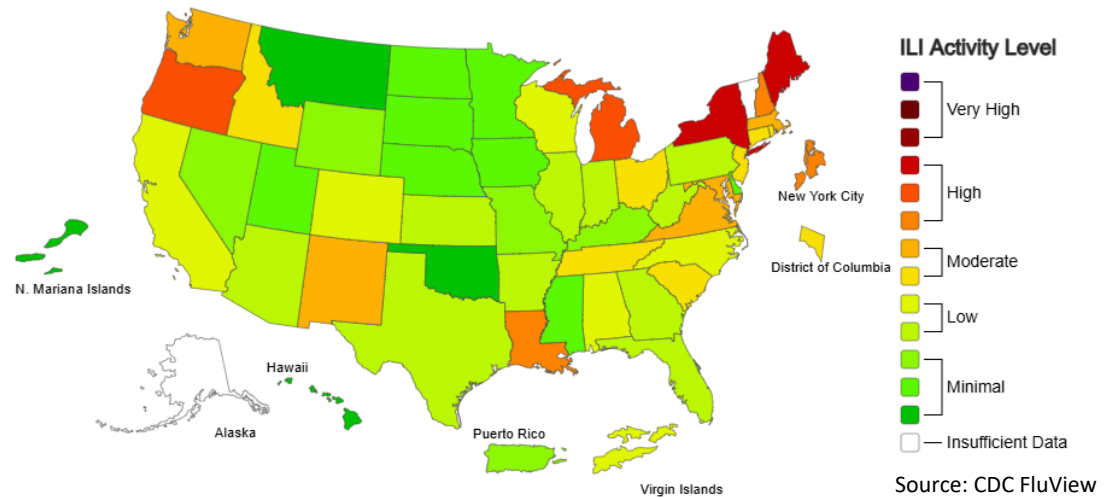
Editor: Sue Kim, MPH

Data provided in this report are preliminary and will be updated as additional data are received

Outpatient Respiratory Illness Activity Map Determined by Data Reported to ILINet

This system monitors visits for respiratory illness that includes fever plus a cough or sore throat, also referred to as ILI, not laboratory confirmed influenza and may capture patient visits due to other respiratory pathogens that cause similar symptoms.

2024-25 Influenza Season Week 12 ending Mar 22, 2025



Note: This map represents U.S. ILI activity levels reported to ILINet. The display used in past seasons showing Geographic spread of influenza has been suspended for the 2024-2025 influenza season

Updates of Interest

On March 13th, 2025, the U.S. Food and Drug Administration (FDA) made recommendations to vaccine manufacturers for the virus strains to be used in influenza (flu) vaccines for the 2025-2026 U.S. flu season following a thorough and comprehensive review of U.S. and global surveillance data. FDA does not anticipate any impact on timing or availability of vaccines for the American public.

For more information, please see FDA's [full report](#).

Seasonal Flu Vaccination Coverage

Michigan's goal is to vaccinate **4 million** residents during the 2024-2025 flu season.

As of **March 22, 2025, 2,779,531** Michiganders have received a flu vaccine (**72.6%** towards goal) for the 2024-2025 season.

For more info, please visit the [Michigan Respiratory Virus Dashboard](#)

Influenza-associated Pediatric Mortality

Nationally, **159** influenza-associated pediatric deaths have been reported for the 2024-2025 flu season.

Six (6) influenza-associated pediatric deaths in Michigan have been confirmed by MDHHS for the 2024-2025 flu season.

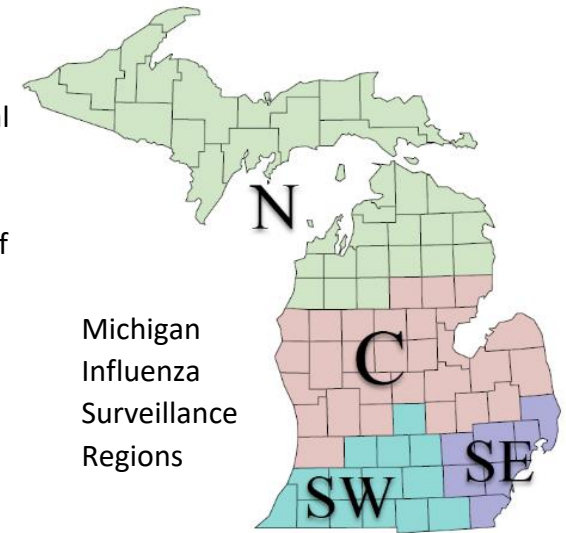
U.S. Outpatient Influenza-like Illness Surveillance Network (ILINet)

Michigan participates in ILINet, a collaborative effort between the CDC, state and local health departments, and volunteer sentinel clinicians as part of Michigan’s influenza surveillance. ILINet provides data on the total number of outpatient visits to health care providers seen for any reason and the number of those patients with influenza-like illness (ILI[‡]). Participating Michigan emergency department and urgent care facilities send syndromic data voluntarily in near real-time to the Electronic Surveillance System for the Early Notification of Community Based Epidemics (ESSENCE). Discharge diagnosis and chief complaint data elements are used to determine whether visits meet the ILI case definition. Two hundred and thirty-one (231) Michigan facilities contributing data to ESSENCE have been validated and enrolled in ILINet.

[‡]ILI is defined as fever (>100°F) and a cough and/or a sore throat.

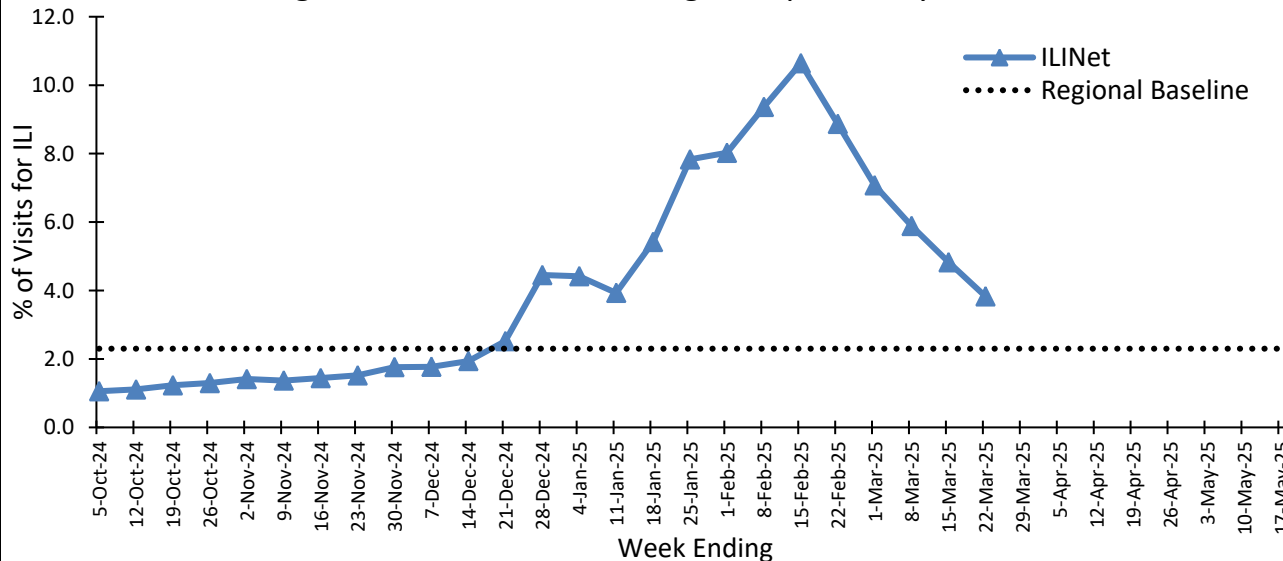
Number of Reports and ILI % by Region during this time period:

	C	N	SE	SW
# of Reporters (294)	113	32	114	35
ILI %	3.0	6.0	4.6	3.6



Michigan Influenza Surveillance Regions

Percentage of Visits for ILI in Michigan Reported by ILINet, 2024-2025



Note: ILINet monitors visits for ILI (fever and cough and/or sore throat) and may capture patient visits due to other respiratory pathogens that cause similar symptoms.

Michigan ILI Activity: 3.8% ↓

(Last week: 4.8%)

Regional Baseline*: 2.3%

A total of **5,731** patient visits due to ILI were reported out of **149,712** outpatient visits.

*Regional baseline is determined by calculating the mean percentage of patient visits due to ILI during non-influenza weeks for the previous three seasons and adding two standard deviations.

National Surveillance

In the United States, **3.3%** of outpatient visits were due to ILI (Last week: **3.9%**)

This is **above** the national baseline of 3.0%

Become an ILINET provider!

Contact Arianna Eaton at eatona4@michigan.gov

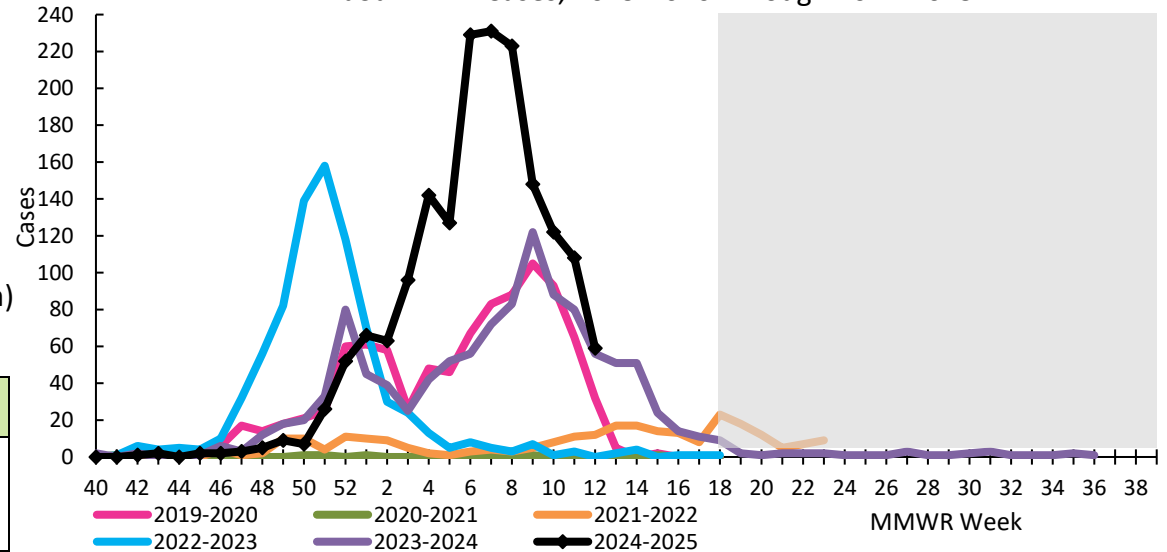
Influenza Hospitalization Surveillance Network (FluSurv-NET)

The CDC's Influenza Hospitalization Surveillance Network (FluSurv-NET) provides population-based rates of laboratory-confirmed influenza-associated hospitalizations from October 1st through April 30th each year. Michigan participates for Clinton, Eaton, Genesee, Ingham, and Washtenaw Counties. (Livingston County will be piloted during the 2024-2025 season)

of MI FSN cases reported for the 2024-2025 season:

	Pediatric	Adult	Total
Week 12 (Change from Previous Week)	6 (-3)	53 (-46)	59 (-49)
Cumulative Cases	176	1,547	1,723

MI FluSurv-NET Cases, 2019-2020 Through 2024-2025



Note: FSN was extended during the 2021-2022 season to Week 23 due to late season activity in 2022 and extended during the 2023-2024 season in response to the HPAI outbreak among dairy cattle
 Note: Livingston County was added as a pilot site for the 2024-2025 season

Influenza Sentinel Hospital Network (ISHN)

[ISHN](#) is a group of hospitals in Michigan that voluntarily report weekly aggregate counts of influenza hospitalizations by age group.

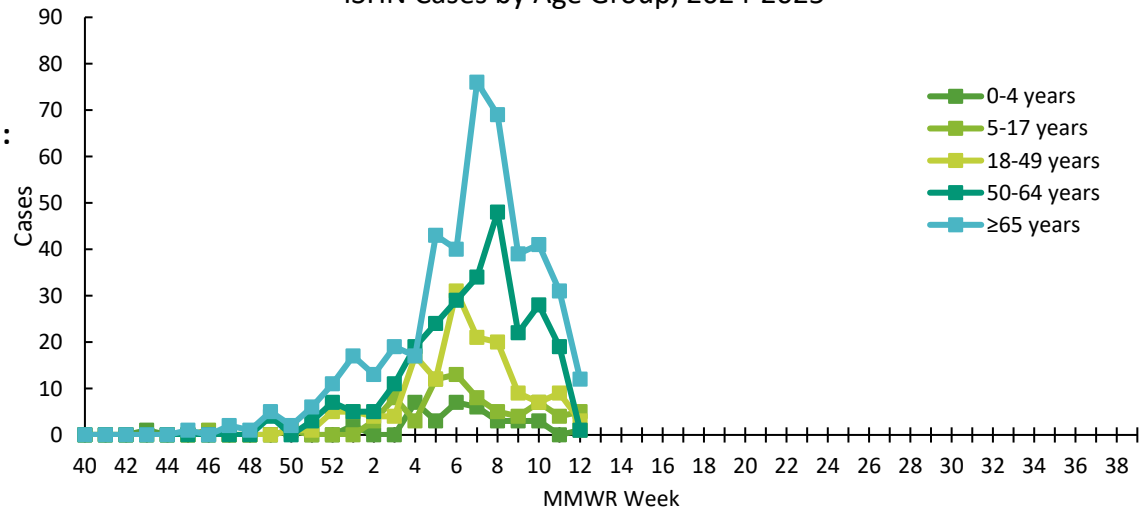
of Sites & Hospitalizations by Region during this time period:

Region	C	N	SE	SW	Total
Reporting Sites	4	1	0	1	6
Hospitalizations	9	5	0	8	22

Total # of Reported Hospitalizations for ISHN by Region:

Age Group	C	N	SE	SW	Total
0-4	0	0	0	37	37
5-17	0	0	0	74	74
18-49	18	6	0	125	149
50-64	72	24	0	163	259
65+	136	47	0	262	445
Total	226	77	0	661	964

ISHN Cases by Age Group, 2024-2025



If you'd like to join ISHN, please contact
 Val Tellez Nunez at telleznunezv@michigan.gov

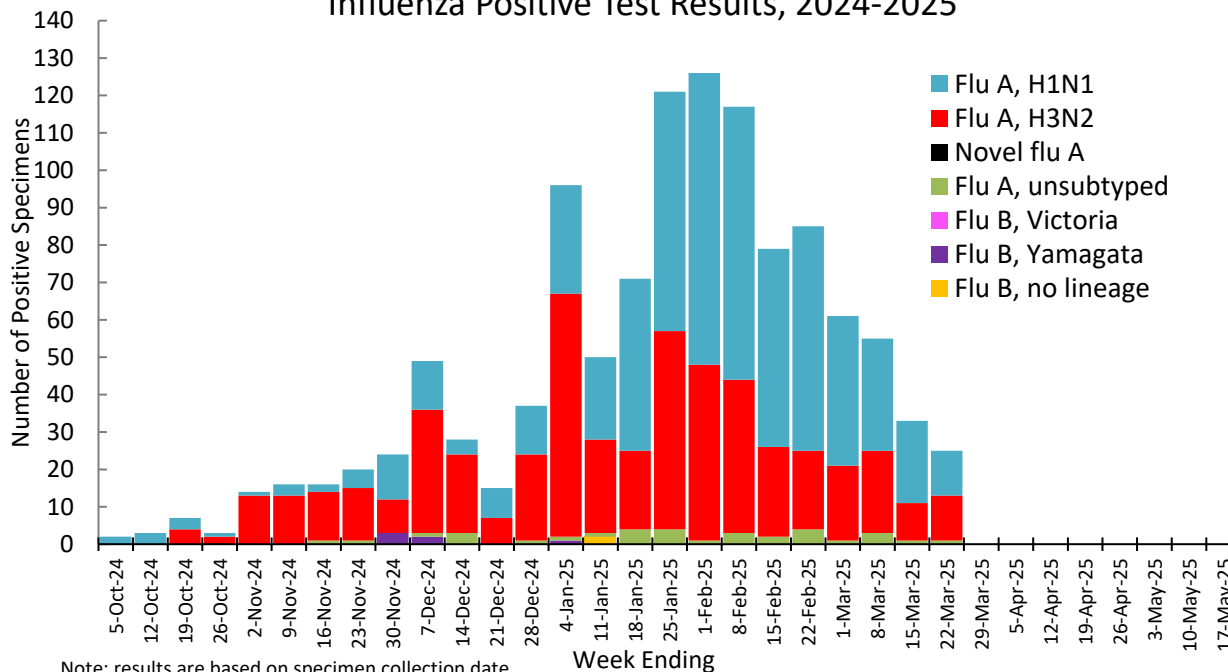
MDHHS Bureau of Laboratories (BOL) Virology Laboratory Data

There were **25** (9C, 2N, 6SE, 8SW) positive influenza results reported by the MDHHS Bureau of Laboratories (BOL) during this time period. Positive flu results for the 2024-2025 season are summarized below.

of Positive Influenza Virus Results by Region

	C	N	SE	SW	Total
Flu A H1N1	110	39	199	251	599
Flu A H3N2	125	9	191	188	513
Novel flu A*	0	0	0	0	0
Flu A unsubtype	6	1	8	18	33
Flu B Victoria	2	0	3	1	6
Flu B Yamagata	0	0	0	0	0
Flu B no lineage	0	0	2	0	2
Total	243	49	403	458	1,153

Influenza Positive Test Results, 2024-2025



Note: results are based on specimen collection date
 Novel influenza A result include: H5, H1N1v, H1N2v, H7N2v, H1v, H3v

Michigan Sentinel Clinical Lab Network Respiratory Virus Data

Six (6) sentinel clinical labs (1SE, 1SW, 3C, 1N) reported for the week ending 3/22/2025.

Southeast Region		
Influenza A:	Moderate ↓	↑ = Increase from previous week
Influenza B:	Low ↑	
SARS-CoV-2:	Low - elevated ↓	↓ = Decrease from previous week
Parainfluenza:	Low ↑	
RSV:	Low - moderate ↓	→ = Similar to previous week
Adenovirus:	Low ↓	
hMPV:	Low - slightly elevated ↑	
Central Region		
Influenza A:	Moderate ↓	
Influenza B:	Elevated ↑	
SARS-CoV-2:	Low - slightly elevated ↑	
Parainfluenza:	Low ↑	
RSV:	Elevated - moderate ↓	
Adenovirus:	Low ↑	
hMPV:	Low ↑	
Southwest Region		
Influenza A:	Slightly Elevated ↓	
Influenza B:	Low - elevated ↑	
SARS-CoV-2:	Low - slightly elevated ↓	
Parainfluenza:	Sporadic →	
RSV:	Low - elevated ↓	
Adenovirus:	No activity ↓	
hMPV:	Sporadic ↓	
North Region		
Influenza A:	Low ↓	
Influenza B:	No activity →	
SARS-CoV-2:	Low ↑	
Parainfluenza:	No activity →	
RSV:	Low ↓	
Adenovirus:	Sporadic ↑	
hMPV:	Sporadic ↓	

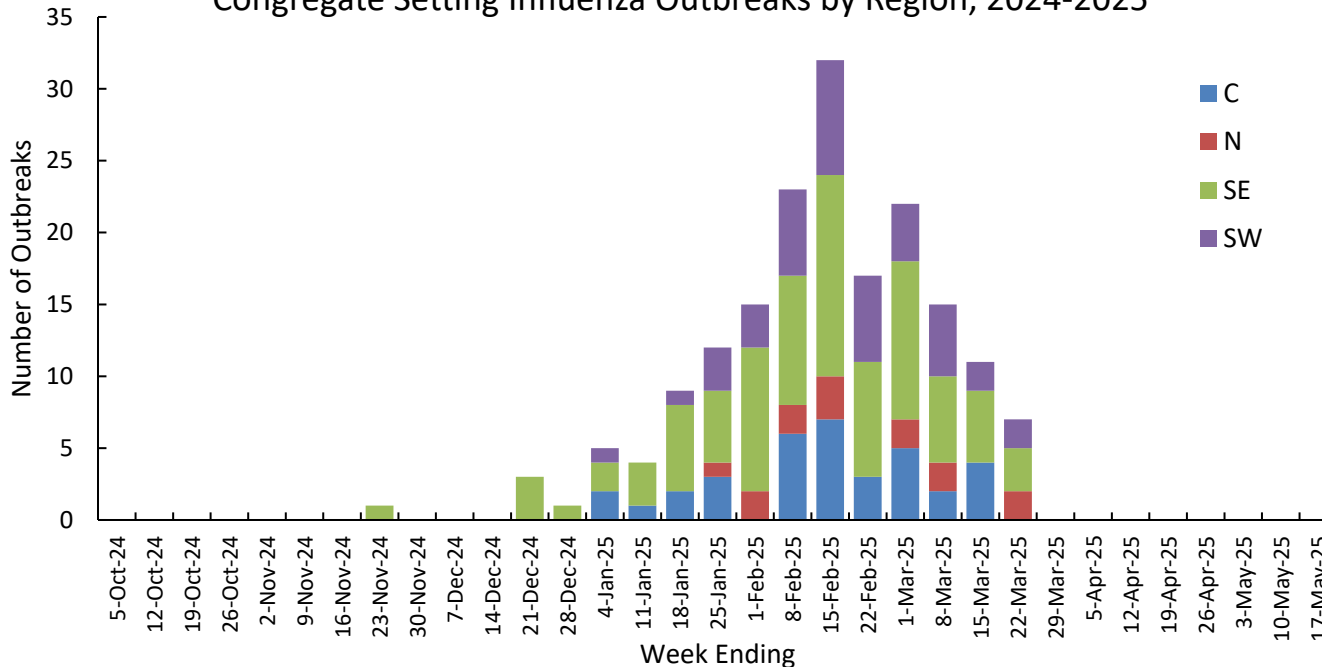
There were 7 (0C, 2N, 3SE, 2SW) confirmed influenza outbreaks reported to MDHHS during this time period. Influenza outbreaks for the 2024-2025 season are summarized below.

of Reported Influenza Outbreaks by Region

Facility Type	C	N	SE	SW	Total
Schools: K-12 & College	0	0	19	4	23
Long-term Care / Assisted Living Facility	33	13	57	30	133
Healthcare Facility	1	1	1	4	7
Daycare	1	0	4	1	6
Homeless Shelter	0	0	1	0	1
Correctional Facility	0	0	2	1	3
Other	0	0	3	1	4
Total	35	14	87	41	177

Note: Data are reported on outbreaks with laboratory confirmed influenza. Other non-influenza, non-COVID outbreaks, and ILI outbreaks without confirmatory influenza testing will not be reported in the table and graph.

Congregate Setting Influenza Outbreaks by Region, 2024-2025



Did you know?

Congregate setting outbreaks of viral respiratory illness are required to be reported to your local health department? See:

- Influenza Guidance for [Local Health Departments \(LHDs\)](#), [Healthcare Providers](#), and [Laboratories](#)

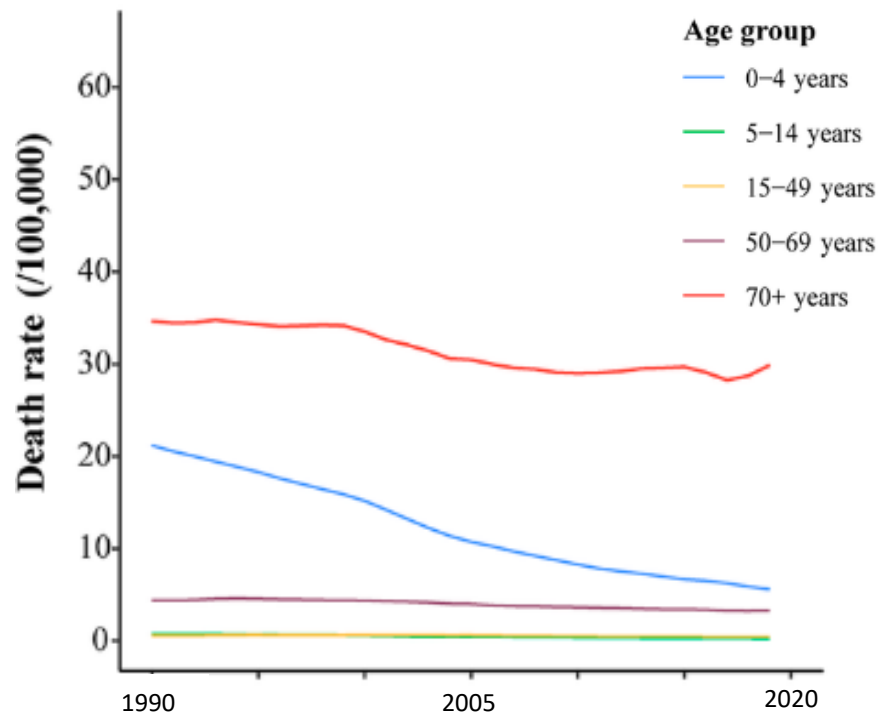
Outbreak Response Resources:

- [MDHHS Guidelines for Influenza and Respiratory Virus Outbreaks in Long-Term Care Facilities](#)
- [MDHHS Respiratory Virus Outbreaks in Nursing Homes Flow Diagram](#)
- [MDHHS Respiratory Illness Outbreak Response Tool for use in Skilled Nursing Facilities](#)
- [CDC Viral Respiratory Pathogens Toolkit for Nursing Homes](#)

For information on COVID-19 outbreaks, please visit the [Michigan Respiratory Virus Dashboard](#)

Analysis of global flu death rates reveals overall decline but spikes in certain groups (CIDRAP)

Age-specific temporal trends of influenza-associated lower respiratory infections globally from 1990 to 2019 (Chen et al., 2025)



Influenza News Blast

- [Officials confirm new case of bird flu in Ingham County backyard poultry \(Huron Daily Tribune\)](#)
- [A Detroit's guide to bird flu \(Outlier Media\)](#)
- [Surge of dead birds on South Haven beaches, DNR urges caution \(News Channel 3\)](#)
- [Bird flu reinfections at US poultry farms highlight need for vaccines \(The Guardian\)](#)
- [Cambodia reports third fatal human H5N1 case of the year \(CIDRAP\)](#)
- [I Wish I Had Known How Much the Flu Sucks When You're Pregnant \(What to Expect\)](#)
- [What the World's First Case of Bird Flu in Sheep Means for the Virus's Spread \(SciAm\)](#)
- [A year later, cow flu origins are an unsettling puzzle \(Science\)](#)
- [Vaccine fatigue is causing people to skip recommended shots \(WI Public Radio\)](#)

Additional Resources

- [MDHHS Respiratory Virus Dashboard](#)
- [MDHHS Influenza Webpage](#)
- [MDHHS Bureau of Laboratories \(BOL\) Flu Webpage](#) and [Test Request Forms](#)
- [Immunization Action Coalition: Ask the Experts - Flu](#)
- [National Wastewater Surveillance System \(CDC\)](#)
- [CDC FluView](#)
- [Vaccine finder \(vaccines.gov\)](#)

View Michigan Flu Focus Report archives [here](#).

2024-2025 Influenza Season Preliminary Burden Estimates

The Centers for Disease Control and Prevention (CDC) have released [preliminary in-season burden estimates](#) for the 2024-2025 flu season.

Since October 1, 2024, CDC estimates that there have been between:

44 million – 76 million flu illnesses

20 million – 34 million flu medical visits

580,000 – 1.2 million flu hospitalizations

25,000 – 120,000 flu deaths

Updated March 28, 2025

MDHHS Contributors

Bureau of Infectious Disease Prevention: A. Eaton, MPH, L. Leegwater, MPH, L. Reeg, MPH, S. Kim, MPH, V. Tellez Nunez, MPH

Bureau of Laboratories: K. Margulieux, PhD, V. Vavricka, MS