

Action Team: **Traffic Safety Engineering**

Report for Period: **2008/2009**

---

**Please describe activities and accomplishments that took place for each strategy/objective listed in your action plan.**

## GENERAL

- ❖ LTAP/MTU offered a course in December called:  
***"What Elected Officials Need to Know About Traffic Safety"***  
It was offered statewide at 4 locations and 168 people attended.

## Intersection

### Washtenaw County Road Commission:

- ❖ Installed new traffic signals at five intersections
- ❖ Installed overhead flashing beacons at two un-signalized intersections
- ❖ Upgraded one intersection to a box span configuration
- ❖ Use of Top 5% Report which allowed them to cover their PE costs (10% of construction costs)

### MDOT-Bay Region

- ❖ Completed 16 signal modernizations, which all include box spans
- ❖ Completed three intersection safety projects.
- ❖ Completed a project to put in three pedestrian safety islands.
- ❖ Completed a review of all our NO TURN ON RED signs in the region.
- ❖ Completed two signal optimization projects, which included M-15 in Genesee County (15 signals), M-53 in Lapeer County (7 signals).
- ❖ Started another signal optimization project which includes retiming 80 signals in Bay, Clare, Gladwin and Isabella counties. 12 were retimed in 2008.

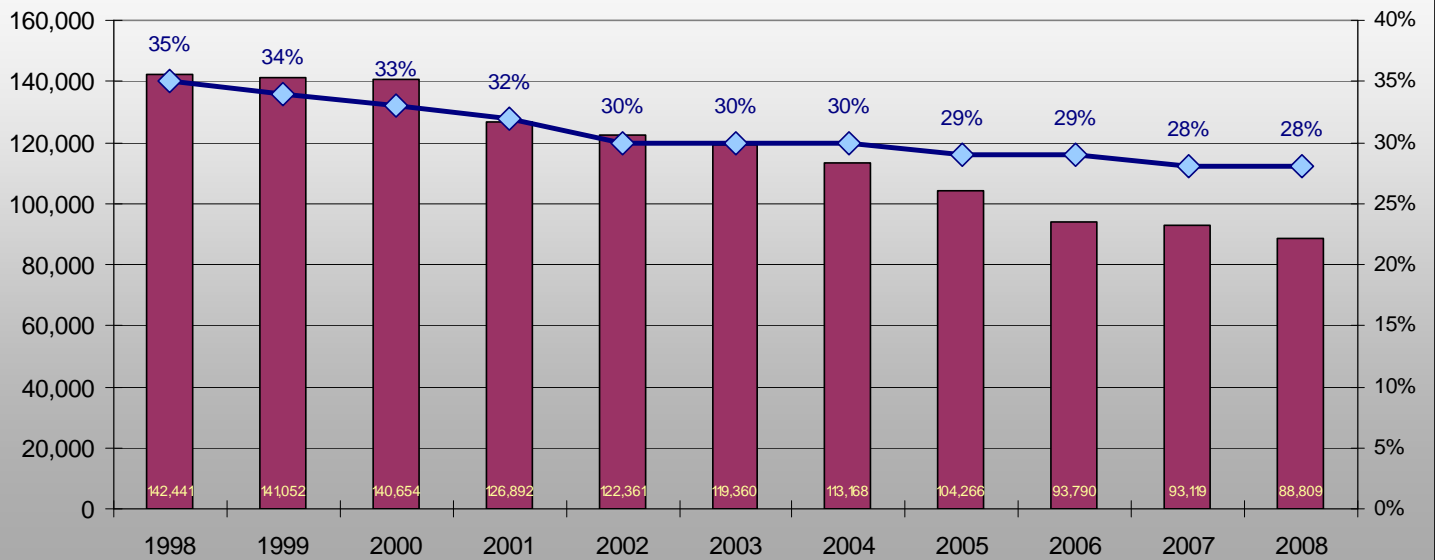
### Research

- ❖ OR09083-Evaluating Performance and Effectiveness of Roundabouts  
Proposal Due Date: 05/26/09. Posted: 04/16/09
- ❖ OR09098-Educating the Public to Negotiate Roundabouts  
Proposal Due Date: 05/26/09. Posted: 04/16/09.



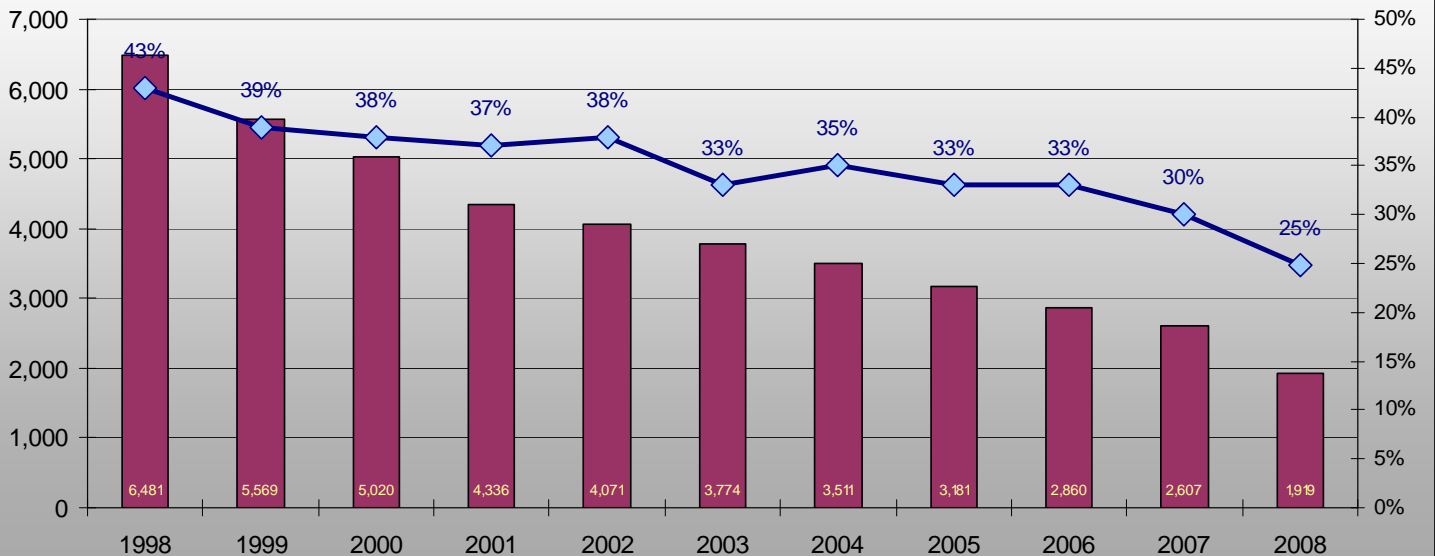
## 1998-2008 Intersection Crashes

Intersection Crashes    % of Intersection Crashes to Total Crashes



## 1998-2008 Intersection Fatalities + A Injuries

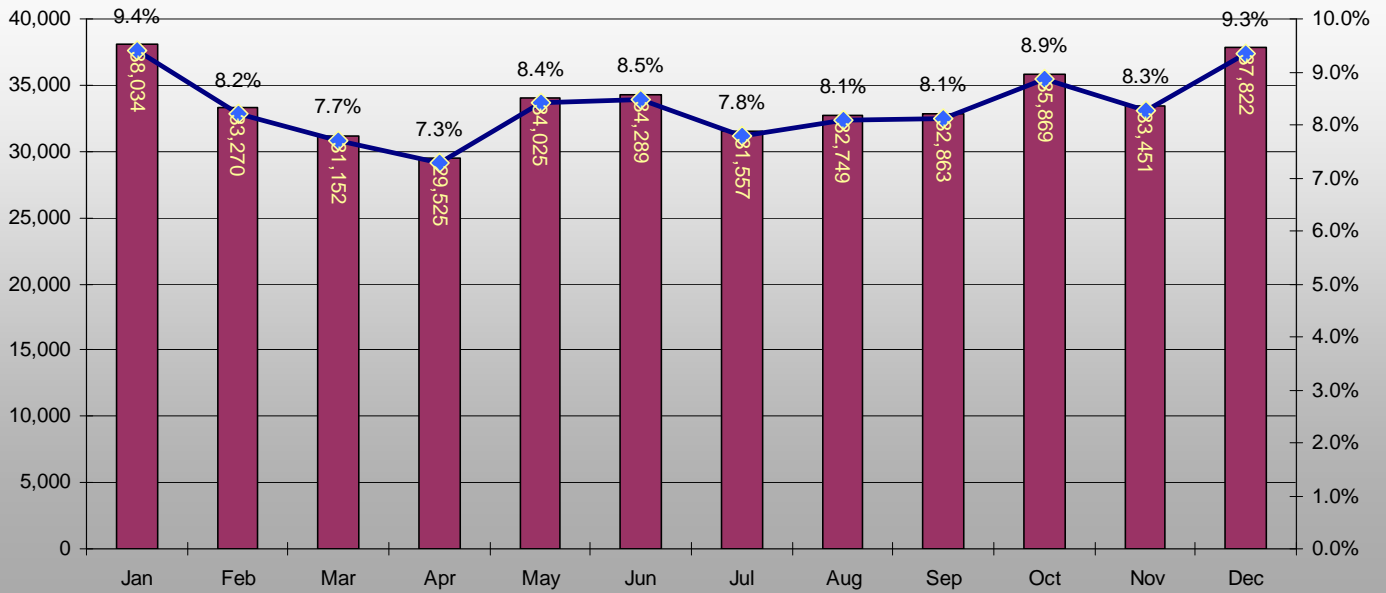
KA Intersection Injuries    % of KA Intersection Injuries to Total KA Injuries





### 2004-2008 Intersection Related Crashes x MONTH

Fatals % of Intersection Related Fatal Crashes x Month



### 2004-2008 Intersection KA Crashes x MONTH

Fatals % of Intersection Related Fatal Crashes x Month

