

GENERAL DESIGN GUIDELINES FOR R.O.W. VICINITY SHEET - USE ONLY ON PROJECTS IF R.O.W. IS TO BE REQUIRED. THIS SHEET MAY BE PREPARED IN COOPERATION WITH THE REAL ESTATE DIVISION.

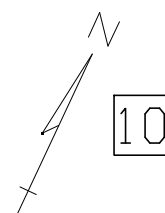
- 1 IF AT ALL POSSIBLE, USE A SCALE THAT WILL ALLOW THE ENTIRE JOB TO BE PLACED ON 1 VICINITY MAP SHEET, BUT STILL BE LEGIBLE. DO NOT USE ANY SCALE GREATER THAN 1" = 300', BUT USE A MINIMUM SCALE OF 1"=100', SPLIT SHEETS ARE ACCEPTABLE.
- 2 CONSULTANT LOGO APPEARS HERE. (TYPICAL ON ALL SHEETS).
- 3 SHOW EXCESS PROPERTY AVAILABLE TO CONTRACTORS FOR POSSIBLE STORAGE AREAS. RESTORE AS PER EARTH CHANGE PLAN.
- 4 SECTION NUMBERS AND LINES
- 5 TOWNSHIP & RANGE DESIGNATIONS
- 6 CITY LIMITS IF APPLICABLE
- 7 PARCEL NUMBERS - FOR MARKED FINAL ROW PLANS ONLY. PARCEL NUMBERS ARE NOT REQUIRED ON CONSTRUCTION PLANS.
- 8 ALIGNMENT CENTERLINES
- 9 EX & PROPOSED R.O.W.
- 10 NORTH ARROW
- 11 SECTION CORNERS, 1/4 CORNERS
- 12 SUBDIVISIONS/PLATS
- 13 ENLARGE THE SIZE OF THE STATION TEXT AT EVERY 10TH STATION, EX 270, 280, 290 ETC.

NOTE:
DRAINAGE AND R.O.W. VICINITY SHEETS MAY BE COMBINED, ON A PER PROJECT BASIS

ROW VICINITY SHEET

FINAL R.O.W.			
AUTH	DATE	NO.	REVISION

AVAILABLE CONTRACTOR STORAGE AREA #1 -
 THE CONTRACTOR MAY USE THIS STORAGE AREA AS A CONTRACTOR STORAGE/BORROW
 AND BATCH PLANT YARD FOR THE PROJECT. THIS AREA SHALL BE RESTORED TO AN
 APPROVED EARTH CHANGE PLAN.



10

5 SW 1/4 SECT. 36
 T28N, R11W
 PENINSULA TWP.

11 CENTER SECT. 36

531

WAKULAT PANAMA-
 VIEW ESTATES

7

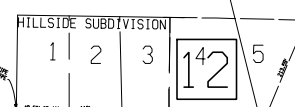
530

STA 83+22.88 M-37=
 STA 100+00.00 PORT MISSION RD

STA 100+32.38
 PORT MISSION RD

PROP LIMITED
 ACCESS ROW

STA 72+17.71 M-37



142

529

7

E 1/4 COR
 SECT. 36

LOCATION
 SW COR
 SECT. 36

SECTION LINE
 CITY LIMITS OF
 TRAVERSE CITY

STA 45+78.02 M-37=
 STA 100+00.00 SHERIDAN RD

STA 50+48.07 M-37=
 STA 100+00.00 MISSION RD

STA 55+11.18 M-37=
 STA 100+00.00 TEMPER RD

521

N02°02'54"E

ALPINE TRAILS
 SUBDIVISION

SE 1/4 SECT. 36
 T28N, R11W
 PENINSULA TWP

5

4 6

N88°02'26"W
 2632.16'

11

S 1/4 CORNER OF
 SECTION 36

PENINSULA DRIVE TERRACE 12

NW 1/4 SECT. 1
 T27N, R11W
 GARFIELD TWP.

8 9

GOVT. LOT 1
 GOVT. LOT 2

516

514

COLLEGE HEIGHTS
 SUBD.

508

EASTERN AVE
 SE COR GOVT. LOT 1
 NE COR GOVT. LOT 2

S88°13'02"E
 2652.13'

2483.12'
 N02°02'54"E

10' MIN

3

13

4

7

530

7

E 1/4 COR
 SECT. 36

LOCATION
 SW COR
 SECT. 36

SECTION LINE
 CITY LIMITS OF
 TRAVERSE CITY

STA 45+78.02 M-37=
 STA 100+00.00 SHERIDAN RD

STA 50+48.07 M-37=
 STA 100+00.00 MISSION RD

STA 55+11.18 M-37=
 STA 100+00.00 TEMPER RD

521

N02°02'54"E

ALPINE TRAILS
 SUBDIVISION

SE 1/4 SECT. 36
 T28N, R11W
 PENINSULA TWP

5

4 6

N88°02'26"W
 2632.16'

11

S 1/4 CORNER OF
 SECTION 36

PENINSULA DRIVE TERRACE 12

NW 1/4 SECT. 1
 T27N, R11W
 GARFIELD TWP.

8 9

GOVT. LOT 1
 GOVT. LOT 2

516

514

COLLEGE HEIGHTS
 SUBD.

508

EASTERN AVE
 SE COR GOVT. LOT 1
 NE COR GOVT. LOT 2

S88°13'02"E
 2652.13'

2483.12'
 N02°02'54"E

10' MIN

3

13

4

7

530

7

E 1/4 COR
 SECT. 36

LOCATION
 SW COR
 SECT. 36

SECTION LINE
 CITY LIMITS OF
 TRAVERSE CITY

STA 45+78.02 M-37=
 STA 100+00.00 SHERIDAN RD

STA 50+48.07 M-37=
 STA 100+00.00 MISSION RD

STA 55+11.18 M-37=
 STA 100+00.00 TEMPER RD

521

N02°02'54"E

ALPINE TRAILS
 SUBDIVISION

SE 1/4 SECT. 36
 T28N, R11W
 PENINSULA TWP

5

4 6

N88°02'26"W
 2632.16'

11

S 1/4 CORNER OF
 SECTION 36

PENINSULA DRIVE TERRACE 12

NW 1/4 SECT. 1
 T27N, R11W
 GARFIELD TWP.

8 9

GOVT. LOT 1
 GOVT. LOT 2

516

514

COLLEGE HEIGHTS
 SUBD.

508

EASTERN AVE
 SE COR GOVT. LOT 1
 NE COR GOVT. LOT 2

S88°13'02"E
 2652.13'

2483.12'
 N02°02'54"E

10' MIN

3

13

4

7

530

7

E 1/4 COR
 SECT. 36

LOCATION
 SW COR
 SECT. 36

SECTION LINE
 CITY LIMITS OF
 TRAVERSE CITY

STA 45+78.02 M-37=
 STA 100+00.00 SHERIDAN RD

STA 50+48.07 M-37=
 STA 100+00.00 MISSION RD

STA 55+11.18 M-37=
 STA 100+00.00 TEMPER RD

521

N02°02'54"E

ALPINE TRAILS
 SUBDIVISION

SE 1/4 SECT. 36
 T28N, R11W
 PENINSULA TWP

5

4 6

N88°02'26"W
 2632.16'

11

S 1/4 CORNER OF
 SECTION 36

PENINSULA DRIVE TERRACE 12

NW 1/4 SECT. 1
 T27N, R11W
 GARFIELD TWP.

8 9

GOVT. LOT 1
 GOVT. LOT 2

516

514

COLLEGE HEIGHTS
 SUBD.

508

EASTERN AVE
 SE COR GOVT. LOT 1
 NE COR GOVT. LOT 2

S88°13'02"E
 2652.13'

2483.12'
 N02°02'54"E

10' MIN

3

13

4

7

530

7

E 1/4 COR
 SECT. 36

LOCATION
 SW COR
 SECT. 36

SECTION LINE
 CITY LIMITS OF
 TRAVERSE CITY

STA 45+78.02 M-37=
 STA 100+00.00 SHERIDAN RD

STA 50+48.07 M-37=
 STA 100+00.00 MISSION RD

STA 55+11.18 M-37=
 STA 100+00.00 TEMPER RD

521

N02°02'54"E

ALPINE TRAILS
 SUBDIVISION

SE 1/4 SECT. 36
 T28N, R11W
 PENINSULA TWP

5

4 6

N88°02'26"W
 2632.16'

11

S 1/4 CORNER OF
 SECTION 36

PENINSULA DRIVE TERRACE 12

NW 1/4 SECT. 1
 T27N, R11W
 GARFIELD TWP.

8 9

GOVT. LOT 1
 GOVT. LOT 2

516

514

COLLEGE HEIGHTS
 SUBD.

508

EASTERN AVE
 SE COR GOVT. LOT 1
 NE COR GOVT. LOT 2

S88°13'02"E
 2652.13'

2483.12'
 N02°02'54"E

10' MIN

3

13

4

7

530

7

E 1/4 COR
 SECT. 36

LOCATION
 SW COR
 SECT. 36

SECTION LINE
 CITY LIMITS OF
 TRAVERSE CITY

STA 45+78.02 M-37=
 STA 100+00.00 SHERIDAN RD

STA 50+48.07 M-37=
 STA 100+00.00 MISSION RD

STA 55+11.18 M-37=
 STA 100+00.00 TEMPER RD

521

N02°02'54"E

ALPINE TRAILS
 SUBDIVISION

SE 1/4 SECT. 36
 T28N, R11W
 PENINSULA TWP

5

4 6

N88°02'26"W
 2632.16'

11

S 1/4 CORNER OF
 SECTION 36

PENINSULA DRIVE TERRACE 12

NW 1/4 SECT. 1
 T27N, R11W
 GARFIELD TWP.

8 9

GOVT. LOT 1
 GOVT. LOT 2

516

514

COLLEGE HEIGHTS
 SUBD.

508

EASTERN AVE
 SE COR GOVT. LOT 1
 NE COR GOVT. LOT 2

S88°13'02"E
 2652.13'

2483.12'
 N02°02'54"E

10' MIN

3

13

4

7

530

7

E 1/4 COR
 SECT. 36

LOCATION
 SW COR
 SECT. 36

SECTION LINE
 CITY LIMITS OF
 TRAVERSE CITY

STA 45+78.02 M-37=
 STA 100+00.00 SHERIDAN RD

STA 50+48.07 M-37=
 STA 100+00.00 MISSION RD

STA 55+11.18 M-37=
 STA 100+00.00 TEMPER RD

521

N02°02'54"E

ALPINE TRAILS
 SUBDIVISION

SE 1/4 SECT. 36
 T28N, R11W
 PENINSULA TWP

5

4 6

N88°02'26"W
 2632.16'

11

S 1/4 CORNER OF
 SECTION 36

PENINSULA DRIVE TERRACE 12

NW 1/4 SECT. 1
 T27N, R11W
 GARFIELD TWP.

8 9

GOVT. LOT 1
 GOVT. LOT 2

516

514

COLLEGE HEIGHTS
 SUBD.

508

EASTERN AVE
 SE COR GOVT. LOT 1
 NE COR GOVT. LOT 2

S88°13'02"E
 2652.13'

2483.12'
 N02°02'54"E

10' MIN

3

13

4

7