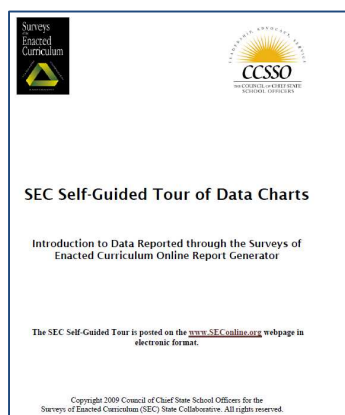


## 7 Review the Surveys of Enacted Curriculum Data *Insert for Process Step 7*

It is highly recommended that all schools complete the Surveys of Enacted Curriculum (SEC). It is currently required that all Priority schools complete the SEC. Title 1 Focus Schools may use their set aside monies to purchase the SEC. The SEC are a set of data collection tools being used with teachers of various subject areas to collect and report consistent data on current instructional practices and content being taught in classrooms. The results, which are reported online, provide an objective method for educators to analyze the degree of alignment between current instruction and state standards (including CCSS) and assessments. The results also allow teachers to compare their practice and instructional content to responses by other teachers within their school and district and around the country.

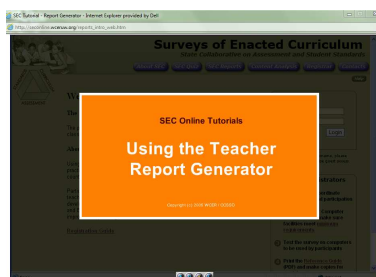
If you have completed the SEC, then you will have your login information and be able to access the various reports at <http://seconline.wceruw.org/secwebhome.htm>. If you have not completed the SEC yet and need information, see the Resources section of this module for contact information.

Resources for Reviewing and Analyzing the SEC Reports are available on the SEC website.



### SEC Self-Guided Tour of Data Charts

<http://seconline.wceruw.org/Reference/SECSelfGuide09.pdf>



### Using the Teacher Report Generator

[http://seconline.wceruw.org/reports\\_intro\\_web.htm](http://seconline.wceruw.org/reports_intro_web.htm)



### SEC Introduction Video

[http://seconline.wceruw.org/Reference/sec\\_tutorial.html](http://seconline.wceruw.org/Reference/sec_tutorial.html)