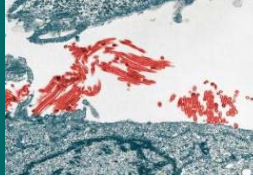


# FLUBYTES



September 24, 2009

Michigan Department of Community Health, 201 Townsend Street, Lansing, MI 48913  
For additional flu information visit: [www.michigan.gov/flu](http://www.michigan.gov/flu)

## Seasonal Influenza

### SEASONAL VACCINE SUPPLY UPDATE

According to CDC's FluFinder tracking system, approximately 60 million doses of flu vaccine have been distributed as of September 18, 2009. This is just under 50% of the total anticipated supply for the season.

The estimated seasonal flu vaccine production is somewhat reduced (114-115 million doses) from the estimates made in July 2009, but not substantially changed (approximately 3%). Three manufacturers - sanofi Pasteur, GSK, and Novartis - have prepared communication statements for customers. These messages are attached.

Michigan has posted [information for consumers and healthcare providers](#) who are asking for information on where to find flu vaccine.

### RECENT NEWS

#### [Hospital requiring employees to get flu vaccine](#)

On September 24<sup>th</sup>, the New England Journal of Medicine published the [article](#), "Comparative Efficacy of Inactivated and Live Attenuated Influenza Vaccines" by Monto AS, Ohmit SE, Petrie JG, et al.

## 2009 Influenza A H1N1

### MDCH GUIDANCE ON THE 2009 H1N1 VACCINATION PROGRAM

On September 15, 2009, MDCH [posted](#) a one-page summary of 2009 H1N1 vaccine storage and handling procedures.

Visit the clinician information section of [MDCH's 2009 H1N1 influenza website](#) for the latest information on **Provider Enrollment in the Influenza A (H1N1) 2009 Monovalent Vaccination Program**. Additionally, check [www.michigan.gov/flu](http://www.michigan.gov/flu) frequently for the most recent information and guidance.

**Stay Tuned! H1N1 Vaccine Provider Toolkit to be Posted on [www.michigan.gov/flu](http://www.michigan.gov/flu)**

The below materials will be included. For now, please see the attached documents.

- Fact sheet on the PREP Act for health care providers
- Sample agreement for vaccination services

### UPDATED NATIONAL GUIDANCE ON 2009 H1N1 VACCINE

On September 18, 2009, CDC updated the following guidance documents:

[2009 H1N1 Influenza Vaccine and Pregnant Women](#)

[CDC Novel H1N1 Vaccination Planning Q&A](#)

[What To Do If You Get Sick: 2009 H1N1 and Seasonal Flu](#)

### EARLY RESULTS FROM NIH: IN CHILDREN, 2009 H1N1 INFLUENZA VACCINE WORKS LIKE SEASONAL FLU VACCINE

View the [NIAID press release](#) and the [NIH press release](#).

A federal review of state and local pandemic preparedness efforts identified some gaps in medical surge planning and said that, while states are typically prepared to distribute antivirals and vaccines, some cities hadn't addressed all of the recommended planning components. You can read the entire report [here](#). A related news article can be found [here](#).

### RECENT 2009 H1N1 VACCINE IN THE NEWS

Influenza A (H1N1) 2009 Monovalent Vaccines Composition and [Lot Release](#) as of 9/24/2009

On September 25<sup>th</sup>, an [MMWR](#) was published on Performance of Rapid Influenza Diagnostic Tests During Two School Outbreaks of 2009 Pandemic Influenza A (H1N1) Virus Infection - Connecticut, 2009.

Two new expedited articles for the November 2009 issue of Emerging Infectious Diseases are now online.

[Preexisting Immunity to Pandemic \(H1N1\) 2009](#) by Xing Z, Cardona CJ.

[Serologic Survey of Pandemic \(H1N1\) 2009 Virus, Guangxi Province, China](#) by Chen H, Wang Y, Liu W, et al.

[US orders 27.3 million more doses of Sanofi vaccine](#)

[Sanofi to deliver swine flu vaccine in October](#)

## **SCHOOLS, COLLEGES AND DAYCARES**

### **RECENT FLU NEWS ON SCHOOLS AND COLLEGES**

[In Duke dorms, researchers try to detect flu, other viruses before symptoms appear](#)

### **UPDATES ON ANTIVIRALS**

#### **RECENT NEWS**

[BioCryst gets govt request for influenza drug supply](#)

[New Drugs May Attack Flu, but Not in Time](#)

### **INTERNATIONAL 2009 H1N1**

#### **INTERNATIONAL NEWS ARTICLES**

[WHO's Chan says severe cases could overwhelm ICUs](#)

[China begins mass vaccinations for swine flu](#)

[Feds right to dot I's, cross the T's on pandemic vaccine approval: Doctors](#)

## **BUSINESSES AND WORKPLACES**

#### **RECENT NEWS**

A recent survey found that 84% of employees feel pressure to show up for work when sick due to the current economy: [Most Americans Lacking Direction from Their Employers for the H1N1 Flu Season, Survey Shows](#)

[Pandemic flu experts share preparedness perspectives with businesses](#)

[Business conference airs challenges of H1N1 vaccine campaign](#)

## **MDCH Update**

### **FALL CONFERENCES**

Registration is open for the Fall Regional Immunization Conferences. For more information, click [here](#).

MDCH would like to extend an invite for any interested health care professional to become involved in the Flu Advisory Board (FAB). To join FAB, contact Cristi Carlton at [carltonc2@michigan.gov](mailto:carltonc2@michigan.gov)

FluBytes is distributed to MDCH flu partners for informational and communication purposes. Please feel free to distribute widely. An archived list of past FluBytes issues can be found [here](#).

To access the latest edition of Mi Flu Focus, click [here](#).

## **EPIDEMIOLOGY OF 2009 H1N1**

An article in the recent edition of *Emerging Infectious Diseases* looks at, [Using Satellite Images of Environmental Changes to Predict Infectious Disease Outbreaks](#).

### **CLINICAL CHARACTERISTICS OF 2009 H1N1**

#### **MICHIGAN-SPECIFIC CLINICIAN GUIDANCE:**

On September 18, 2009, MDCH posted the following guidance: [Update for Clinicians on the Reporting of Influenza-Associated Hospitalizations and Deaths for the 2009-2010 Influenza Season](#).

The following guidance was also updated: [MDCH 2009-2010 Guidelines for Clinicians on Influenza Testing](#).

#### **UPDATED NATIONAL GUIDANCE**

On September 21, 2009, CDC released updated guidance: [H1N1 Clinicians Questions and Answers](#)

#### **RECENT NEWS**

[Study: Flu viruses can spark heart attacks](#)

## **Flu Resources**

HHS Secretary Sebelius and Education Secretary Duncan Announce Winner of [2009 H1N1 PSA Contest](#)

CDC launched a 2009 H1N1 flu mobile texting pilot To subscribe to the [pilot](#), text HEALTH to 87000. Subscribers can expect to receive about three health messages a week during the three-month pilot.

Flu.gov has a new face and so much more! [www.flu.gov](http://www.flu.gov)

Michigan's H1N1 influenza web page: [www.michigan.gov/h1n1flu](http://www.michigan.gov/h1n1flu)

CDC's H1N1 influenza web page: [www.cdc.gov/H1N1flu](http://www.cdc.gov/H1N1flu)

World Health Organizations H1N1 web page: <http://www.who.int/csr/disease/swineflu/en/index.html>

Immunization Action Coalition H1N1 influenza web page: <http://www.immunize.org/h1n1/>

IAC's Needle Tips : <http://www.immunize.org/nt/>

The Lancet's Flu Resource Centre: <http://www.lancet.com/H1N1-flu>