

SURVIVING THE CHANGE TO THE 2012 LIFE SAFETY CODE

MiSHE Annual Conference

September 26, 2014



2013 Rules Directives

- ▣ Based upon the 2012 edition of NFPA 101, Life Safety Code
- ▣ Keep amendments at a minimum
 - Retain consistency with CMS
 - Administrative directives



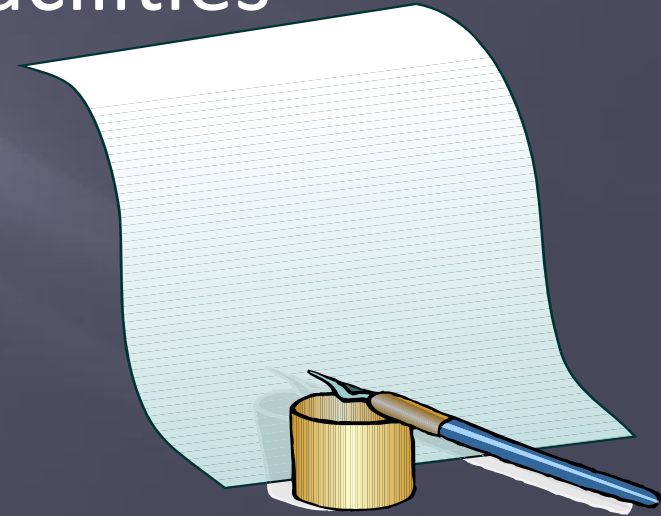
Proposed Rules

- ▣ Part I - General
 - Change names
 - Update code references and costs
- ▣ Part II - FSOF
 - Correct previous error in chapter assignments
- ▣ Part III - Hospitals
 - No changes
- ▣ Part IV – Nursing Homes
 - No changes



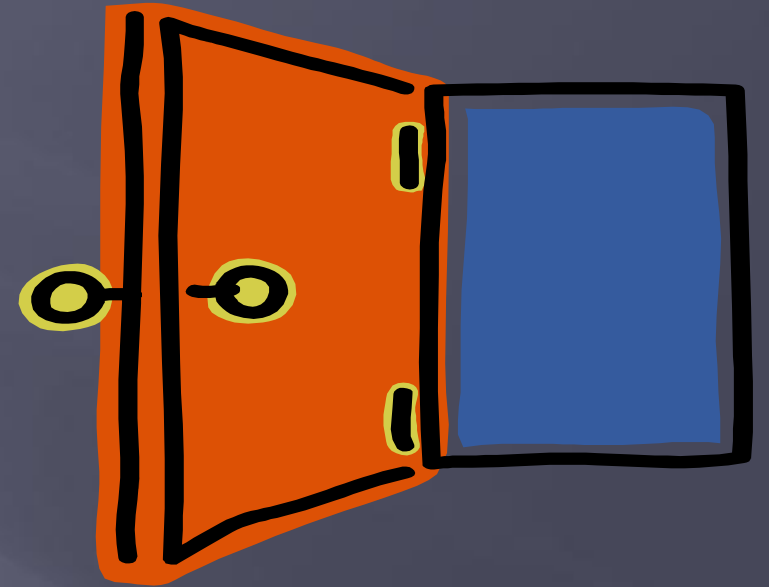
Proposed Rules

- ▣ Part V – Home for the Aged
 - No changes from current
- ▣ Part VI – Mobile & Transportable Facilities
 - Update code reference
- ▣ Part VII – Hospice Facilities
 - No changes



2012 Life Safety Code Change Highlights

- ▣ Door Inspections (7.2.1.15)
 - Annually
 - ▣ Panic/Fire exit hardware equipped doors
 - ▣ Exit enclosures
 - ▣ Electronically controlled egress
 - ▣ Special locking
 - ▣ Fire-rated and smoke-rated door assemblies
 - Documentation Required



2012 Life Safety Code Change Highlights

- ▣ Normally Unoccupied Building Service Equipment Support Areas (7.13)
 - Primarily maintenance access spaces
 - No fuel-fired equipment or storage
 - Significant modifications to egress requirements

2012 Life Safety Code Change Highlights

- ▣ Protection of Fire Alarm System (9.6.1.8.1)
 - Smoke detection required at unoccupied locations of
 - ▣ Fire alarm control unit
 - ▣ NAC power extenders
 - ▣ Supervising station transmitting equipment



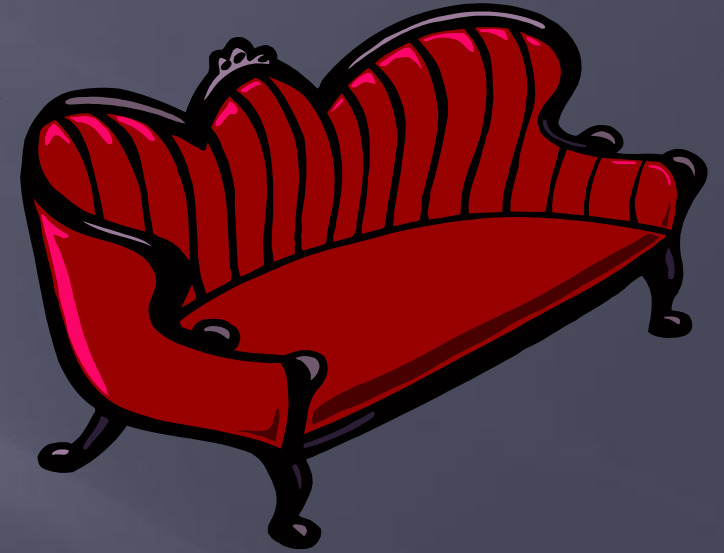
2012 Life Safety Code Change Highlights

- ▣ Corridor Projections (18/19.2.3.4)
 - Non-continuous <6 inches that are above handrail height
 - Wheeled equipment
 - ▣ Maintains 60 inches clear
 - ▣ Fire safety plan addresses relocation in an emergency
 - ▣ Equipment limited to carts, emergency medical equipment and lift/transport equipment
 - Same for HFA



2012 Life Safety Code Change Highlights

- ▣ Corridor Projections (18/19.2.3.4) cont.
 - Seating
 - ▣ Corridor 8 foot minimum width
 - ▣ Fixed in place
 - ▣ Maintain 6 foot clear width
 - ▣ One side of corridor only
 - ▣ 50 sq. ft. area maximums separated by 10 foot minimum
 - ▣ Smoke detection or direct visual supervision
 - HFA amendment is maintained in proposed rules



2012 Life Safety Code Change Highlights

- ▣ Suites (18/19.2.5.7)
 - Clearly defines sleeping & non-sleeping suite requirements
 - Changes relax some requirements for new construction
 - No impact for existing compliant

2012 Life Safety Code Change Highlights

- ▣ Hazardous Areas (19.3.2.1.5)
 - Soiled Linen with less than 64 gal. exempt
 - “Rooms with collected trash” with less than 64 gal. exempt
- ▣ Converted Hazardous Areas (43.7.1.2)
 - Meet existing requirements
 - ▣ Under 250 sq. ft.
 - ▣ Fully sprinklered building



2012 Life Safety Code Change Highlights

- ▣ Cooking Facilities (18/19.3.2.5)
 - Serve maximum of 30 beds, single smoke compartment
 - Hood over cooking surfaces
 - Suppression system and fire extinguisher
 - No deep-fat frying
 - Disconnecting switch
 - Suppressed smoke compartment
 - Photoelectric smoke detectors (2) at 20 feet from hood
 - ▣ Not required if separated from corridor



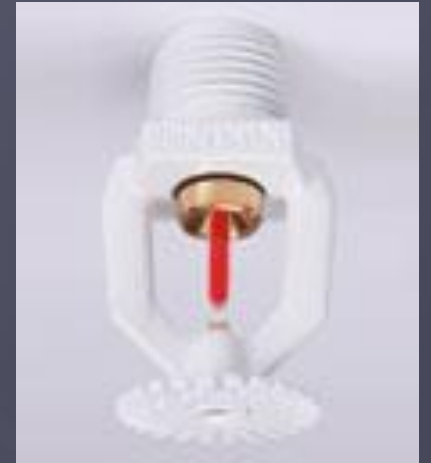
2012 Life Safety Code Change Highlights

- ▣ ABHR (18/19.3.2.6)
 - Aerosol limited to 18 oz.
 - One dispenser per room doesn't count toward total
 - Ignition source
 - ▣ Not above
 - ▣ Not within 1 inch horizontally
 - ▣ At least 1 inch below



2012 Life Safety Code Change Highlights

- ▣ Sprinkler Protection (18/19.3.5)
 - High-Rise Buildings (19.3.5.2/19.4.2)
 - ▣ Sprinkler protection within 12 years of adoption
 - High-Rise is occupiable floor >75' from lowest level of fire department access
 - Hospital Closets (18/19.3.5.10)
 - ▣ No heads required if less than 6 sq. ft.
 - ▣ Room heads must be able to cover the entire space



2012 Life Safety Code Change Highlights

- ▣ Fireplaces (18/19.5.2.3)
 - Direct-Vent Gas Fireplaces
 - ▣ Not in a patient sleeping room
 - ▣ Smoke compartment fully sprinklered with quick response or residential sprinklers
 - ▣ Sealed glass front
 - ▣ Locked controls
 - ▣ Electrically supervised carbon monoxide detector in the room



2012 Life Safety Code Change Highlights

- ▣ Fireplaces (18/19.5.2.3)
 - Direct-Vent Gas Fireplaces
 - Solid-Fuel Fireplaces
 - ▣ 1 hour separation from patient sleeping areas
 - ▣ Enclosure “guaranteed” not to break up to 650F
 - ▣ Electrically supervised carbon monoxide detector in the room



2012 Life Safety Code Change Highlights

- ▣ Decorations (18/19.7.5.6)
 - Flame-Retardant or Treated
 - Meet NFPA 701 for textiles and Films
 - Documented heat release to NFPA 289

2012 Life Safety Code Change Highlights

- ▣ Decorations (18/19.7.5.6)
 - Now permitted to have “photographs, paintings, and other art” attached to walls, ceilings, or non-rated doors
 - ▣ No interference with door operation
 - ▣ Not exceeding 20% of wall area for non-sprinklered
 - ▣ Not exceeding 30% for space with sprinklered smoke compartment
 - ▣ Not exceeding 50% for resident rooms (less than 4) with sprinklered smoke compartment

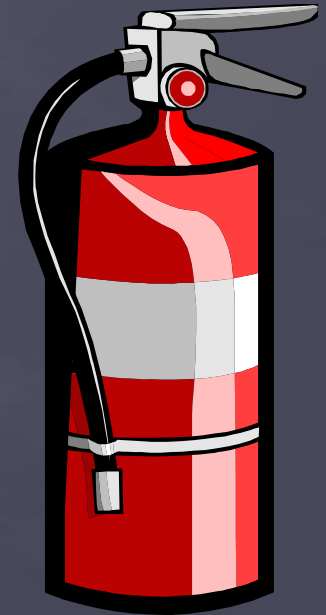
2012 Life Safety Code Change Highlights

- ▣ Recycling Bins (18/19.7.5.7.2)
 - Recycling clean waste or documents awaiting destruction
 - Max 96 gallon capacity (each)
 - Must meet FM Standard 6921 or equivalent
 - No limits in hazardous areas



Referenced Codes Changes

- ▣ NFPA 10 (2010)
 - Now permits electronic monitoring of fire extinguishers
 - Takes the place of monthly inspections



Referenced Codes Changes

- ▣ NFPA 13 (2010)
 - Specific gravity testing for new antifreeze system installations (8.15.7)
 - ▣ Also required for existing antifreeze systems under NFPA 25 (8.3.4)



Referenced Codes Changes

- ▣ NFPA 13 (2010, 8.15.7)
 - Canopies do not require sprinklers based on the following:
 - ▣ Non-combustible construction materials with no storage
 - 2 feet width if combustibles are stored below
 - ▣ Non-combustible finishes with the concealed combustible space protected by sprinklers or:
 - Concealed space filled with non-combustible insulation
 - Concealed space is <160 cu. ft. and remaining attic is sprinklered
 - Canopies under 55 sq. ft.

Referenced Codes Changes

- ▣ NFPA 25 (2011)
 - Sprinkler Impairments (15.5.2)
 - ▣ Limits changed to 10 hours within a 24-hour period



Referenced Codes Changes

- ▣ NFPA 80 (2010)
 - Fire Damper Inspection (19.4)
 - ▣ 1 year after installation
 - ▣ Every 4 years
 - Hospitals every 6 years
 - Combination smoke/fire dampers with fusible links
 - ▣ NFPA 105 has same requirements



Referenced Codes Changes

- ▣ NFPA 110 (2010)
 - Specific gravity tested monthly (8.3.7.1)
 - ▣ Option to use conductance testing of battery
 - Spark-ignited generator sets (8.4.2.4)
 - ▣ 30 minute run time or
 - ▣ Water and oil temp stabilize
 - 3 year load test (8.4.9)



Questions

