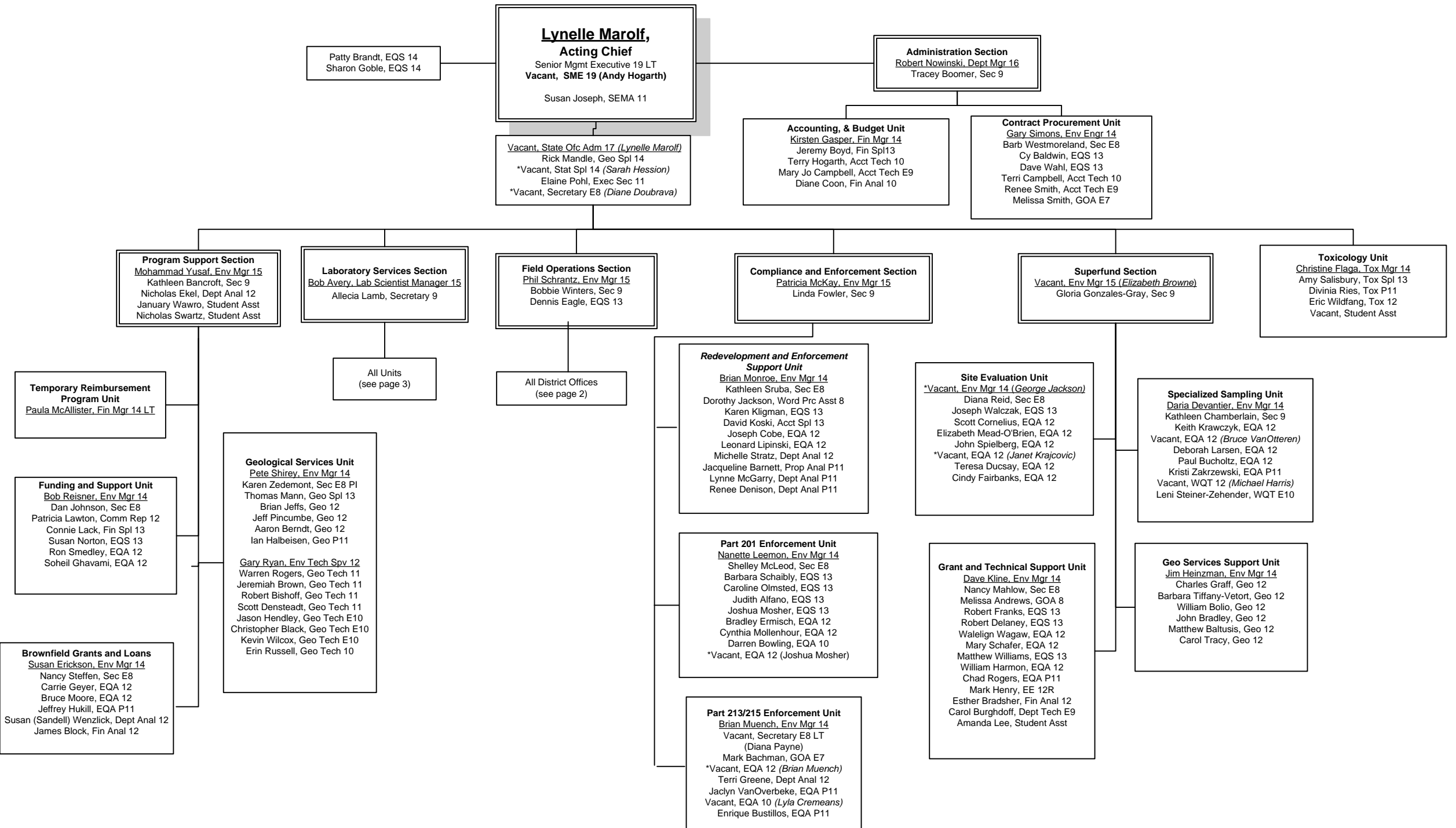


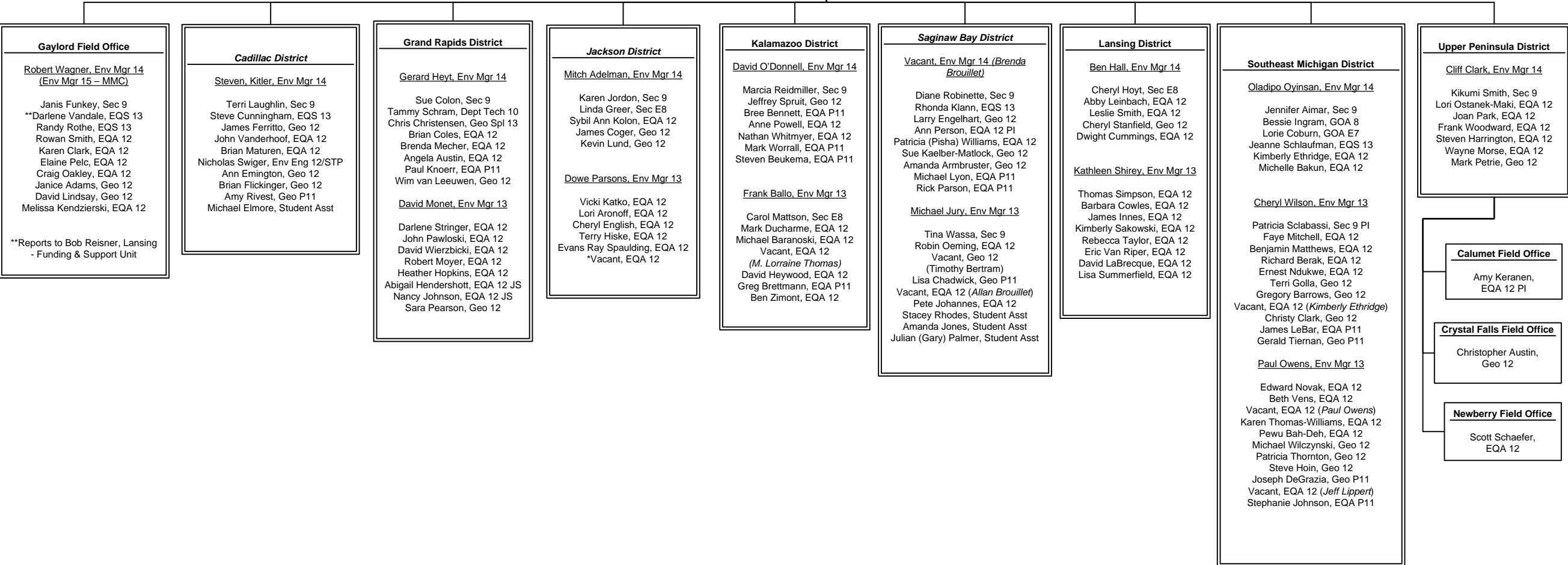
# REMEDIATION AND REDEVELOPMENT DIVISION



\* = Unfunded; ( ) = Previous Incumbent

# REMEDIATION AND REDEVELOPMENT DISTRICT OFFICES

**Field Operations Section**  
 Phil Schrantz, Env Mgr 15  
 Bobbie Winters, Sec 9  
 Dennis Eagle, EQS 13



**Gaylord Field Office**  
Robert Wagner, Env Mgr 14  
 (Env Mgr 15 – MMC)  
 Janis Funkey, Sec 9  
 \*\*Darlene Vandale, EQS 13  
 Randy Rothe, EQS 13  
 Rowan Smith, EQA 12  
 Karen Clark, EQA 12  
 Elaine Pelc, EQA 12  
 Craig Oakley, EQA 12  
 Janice Adams, Geo 12  
 David Lindsay, Geo 12  
 Melissa Kendzierski, EQA 12  
 \*\*Reports to Bob Reisner, Lansing  
 - Funding & Support Unit

**Cadillac District**  
Steven, Kitler, Env Mgr 14  
 Terri Laughlin, Sec 9  
 Steve Cunningham, EQS 13  
 James Ferritto, Geo 12  
 John Vanderhoof, EQA 12  
 Brian Maturen, EQA 12  
 Nicholas Swiger, Env Eng 12/STP  
 Ann Emington, Geo 12  
 Brian Flickinger, Geo 12  
 Amy Rivest, Geo P11  
 Michael Elmore, Student Asst

**Grand Rapids District**  
Gerard Heyt, Env Mgr 14  
 Sue Colon, Sec 9  
 Tammy Schram, Dept Tech 10  
 Chris Christensen, Geo Spl 13  
 Brian Coles, EQA 12  
 Brenda Mecher, EQA 12  
 Angela Austin, EQA 12  
 Paul Knoerr, EQA P11  
 Wim van Leeuwen, Geo 12  
David Monet, Env Mgr 13  
 Darlene Stringer, EQA 12  
 John Pawloski, EQA 12  
 David Wierzbicki, EQA 12  
 Robert Moyer, EQA 12  
 Heather Hopkins, EQA 12  
 Abigail Hendershott, EQA 12 JS  
 Nancy Johnson, EQA 12 JS  
 Sara Pearson, Geo 12

**Jackson District**  
Mitch Adelman, Env Mgr 14  
 Karen Jordon, Sec 9  
 Linda Greer, Sec E8  
 Sybil Ann Kolon, EQA 12  
 James Coger, Geo 12  
 Kevin Lund, Geo 12  
Dowe Parsons, Env Mgr 13  
 Vicki Katko, EQA 12  
 Lori Aronoff, EQA 12  
 Cheryl English, EQA 12  
 Terry Hiske, EQA 12  
 Evans Ray Spaulding, EQA 12  
 \*Vacant, EQA 12

**Kalamazoo District**  
David O'Donnell, Env Mgr 14  
 Marcia Reidmiller, Sec 9  
 Jeffrey Spruit, Geo 12  
 Bree Bennett, EQA P11  
 Anne Powell, EQA 12  
 Nathan Whitmyer, EQA 12  
 Mark Worrall, EQA P11  
 Steven Beukema, EQA P11  
Frank Ballo, Env Mgr 13  
 Carol Mattson, Sec E8  
 Mark Ducharme, EQA 12  
 Michael Baranoski, EQA 12  
 Vacant, EQA 12  
 (M. Lorraine Thomas)  
 David Heywood, EQA 12  
 Greg Brettmann, EQA P11  
 Ben Zimont, EQA 12

**Saginaw Bay District**  
Vacant, Env Mgr 14 (Brenda Brouillet)  
 Diane Robinette, Sec 9  
 Rhonda Klann, EQS 13  
 Larry Engelhart, Geo 12  
 Ann Person, EQA 12 PI  
 Patricia (Pisha) Williams, EQA 12  
 Sue Kaelber-Matlock, Geo 12  
 Amanda Armbruster, Geo 12  
 Michael Lyon, EQA P11  
 Rick Parson, EQA P11  
Michael Jury, Env Mgr 13  
 Tina Wassa, Sec 9  
 Robin Oeming, EQA 12  
 Vacant, Geo 12  
 (Timothy Bertram)  
 Lisa Chadwick, Geo P11  
 Vacant, EQA 12 (Allan Brouillet)  
 Pete Johannes, EQA 12  
 Stacey Rhodes, Student Asst  
 Amanda Jones, Student Asst  
 Julian (Gary) Palmer, Student Asst

**Lansing District**  
Ben Hall, Env Mgr 14  
 Cheryl Hoyt, Sec E8  
 Abby Leinbach, EQA 12  
 Leslie Smith, EQA 12  
 Cheryl Stanfield, Geo 12  
 Dwight Cummings, EQA 12  
Kathleen Shirey, Env Mgr 13  
 Thomas Simpson, EQA 12  
 Barbara Cowles, EQA 12  
 James Innes, EQA 12  
 Kimberly Sakowski, EQA 12  
 Rebecca Taylor, EQA 12  
 Eric Van Riper, EQA 12  
 David LaBrecque, EQA 12  
 Lisa Summerfield, EQA 12

**Southeast Michigan District**  
Oladipo Oyinsan, Env Mgr 14  
 Jennifer Aimar, Sec 9  
 Bessie Ingram, GOA 8  
 Lorie Coburn, GOA E7  
 Jeanne Schlaufman, EQS 13  
 Kimberly Ethridge, EQA 12  
 Michelle Bakun, EQA 12  
Cheryl Wilson, Env Mgr 13  
 Patricia Scabassi, Sec 9 PI  
 Faye Mitchell, EQA 12  
 Benjamin Matthews, EQA 12  
 Richard Berak, EQA 12  
 Ernest Ndukwe, EQA 12  
 Terri Golla, Geo 12  
 Gregory Barrows, Geo 12  
 Vacant, EQA 12 (Kimberly Ethridge)  
 Christy Clark, Geo 12  
 James LeBar, EQA P11  
 Gerald Tiernan, Geo P11  
Paul Owens, Env Mgr 13  
 Edward Novak, EQA 12  
 Beth Vens, EQA 12  
 Vacant, EQA 12 (Paul Owens)  
 Karen Thomas-Williams, EQA 12  
 Pewu Bah-Deh, EQA 12  
 Michael Wilczynski, Geo 12  
 Patricia Thornton, Geo 12  
 Steve Hoin, Geo 12  
 Joseph DeGrazia, Geo P11  
 Vacant, EQA 12 (Jeff Lippert)  
 Stephanie Johnson, EQA P11

**Upper Peninsula District**  
Cliff Clark, Env Mgr 14  
 Kikumi Smith, Sec 9  
 Lori Ostanek-Maki, EQA 12  
 Joan Park, EQA 12  
 Frank Woodward, EQA 12  
 Steven Harrington, EQA 12  
 Wayne Morse, EQA 12  
 Mark Petrie, Geo 12

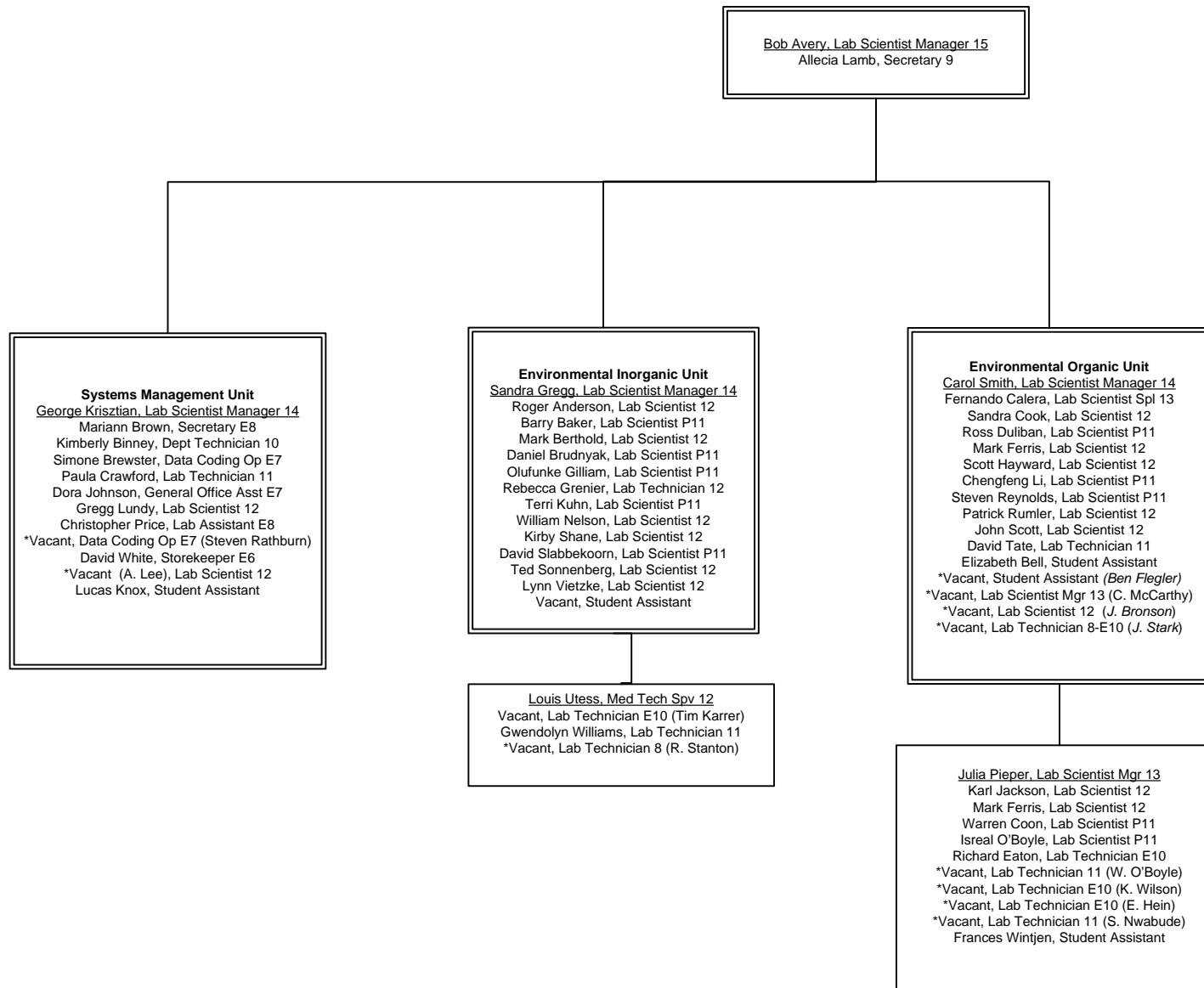
**Calumet Field Office**  
 Amy Keranen,  
 EQA 12 PI

**Crystal Falls Field Office**  
 Christopher Austin,  
 Geo 12

**Newberry Field Office**  
 Scott Schaefer,  
 EQA 12

\* = Unfunded; ( ) = Previous Incumbent

**REMEDATION AND REDEVELOPMENT  
LABORATORY SERVICES SECTION**



\* = Unfunded; ( ) = Previous Incumbent