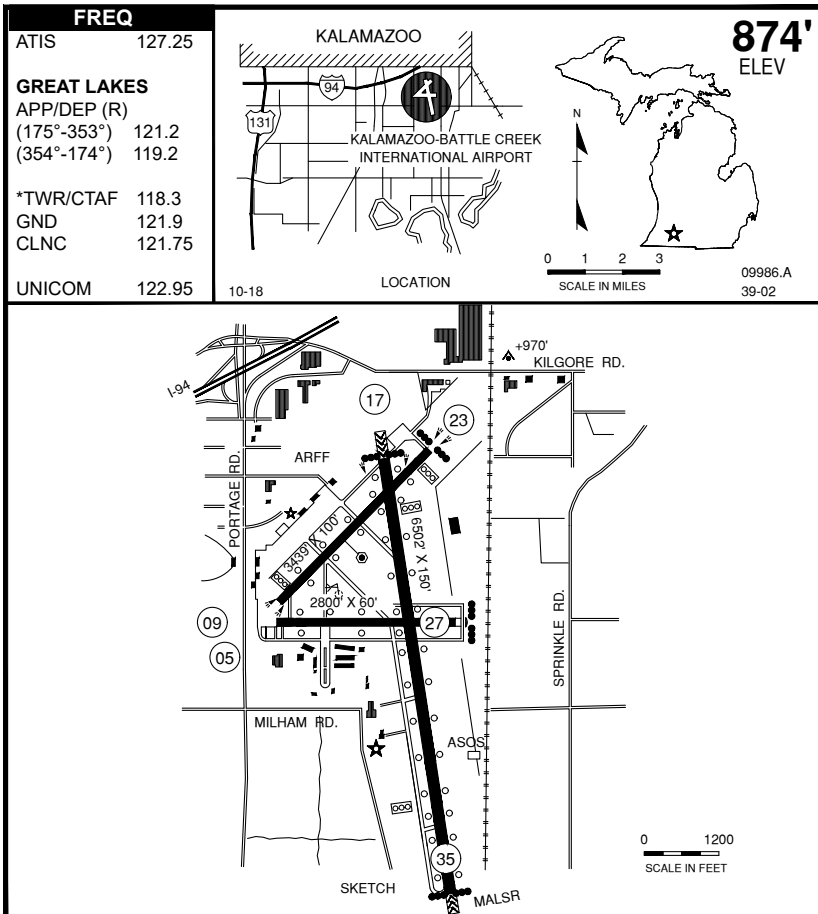


KALAMAZOO/BATTLE CREEK INT'L (AZO)



K

RWY LENGTH BEYOND DISPLACED THR

05/ — * 09/ — * 17/ —
 23/ — * 27/ — * 35/ —

COORDINATES

42° 14.06'N
 085° 33.09'W

License
 Air Carrier

FM CITY: 3.0 mi SE

LG: ROTG BCN, HIRL, MIRL, MALS, REIL,
 PAPI-ATCT CTL. AFT TWR CLSD* rwy
 17/35 (preset 10% intsty) intsty ctl and actvt,
 REIL, MALS & MIRL, PAPI rwy 05/23,
 09/27- STD PCL CTAF.

MGR: Amanda Woodin

PH: 269-388-3668

FBO: Duncan Aviation 269-343-2548,
 Kalamazoo Aircraft 269-381-0790

ATND: 24 hrs

- FAA Class "D" Airspace durg *twr opns 0600-2300, otr times Class "G".
- After TWR hrs, CHI Apch/Dep monitors 121.2 for Clnc Del.
- Noise curfew 2300-0630 (LCL) 75,000# WT limit, under 75,000# must meet far 36 stage II.
- Customs Indg rights arpt call 269-965-3349.
- Parking fee.
- No GA pkg on air carrier ramp.
- Migratory water fowl roosting area 5500' S of apch end rwy 35. Birds on & invof arpt.
- TPA 1674' MSL (800' AGL).

NAV AIDS: IAP, 109.0 (AZO) at fld, NDB (AZ)

371 KHz 354° 6.3 NM to fld, ILS.

FUEL: 100LL, JET A

RPR: Major A&P

WX: LAWRS, ASOS 269-459-3391

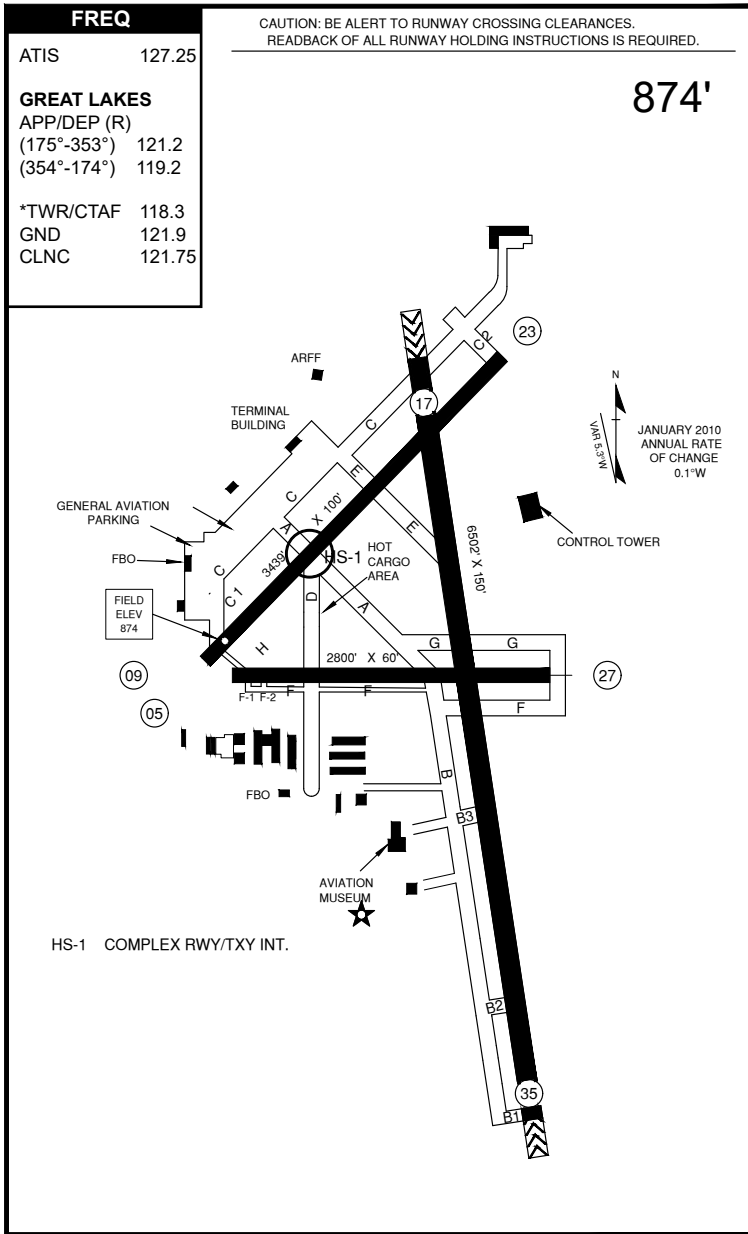
SNW RMVL: Yes

TRNSP: Taxi, Rntl car (at arpt)

MEALS: At arpt / 0.5 MI

RON: At arpt / 0.5 MI, CC

KALAMAZOO/BATTLE CREEK INT'L TAXIWAY



Runway Incursion Hot Spots

HS 1 Complex Rwy/Txy intersection .