

## GENETIC CENTERS IN MICHIGAN

**Children's Hospital of Michigan  
DMC Detroit Medical Center**  
Genetic and Metabolic Disorders  
313-832-9330

**C.S. Mott Children's Hospital**  
**University of Michigan Health System Locations:**  
*Genetics at Mott Children's Hospital*  
734-764-0579

*Munson Medical Center*  
231-955-6650

*Marquette General Hospital*  
906-225-4777

**Henry Ford Medical Center Locations:**  
*New Center One Detroit*  
313-916-2600

*Sterling Heights*  
586-977-9300

*West Bloomfield Hospital*  
248-325-1000

**Michigan State University, E. Lansing**  
*Western Michigan University School of  
Medicine Clinic*  
517-364-5860

*Mott Children's Health Center*  
810-767-5750

*Sparrow Professional Building*  
517-355-1297

**Children's Hospital of Spectrum Health,**  
616-391-2700

**Beaumont Children's Hospital**  
248-551-0487

## STATE OF MICHIGAN RESOURCES

### Genetics Program

E-mail: [genetics@michigan.gov](mailto:genetics@michigan.gov)  
Phone: (866) 852-1247 (toll-free) or  
(517) 335-8887  
[www.migr.org](http://www.migr.org)

### Early Hearing Detection and Intervention Program

Phone: (517) 335-8955  
[www.michigan.gov/ehdi](http://www.michigan.gov/ehdi)

### Children's Special Health Care Services

The Family Phone Line 1-800-359-3722  
E-mail: [cshcsfc@michigan.gov](mailto:cshcsfc@michigan.gov)  
[www.michigan.gov/cshcs](http://www.michigan.gov/cshcs)

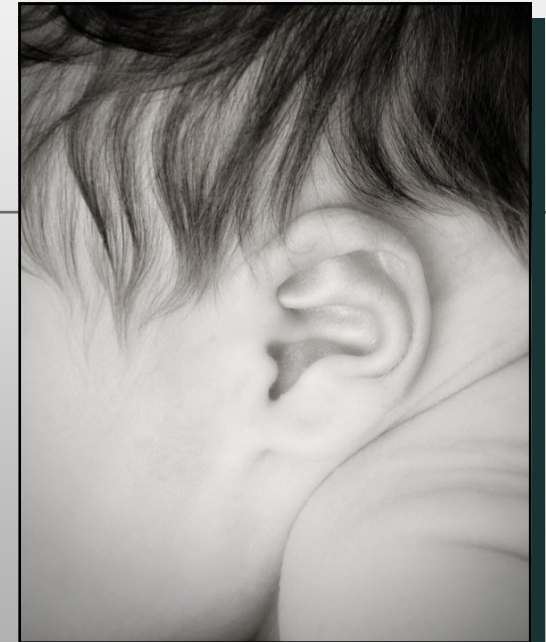
### EarlyOn<sup>®</sup> Michigan

E-mail: [eoreferral@edzone.net](mailto:eoreferral@edzone.net)  
1-800-327-5966  
[www.1800EarlyOn.org](http://www.1800EarlyOn.org)



Printed by Michigan  
Department of Health and Human Resources  
EHDI Program.  
Date of printing: 6/9/2015  
This form can be reproduced  
but only in its entirety.

## Genetics and Young Children with Hearing Loss



Michigan Early Hearing Detection  
and Intervention Program

# MICHIGAN EARLY HEARING DETECTION AND INTERVENTION PROGRAM

The Michigan EHDI Program suggests a genetic evaluation for babies and young children with hearing loss. Many families wonder why this is important. This pamphlet provides some information about genes and hearing loss. It also explains what to expect at a genetics clinic.

## **WHAT ARE GENES?**

Genes are like a recipe for the human body. They tell all the parts of the body how to grow and function. A *genetic condition* occurs when a person has a change in a gene that prevents it from working correctly.

## **HOW ARE GENES RELATED TO HEARING LOSS?**

Half of all incidences of hearing loss are caused by genetic factors. This is true even when no other family members are known to have hearing loss. Genetic hearing loss may be linked to health or learning problems.

## **WHY IS IT IMPORTANT TO FIND OUT IF MY CHILD'S HEARING LOSS IS GENETIC?**

It is important to find out if your child is at risk for other health conditions. You might also want to know the chance for your other children to have hearing loss or other risks. By knowing more about your child's hearing loss, you can best decide what to do for your child and family.

## **HOW IS HEARING LOSS INHERITED?**

Genetic hearing loss can be passed down in a family in different ways. Sometimes hearing loss occurs in every generation. More often, only one child, or brothers and sisters, may be affected. Even if there is no hearing loss in your family, the cause could still be genetic. It is not unusual for children with genetic hearing loss to appear otherwise normal.

## **HOW DO I FIND OUT IF MY CHILD HAS A GENETIC HEARING LOSS?**

Make an appointment to have your child seen at a genetics clinic. Your child's doctor, audiologist, and/or an Early On® provider can help you make the appointment and collect the medical information needed. You can also call one of the clinics listed on the back of this brochure.

## **WHAT HAPPENS AT THE GENETICS APPOINTMENT?**

Your child's health history and records will be reviewed. You will also be asked questions about your family's medical history. A health exam will be done to look for certain signs of genetic hearing loss. Based on the history and exam, the doctor will discuss with you whether any tests (such as blood or urine) are needed and what might be learned from them.

The doctor will then look at all the information and try to figure out if the hearing loss is caused by genetic or other factors. You will have time to discuss what has been learned with the genetics clinic staff. This may include suggestions for your child's future medical care. A report will also be sent to your child's doctor.

## **WHAT HAPPENS IF THE CAUSE IS NOT FOUND?**

More is being learned about genetics every day. If the cause of your child's hearing loss is not found the first time, your family may be asked to return in a year or two to see if there is any new information.

## **WILL INSURANCE COVER THE COST OF THE APPOINTMENT?**

The clinic visit and genetic testing is covered by many insurance plans, including Medicaid and Children's Special Health Care Services. Check with your own plan to be sure. You may need a referral from your child's primary doctor. If you cannot afford the genetics clinic visit and need help finding coverage, please e-mail [genetics@michigan.gov](mailto:genetics@michigan.gov) or call (866) 852-1247 (toll-free).

