

***MEDICAID BLOOD LEAD TESTING***

*Michigan Department  
of Community Health*



July 2009

## **Blood Lead Testing Methodology**

- **Children must have been eligible for one of the following programs in July 2009**
  - Medicaid Managed Care (MC)
    - enrolled in a Medicaid Health Plan (MHP)
  - Medicaid Fee-for-Service (FFS)
    - enrolled for Medicaid Only FFS coverage
  - Medicaid and CSHCS Dual Eligible (Duals)
    - dually eligible for both Medicaid and CSHCS
- **Blood Lead testing results include children tested:**
  - on or before indicated birthday for 2 and 3 year olds
  - at any time between ages 1 to 6
- **Unique Client Identifier (UCI) used to establish link between Medicaid and lead databases.**

## Blood Lead Testing Summary

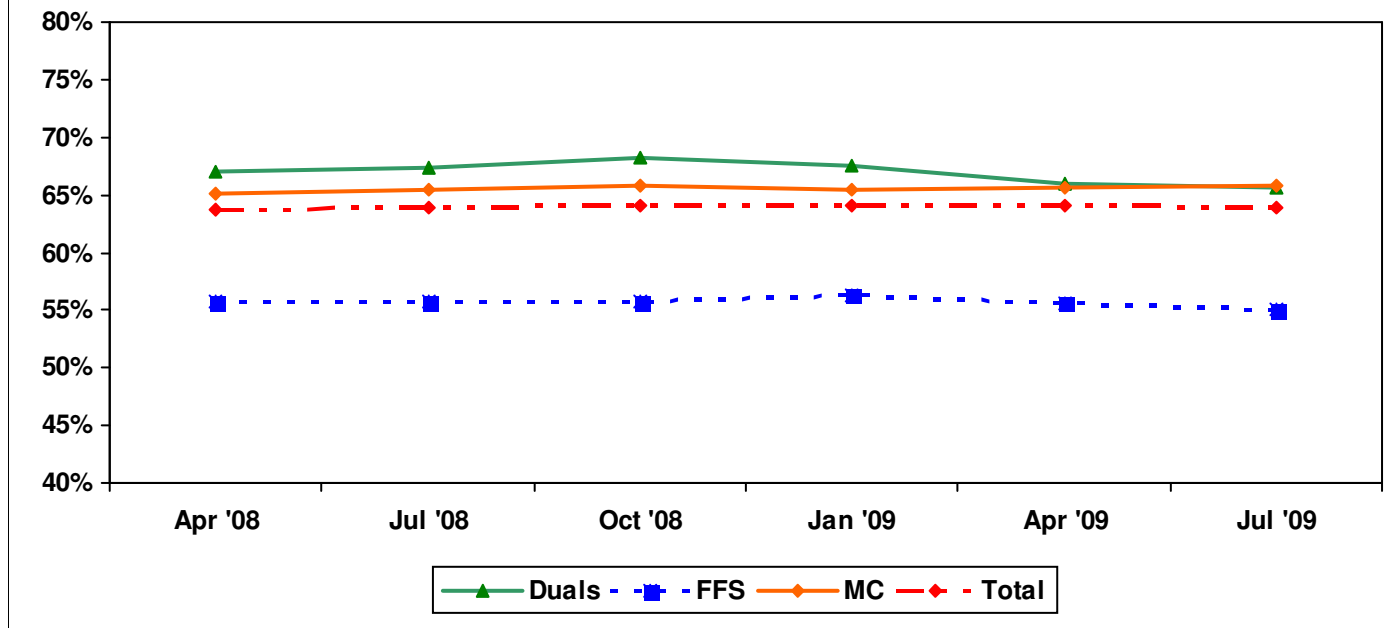
- **2 year old children tested on or before their 2nd birthday**

- 64% Statewide
- 68% City of Detroit
- 66% Statewide for Medicaid MC
  - 74% Statewide for Medicaid MC with 12-Month Continuous Enrollment
- 55% Statewide for Medicaid Only FFS Eligibles
- 66% Statewide for CSHCS Duals

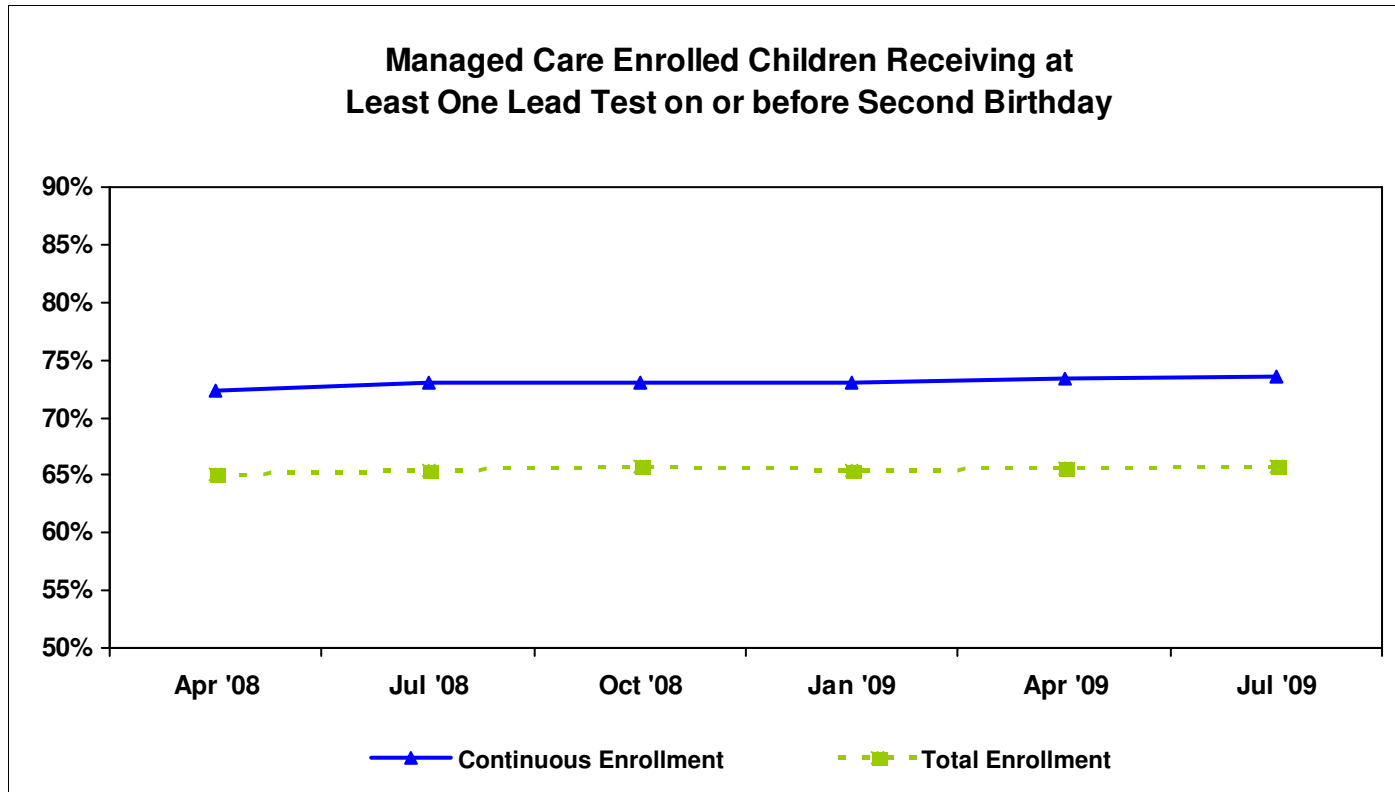
- **3 year old children tested on or before their 3rd birthday**

- 72% Statewide
- 79% City of Detroit
- 74% Statewide for Medicaid MC
  - 81% Statewide for Medicaid MC with 12-Month Continuous Enrollment
- 62% Statewide for Medicaid Only FFS Eligibles
- 74% Statewide for CSHCS Duals

### Children Receiving at Least One Blood Lead Test on or before Second Birthday by Program Eligibility



### Managed Care Enrolled Children Receiving at Least One Lead Test on or before Second Birthday



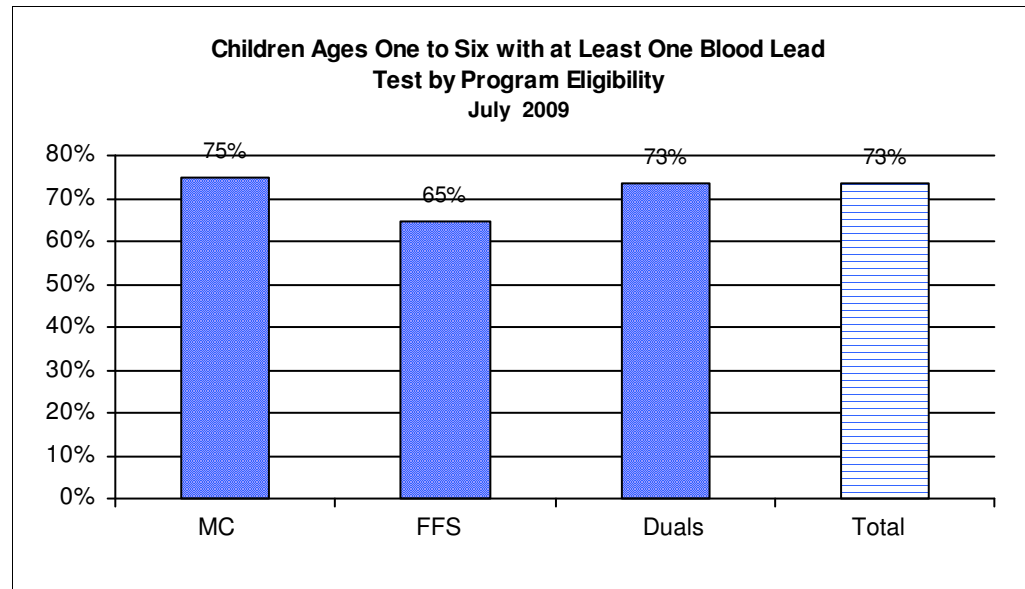
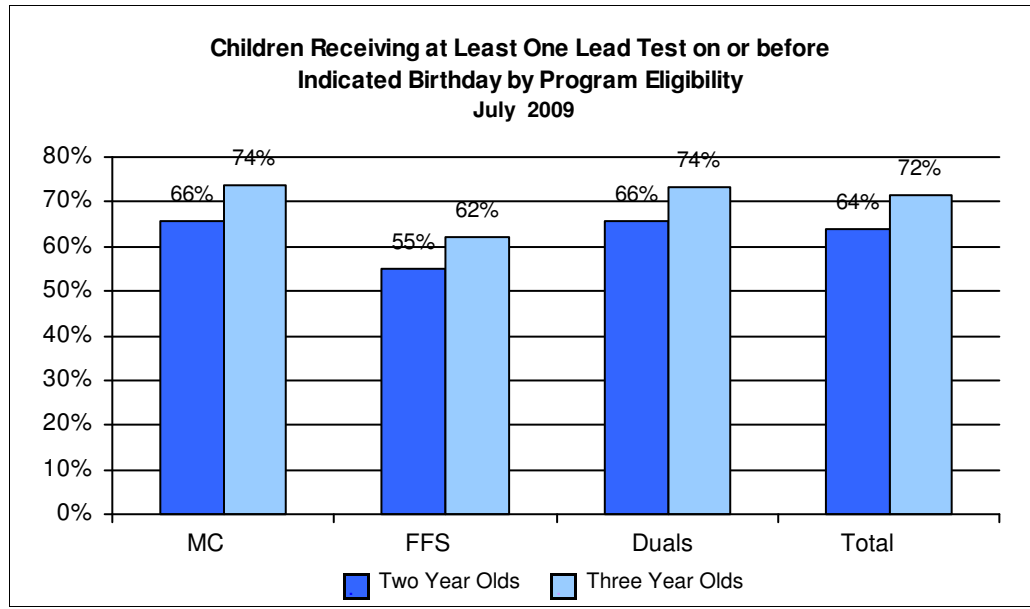
#### Total Enrollment

-Enrolled in measurement month

#### Continuous Enrollment

-Based on MMIS eligibility system

-Enrolled in same health plan for the measurement month and 12 months preceding 2nd birthday, with a 1-month allowable gap.



**Table 1. Percent of Children with at Least One Blood Lead Test on or before their Second Birthday**

<b>Program</b>	<b>Jul-08</b>	<b>Aug-08</b>	<b>Sep-08</b>	<b>Oct-08</b>	<b>Nov-08</b>	<b>Dec-08</b>	<b>Jan-09</b>	<b>Feb-09</b>	<b>Mar-09</b>	<b>Apr-09</b>	<b>May-09</b>	<b>Jun-09</b>	<b>Jul-09</b>
MC	65.5%	65.6%	65.5%	65.7%	65.4%	65.6%	65.5%	65.4%	65.6%	65.7%	65.7%	65.4%	65.8%
FFS	55.7%	55.6%	55.5%	55.7%	56.4%	55.9%	56.2%	56.0%	55.1%	55.6%	54.6%	55.3%	55.0%
Duals	67.3%	65.9%	67.4%	68.2%	67.5%	68.0%	67.5%	66.9%	66.6%	66.0%	65.7%	65.5%	65.6%
<b>Total</b>	<b>64.0%</b>	<b>64.0%</b>	<b>63.9%</b>	<b>64.1%</b>	<b>64.1%</b>	<b>64.1%</b>	<b>64.1%</b>	<b>64.1%</b>	<b>63.9%</b>	<b>64.0%</b>	<b>63.7%</b>	<b>63.8%</b>	<b>63.9%</b>

**Table 2. Percent of Children with at Least One Blood Lead Test on or before their Third Birthday**

<b>Program</b>	<b>Jul-08</b>	<b>Aug-08</b>	<b>Sep-08</b>	<b>Oct-08</b>	<b>Nov-08</b>	<b>Dec-08</b>	<b>Jan-09</b>	<b>Feb-09</b>	<b>Mar-09</b>	<b>Apr-09</b>	<b>May-09</b>	<b>Jun-09</b>	<b>Jul-09</b>
MC	74.0%	74.2%	74.3%	74.5%	74.1%	74.2%	74.0%	73.7%	73.6%	73.6%	73.6%	73.0%	73.7%
FFS	61.9%	62.9%	62.5%	61.8%	62.0%	62.5%	62.1%	63.1%	62.5%	63.2%	62.4%	62.5%	62.3%
Duals	70.3%	70.4%	70.0%	71.0%	71.1%	71.9%	72.9%	71.9%	71.8%	73.5%	73.3%	73.1%	73.5%
<b>Total</b>	<b>72.0%</b>	<b>72.2%</b>	<b>72.2%</b>	<b>72.3%</b>	<b>72.1%</b>	<b>72.2%</b>	<b>72.1%</b>	<b>72.0%</b>	<b>71.6%</b>	<b>71.8%</b>	<b>71.5%</b>	<b>71.4%</b>	<b>71.7%</b>

**Table 3. Percent of Children Ages One to Six with at Least One Blood Lead Test**

<b>Program</b>	<b>Jul-08</b>	<b>Aug-08</b>	<b>Sep-08</b>	<b>Oct-08</b>	<b>Nov-08</b>	<b>Dec-08</b>	<b>Jan-09</b>	<b>Feb-09</b>	<b>Mar-09</b>	<b>Apr-09</b>	<b>May-09</b>	<b>Jun-09</b>	<b>Jul-09</b>
MC	73.4%	73.3%	73.8%	74.1%	74.1%	74.1%	73.8%	73.4%	73.7%	73.8%	74.7%	75.0%	74.9%
FFS	63.3%	63.7%	64.1%	64.1%	64.2%	64.0%	64.1%	63.8%	63.2%	63.7%	64.5%	64.4%	64.7%
Duals	70.9%	70.0%	70.5%	70.8%	71.0%	71.3%	71.5%	71.2%	71.5%	71.7%	72.6%	72.9%	73.3%
<b>Total</b>	<b>71.7%</b>	<b>71.7%</b>	<b>72.1%</b>	<b>72.4%</b>	<b>72.5%</b>	<b>72.4%</b>	<b>72.3%</b>	<b>71.9%</b>	<b>71.9%</b>	<b>72.0%</b>	<b>73.0%</b>	<b>73.1%</b>	<b>73.3%</b>

**Table 4. Statewide Blood Lead Testing of Two and Three Year Old Children for All Programs**

**July 2009**

County	2 Years of Age			3 Years of Age		
	Eligibles	Eligibles with at least 1 test on or before their 2nd birthday	Percent of Eligibles with at least 1 test on or before their 2nd birthday	Eligibles	Eligibles with at least 1 test on or before their 3rd birthday	Percent of Eligibles with at least 1 test on or before their 3rd birthday
ALCONA	47	35	74%	39	34	87%
ALGER	41	34	83%	46	39	85%
ALLEGAN	704	416	59%	662	446	67%
ALPENA	165	126	76%	163	130	80%
ANTRIM	135	97	72%	112	78	70%
ARENAC	92	63	68%	96	71	74%
BARAGA	50	36	72%	55	44	80%
BARRY	320	225	70%	269	199	74%
BAY	620	463	75%	582	477	82%
BENZIE	96	64	67%	100	77	77%
BERRIEN	1,158	814	70%	1,110	790	71%
BRANCH	333	148	44%	314	164	52%
CALHOUN	1,056	751	71%	957	712	74%
CASS	326	180	55%	322	202	63%
CHARLEVOIX	129	103	80%	128	93	73%
CHEBOYGAN	181	130	72%	154	105	68%
CHIPPEWA	223	161	72%	188	140	74%
CLARE	231	155	67%	195	115	59%
CLINTON	266	173	65%	251	173	69%
CRAWFORD	65	39	60%	60	36	60%
DELTA	198	141	71%	203	162	80%
DICKINSON	148	119	80%	121	100	83%
EATON	455	313	69%	438	315	72%
EMMET	175	116	66%	181	120	66%
GENESEE	3,280	1,935	59%	3,114	2,251	72%
GLADWIN	142	111	78%	130	87	67%
GOGEBIC	90	56	62%	70	55	79%
GRAND TRAVERSE	426	201	47%	400	165	41%
GRATIOT	265	141	53%	253	180	71%
HILLSDALE	310	187	60%	274	194	71%
HOUGHTON	196	139	71%	181	141	78%
HURON	171	132	77%	173	138	80%
INGHAM	1,629	1,202	74%	1,479	1,201	81%
IONIA	368	199	54%	370	244	66%
IOSCO	143	105	73%	143	113	79%
IRON	61	50	82%	48	36	75%
ISABELLA	312	186	60%	325	209	64%
JACKSON	1,049	719	69%	928	741	80%
KALAMAZOO	1,435	1,033	72%	1,361	1,018	75%
KALKASKA	137	86	63%	136	79	58%
KENT	4,199	3,011	72%	3,754	2,979	79%
KEWEENAW	7	6	86%	7	4	57%

County	2 Years of Age			3 Years of Age		
	Eligibles	Eligibles with at least 1 test on or before their 2nd birthday	Percent of Eligibles with at least 1 test on or before their 2nd birthday	Eligibles	Eligibles with at least 1 test on or before their 3rd birthday	Percent of Eligibles with at least 1 test on or before their 3rd birthday
LAKE	82	48	59%	93	60	65%
LAPEER	420	241	57%	399	285	71%
LEELANAU	56	32	57%	58	32	55%
LENAWEE	588	415	71%	529	400	76%
LIVINGSTON	454	267	59%	480	254	53%
LUCE	33	27	82%	38	36	95%
MACKINAC	52	43	83%	49	44	90%
MACOMB	3,610	1,975	55%	3,404	2,021	59%
MANISTEE	115	90	78%	112	86	77%
MARQUETTE	283	203	72%	267	217	81%
MASON	214	151	71%	194	122	63%
MECOSTA	268	197	74%	257	186	72%
MENOMINEE	107	78	73%	90	70	78%
MIDLAND	373	130	35%	320	185	58%
MISSAUKEE	98	65	66%	72	45	63%
MONROE	695	457	66%	646	442	68%
MONTCALM	418	241	58%	399	286	72%
MONTMORENCY	47	33	70%	52	37	71%
MUSKEGON	1,439	863	60%	1,343	975	73%
NEWAYGO	323	201	62%	351	251	72%
OAKLAND	3,767	2,331	62%	3,588	2,485	69%
OCEANA	270	176	65%	277	198	71%
OGEMAW	142	112	79%	120	94	78%
ONTONAGON	31	22	71%	31	23	74%
OSCEOLA	159	89	56%	130	71	55%
OSCODA	53	43	81%	48	36	75%
OTSEGO	179	127	71%	144	79	55%
OTTAWA	1,201	606	50%	1,146	648	57%
PRESQUE ISLE	52	42	81%	42	28	67%
ROSCOMMON	132	94	71%	148	82	55%
SAGINAW	1,386	1,014	73%	1,316	1,088	83%
ST CLAIR	977	601	62%	936	596	64%
ST JOSEPH	510	266	52%	515	312	61%
SANILAC	254	184	72%	255	190	75%
SCHOOLCRAFT	39	32	82%	45	39	87%
SHIAWASSEE	411	298	73%	410	321	78%
TUSCOLA	303	230	76%	344	285	83%
VAN BUREN	593	346	58%	551	347	63%
WASHTENAW	1,228	587	48%	1,145	688	60%
DETROIT, CITY OF	9,392	6,351	68%	9,136	7,245	79%
WAYNE, ex Detroit	5,376	3,072	57%	5,122	3,528	69%
WEXFORD	276	180	65%	281	176	63%
<b>MICHIGAN</b>	<b>57,840</b>	<b>36,961</b>	<b>64%</b>	<b>54,775</b>	<b>39,250</b>	<b>72%</b>

**Table 5. Statewide Blood Lead Testing of Two and Three Year Old Children Enrolled in Managed Care  
July 2009**

County	2 Years of Age			3 Years of Age		
	Eligibles	Eligibles with at least 1 test on or before their 2nd birthday	Percent of Eligibles with at least 1 test on or before their 2nd birthday	Eligibles	Eligibles with at least 1 test on or before their 3rd birthday	Percent of Eligibles with at least 1 test on or before their 3rd birthday
ALCONA	39	30	77%	32	29	91%
ALGER	27	22	81%	32	27	84%
ALLEGAN	538	347	64%	494	346	70%
ALPENA	137	108	79%	128	101	79%
ANTRIM	108	77	71%	90	65	72%
ARENAC	72	50	69%	78	58	74%
BARAGA	24	14	58%	32	25	78%
BARRY	179	129	72%	133	102	77%
BAY	524	403	77%	479	406	85%
BENZIE	74	55	74%	78	63	81%
BERRIEN	960	700	73%	920	667	73%
BRANCH	271	130	48%	238	138	58%
CALHOUN	899	644	72%	808	607	75%
CASS	251	147	59%	256	165	64%
CHARLEVOIX	58	48	83%	37	22	59%
CHEBOYGAN	62	38	61%	64	43	67%
CHIPPEWA	129	93	72%	110	80	73%
CLARE	87	56	64%	67	37	55%
CLINTON	202	138	68%	184	131	71%
CRAWFORD	49	27	55%	42	27	64%
DELTA	151	112	74%	154	125	81%
DICKINSON	117	92	79%	97	80	82%
EATON	340	245	72%	331	239	72%
EMMET	2	1	50%	1	1	100%
GENESEE	2,806	1,692	60%	2,655	1,953	74%
GLADWIN	106	85	80%	102	70	69%
GOGEBIC	69	46	67%	52	43	83%
GRAND TRAVERSE	169	79	47%	132	59	45%
GRATIOT	211	121	57%	206	146	71%
HILLSDALE	254	159	63%	224	168	75%
HOUGHTON	164	115	70%	150	116	77%
HURON	135	106	79%	129	104	81%
INGHAM	1,341	1,007	75%	1,252	1,032	82%
IONIA	283	159	56%	260	167	64%
IOSCO	122	91	75%	119	96	81%
IRON	51	44	86%	41	32	78%
ISABELLA	252	151	60%	249	167	67%
JACKSON	855	601	70%	754	616	82%
KALAMAZOO	1,198	879	73%	1,120	859	77%
KALKASKA	10	5	50%	14	9	64%
KENT	3,468	2,564	74%	3,106	2,512	81%
KEWEENAW	5	5	100%	5	4	80%

County	2 Years of Age			3 Years of Age		
	Eligibles	Eligibles with at least 1 test on or before their 2nd birthday	Percent of Eligibles with at least 1 test on or before their 2nd birthday	Eligibles	Eligibles with at least 1 test on or before their 3rd birthday	Percent of Eligibles with at least 1 test on or before their 3rd birthday
LAKE	64	39	61%	74	47	64%
LAPEER	338	205	61%	313	236	75%
LEELANAU	14	6	43%	12	9	75%
LENAWEE	471	343	73%	418	325	78%
LIVINGSTON	354	213	60%	392	224	57%
LUCE	24	19	79%	29	27	93%
MACKINAC	29	24	83%	23	20	87%
MACOMB	2,930	1,687	58%	2,720	1,682	62%
MANISTEE	89	71	80%	90	71	79%
MARQUETTE	231	171	74%	207	174	84%
MASON	172	121	70%	163	104	64%
MECOSTA	219	164	75%	201	152	76%
MENOMINEE	74	54	73%	62	50	81%
MIDLAND	142	51	36%	119	65	55%
MISSAUKEE	78	54	69%	58	35	60%
MONROE	547	378	69%	514	349	68%
MONTCALM	327	203	62%	299	222	74%
MONTMORENCY	33	24	73%	42	32	76%
MUSKEGON	1,197	740	62%	1,105	822	74%
NEWAYGO	265	171	65%	277	204	74%
OAKLAND	3,162	2,021	64%	2,962	2,114	71%
OCEANA	200	138	69%	218	157	72%
OGEMAW	118	95	81%	102	81	79%
ONTONAGON	25	19	76%	25	19	76%
OSCEOLA	119	66	55%	96	50	52%
OSCODA	40	35	88%	40	32	80%
OTSEGO	135	103	76%	105	64	61%
OTTAWA	889	463	52%	809	479	59%
PRESQUE ISLE	45	38	84%	35	24	69%
ROSCOMMON	109	78	72%	126	76	60%
SAGINAW	1,184	893	75%	1,144	959	84%
ST CLAIR	792	523	66%	775	504	65%
ST JOSEPH	419	226	54%	415	254	61%
SANILAC	209	154	74%	206	157	76%
SCHOOLCRAFT	35	29	83%	37	32	86%
SHIAWASSEE	336	253	75%	319	260	82%
TUSCOLA	233	177	76%	262	224	85%
VAN BUREN	444	263	59%	424	278	66%
WASHTENAW	1,061	504	48%	983	610	62%
DETROIT, CITY OF	8,166	5,570	68%	7,964	6,370	80%
WAYNE, ex Detroit	4,444	2,621	59%	4,258	3,007	71%
WEXFORD	108	71	66%	103	66	64%
<b>MICHIGAN</b>	<b>46,670</b>	<b>30,693</b>	<b>66%</b>	<b>43,981</b>	<b>32,404</b>	<b>74%</b>

**Table 6. Statewide Blood Lead Testing of Two and Three Year Old Children Eligible for Medicaid Only Fee-for-Service Coverage  
July 2009**

County	2 Years of Age			3 Years of Age		
	Eligibles	Eligibles with at least 1 test on or before their 2nd birthday	Percent of Eligibles with at least 1 test on or before their 2nd birthday	Eligibles	Eligibles with at least 1 test on or before their 3rd birthday	Percent of Eligibles with at least 1 test on or before their 3rd birthday
ALCONA	8	5	63%	7	5	71%
ALGER	11	10	91%	14	12	86%
ALLEGAN	152	60	39%	157	92	59%
ALPENA	26	17	65%	27	22	81%
ANTRIM	25	19	76%	18	10	56%
ARENAC	19	12	63%	15	11	73%
BARAGA	26	22	85%	22	19	86%
BARRY	133	89	67%	126	88	70%
BAY	86	53	62%	93	64	69%
BENZIE	18	8	44%	17	10	59%
BERRIEN	185	102	55%	179	114	64%
BRANCH	52	15	29%	70	23	33%
CALHOUN	134	92	69%	133	93	70%
CASS	67	29	43%	57	30	53%
CHARLEVOIX	66	53	80%	83	65	78%
CHEBOYGAN	112	87	78%	89	61	69%
CHIPPEWA	89	65	73%	75	58	77%
CLARE	138	96	70%	121	71	59%
CLINTON	59	32	54%	60	36	60%
CRAWFORD	15	11	73%	16	7	44%
DELTA	44	26	59%	45	34	76%
DICKINSON	28	24	86%	21	17	81%
EATON	109	64	59%	100	71	71%
EMMET	165	110	67%	176	116	66%
GENESEE	424	212	50%	411	266	65%
GLADWIN	31	22	71%	25	14	56%
GOGEBIC	21	10	48%	18	12	67%
GRAND TRAVERSE	254	121	48%	258	100	39%
GRATIOT	45	19	42%	43	31	72%
HILLSDALE	44	21	48%	43	21	49%
HOUGHTON	30	22	73%	26	20	77%
HURON	33	23	70%	41	31	76%
INGHAM	248	165	67%	198	145	73%
IONIA	75	34	45%	102	70	69%
IOSCO	20	13	65%	21	15	71%
IRON	10	6	60%	5	2	40%
ISABELLA	49	25	51%	70	39	56%
JACKSON	172	99	58%	145	100	69%
KALAMAZOO	198	122	62%	210	140	67%
KALKASKA	124	79	64%	120	68	57%
KENT	637	377	59%	573	407	71%
KEWEENAW	2	1	50%	2	0	0%

County	2 Years of Age			3 Years of Age		
	Eligibles	Eligibles with at least 1 test on or before their 2nd birthday	Percent of Eligibles with at least 1 test on or before their 2nd birthday	Eligibles	Eligibles with at least 1 test on or before their 3rd birthday	Percent of Eligibles with at least 1 test on or before their 3rd birthday
LAKE	16	7	44%	17	11	65%
LAPEER	74	30	41%	74	41	55%
LEELANAU	42	26	62%	46	23	50%
LENAWEE	112	68	61%	100	68	68%
LIVINGSTON	87	46	53%	81	27	33%
LUCE	8	7	88%	9	9	100%
MACKINAC	22	18	82%	25	23	92%
MACOMB	622	257	41%	610	299	49%
MANISTEE	21	14	67%	14	9	64%
MARQUETTE	48	30	63%	52	36	69%
MASON	39	27	69%	31	18	58%
MECOSTA	44	31	70%	50	29	58%
MENOMINEE	31	22	71%	27	19	70%
MIDLAND	223	77	35%	192	113	59%
MISSAUKEE	18	10	56%	12	9	75%
MONROE	129	69	53%	121	85	70%
MONTCALM	80	31	39%	87	53	61%
MONTMORENCY	9	4	44%	9	4	44%
MUSKEGON	215	107	50%	221	139	63%
NEWAYGO	47	22	47%	67	41	61%
OAKLAND	534	267	50%	556	324	58%
OCEANA	68	37	54%	56	40	71%
OGEMAW	19	12	63%	15	11	73%
ONTONAGON	4	1	25%	6	4	67%
OSCEOLA	31	17	55%	27	16	59%
OSCODA	12	7	58%	6	2	33%
OTSEGO	35	18	51%	29	9	31%
OTTAWA	291	130	45%	314	156	50%
PRESQUE ISLE	6	3	50%	7	4	57%
ROSCOMMON	18	11	61%	18	4	22%
SAGINAW	166	97	58%	158	118	75%
ST CLAIR	160	69	43%	147	83	56%
ST JOSEPH	77	36	47%	89	49	55%
SANILAC	41	27	66%	44	30	68%
SCHOOLCRAFT	4	3	75%	7	7	100%
SHIAWASSEE	65	38	58%	85	57	67%
TUSCOLA	58	44	76%	76	55	72%
VAN BUREN	140	77	55%	120	67	56%
WASHTENAW	138	65	47%	142	65	46%
DETROIT, CITY OF	1,049	657	63%	1,005	739	74%
WAYNE, ex Detroit	837	396	47%	772	452	59%
WEXFORD	162	104	64%	170	103	61%
<b>MICHIGAN</b>	<b>9,986</b>	<b>5,491</b>	<b>55%</b>	<b>9,726</b>	<b>6,061</b>	<b>62%</b>

**Table 7: Blood Lead Testing of Two Year Old Children by Length of Enrollment**  
**July 2009**

Health Plan Name	Total Enrollment			Continuous Enrollment			
	Eligibles	Eligibles with at least 1 test on or before their 2nd birthday	Percent of Eligibles with at least 1 test on or before their 2nd birthday	Eligibles	Eligibles with at least 1 test on or before their 2nd birthday	Percent of Eligibles with at least 1 test on or before their 2nd birthday	Percentage Point Difference with Continuous Enrollment
BlueCaid of Michigan	1,001	477	48%	547	308	56%	9
CareSource Michigan	1,874	1,287	69%	1,131	864	76%	8
Great Lakes Health Plan, Inc.	8,176	5,306	65%	4,615	3,308	72%	7
Health Plan of Michigan, Inc.	9,644	6,404	66%	4,782	3,737	78%	12
HealthPlus Partners, Inc.	2,997	2,026	68%	1,896	1,419	75%	7
McLaren Health Plan	2,987	2,007	67%	1,644	1,268	77%	10
Midwest Health Plan	2,733	1,741	64%	1,624	1,182	73%	9
Molina Healthcare of Michigan	8,673	5,588	64%	5,365	3,725	69%	5
OmniCare Health Plan	1,691	1,136	67%	1,042	748	72%	5
PHP MM Family Care	798	609	76%	453	374	83%	6
Priority Health Government Programs, Inc.	2,992	2,051	69%	1,693	1,297	77%	8
ProCare Health Plan	41	19	46%	3	3	100%	54
Total Health Care	1,938	1,198	62%	1,169	801	69%	7
Upper Peninsula Health Plan	1,152	858	74%	737	626	85%	10
<b>Managed Care Totals/Percent</b>	<b>46,697</b>	<b>30,707</b>	<b>66%</b>	<b>26,701</b>	<b>19,660</b>	<b>74%</b>	<b>8</b>
<b>Current Performance Monitoring Standard</b>			<b>N/A</b>			<b>75%</b>	
<b>FFS (Title XIX only)</b>	<b>9,998</b>	<b>5,494</b>	<b>55%</b>	<b>2,530</b>	<b>1,644</b>	<b>65%</b>	<b>10</b>
<b>FFS (Title V/XIX)</b>	<b>1,180</b>	<b>777</b>	<b>66%</b>	<b>960</b>	<b>641</b>	<b>67%</b>	<b>1</b>
<b>FFS Totals (Title XIX &amp; V/XIX)</b>	<b>11,178</b>	<b>6,271</b>	<b>56%</b>	<b>3,490</b>	<b>2,285</b>	<b>65%</b>	<b>9</b>

**Total Enrollment**

- Based on MMIS eligibility system
- Enrolled in plan (health plan or FFS) for the measurement month

**Continuous Enrollment**

- Based on MMIS eligibility system
- Enrolled in same plan (health plan or FFS) for the measurement month and 12 months preceding 2nd birthday, with 1-month allowable gap

**Table 8. Blood Lead Testing of Three Year Old Children by Length of Enrollment  
July 2009**

Health Plan Name	Total Enrollment			Continuous Enrollment			
	Eligibles	Eligibles with at least 1 test on or before their 3rd birthday	Percent of Eligibles with at least 1 test on or before their 3rd birthday	Eligibles	Eligibles with at least 1 test on or before their 3rd birthday	Percent of Eligibles with at least 1 test on or before their 3rd birthday	Percentage Point Difference with Continuous Enrollment
BlueCaid of Michigan	958	571	60%	532	370	70%	10
CareSource Michigan	1,761	1,282	73%	1,062	837	79%	6
Great Lakes Health Plan, Inc.	7,664	5,528	72%	4,298	3,388	79%	7
Health Plan of Michigan, Inc.	8,490	6,019	71%	4,148	3,380	81%	11
HealthPlus Partners, Inc.	2,728	2,159	79%	1,750	1,482	85%	6
McLaren Health Plan	3,012	2,288	76%	1,703	1,445	85%	9
Midwest Health Plan	2,574	1,865	72%	1,493	1,199	80%	8
Molina Healthcare of Michigan	8,558	6,413	75%	5,487	4,348	79%	4
OmniCare Health Plan	1,804	1,418	79%	1,171	975	83%	5
PHP MM Family Care	722	578	80%	438	379	87%	6
Priority Health Government Programs, Inc.	2,813	2,101	75%	1,620	1,363	84%	9
ProCare Health Plan	43	25	58%	N/A			
Total Health Care	1,812	1,310	72%	1,104	861	78%	6
Upper Peninsula Health Plan	1,059	857	81%	672	597	89%	8
<b>Managed Care Totals/Percent</b>	<b>43,998</b>	<b>32,414</b>	<b>74%</b>	<b>25,478</b>	<b>20,624</b>	<b>81%</b>	<b>7</b>
<b>FFS (Title XIX only)</b>	<b>9,732</b>	<b>6,061</b>	<b>62%</b>	<b>2,756</b>	<b>1,915</b>	<b>69%</b>	<b>7</b>
<b>FFS (Title V/XIX)</b>	<b>1,066</b>	<b>784</b>	<b>74%</b>	<b>974</b>	<b>739</b>	<b>76%</b>	<b>2</b>
<b>FFS Totals (Title XIX &amp; V/XIX)</b>	<b>10,798</b>	<b>6,845</b>	<b>63%</b>	<b>3,730</b>	<b>2,654</b>	<b>71%</b>	<b>8</b>

**Total Enrollment**

- Based on MMIS eligibility system
- Enrolled in plan (health plan or FFS) for the measurement month

**Continuous Enrollment**

- Based on MMIS eligibility system
- Enrolled in same plan (health plan or FFS) for the measurement month and 12 months preceding 3rd birthday, with 1-month allowable gap