

MEDICAID BLOOD LEAD TESTING

*Michigan Department
of Community Health*



September 2009

Blood Lead Testing Methodology

- **Children must have been eligible for one of the following programs in September 2009**
 - Medicaid Managed Care (MC)
 - enrolled in a Medicaid Health Plan (MHP)
 - Medicaid Fee-for-Service (FFS)
 - enrolled for Medicaid Only FFS coverage
 - Medicaid and CSHCS Dual Eligible (Duals)
 - dually eligible for both Medicaid and CSHCS
- **Blood Lead testing results include children tested:**
 - on or before indicated birthday for 2 and 3 year olds
 - at any time between ages 1 to 6
- **Unique Client Identifier (UCI) used to establish link between Medicaid and lead databases.**

Blood Lead Testing Summary

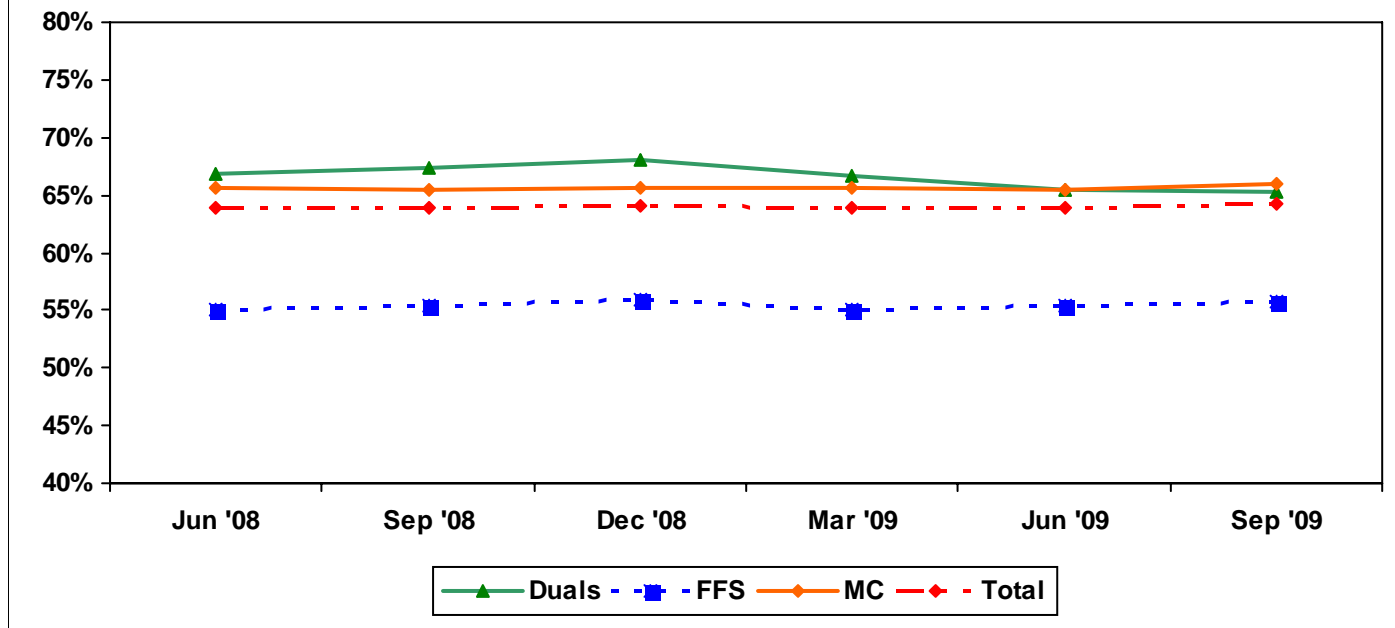
- **2 year old children tested on or before their 2nd birthday**

- 64% Statewide
- 69% City of Detroit
- 66% Statewide for Medicaid MC
 - 74% Statewide for Medicaid MC with 12-Month Continuous Enrollment
- 56% Statewide for Medicaid Only FFS Eligibles
- 65% Statewide for CSHCS Duals

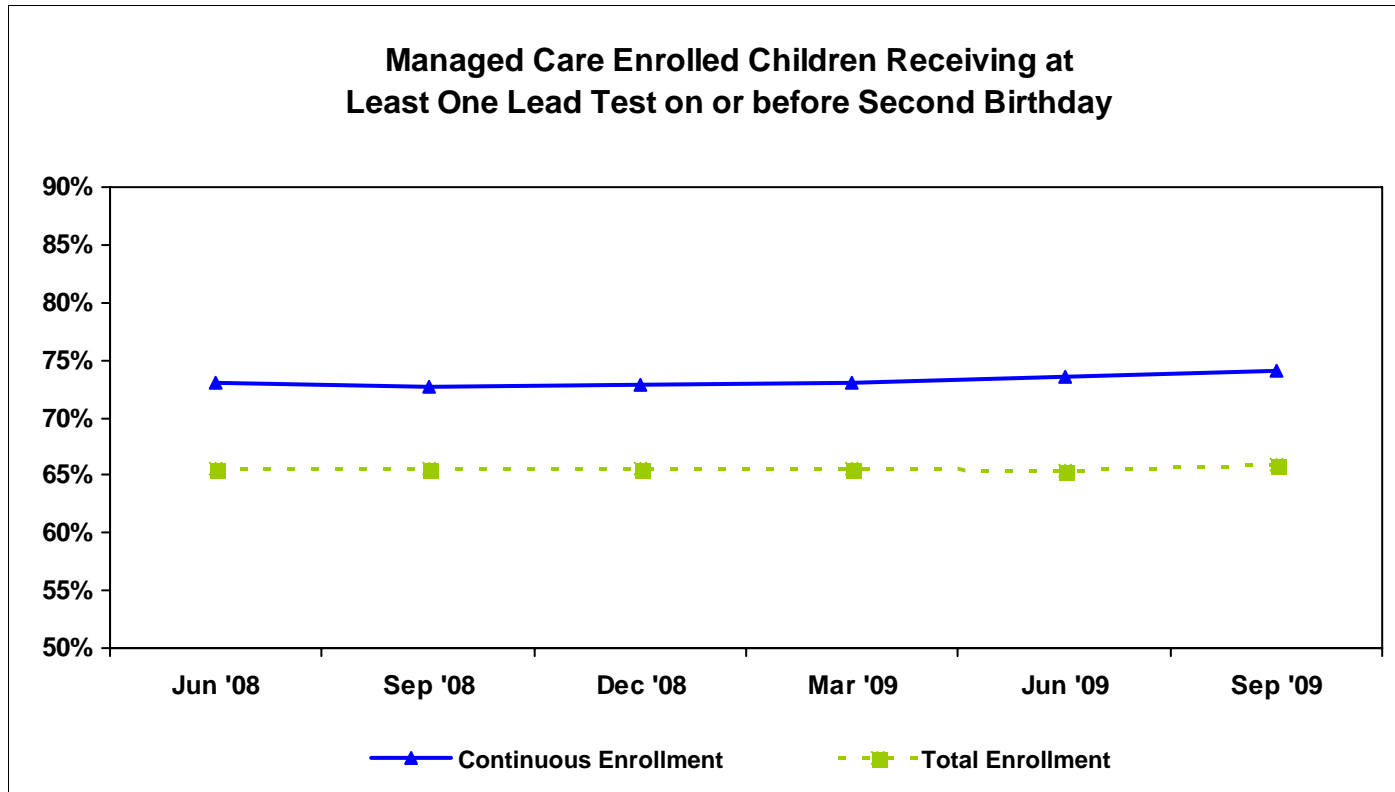
- **3 year old children tested on or before their 3rd birthday**

- 72% Statewide
- 80% City of Detroit
- 74% Statewide for Medicaid MC
 - 81% Statewide for Medicaid MC with 12-Month Continuous Enrollment
- 62% Statewide for Medicaid Only FFS Eligibles
- 73% Statewide for CSHCS Duals

Children Receiving at Least One Blood Lead Test on or before Second Birthday by Program Eligibility



Managed Care Enrolled Children Receiving at Least One Lead Test on or before Second Birthday



Total Enrollment

-Enrolled in measurement month

Continuous Enrollment

-Based on MMIS eligibility system

-Enrolled in same health plan for the measurement month and 12 months preceding 2nd birthday, with a 1-month allowable gap.

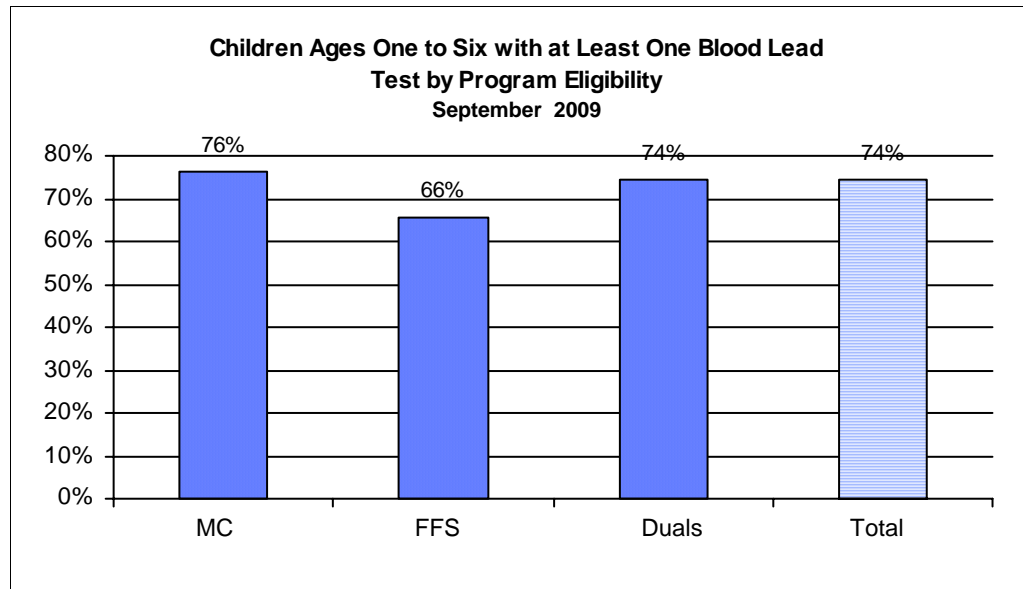
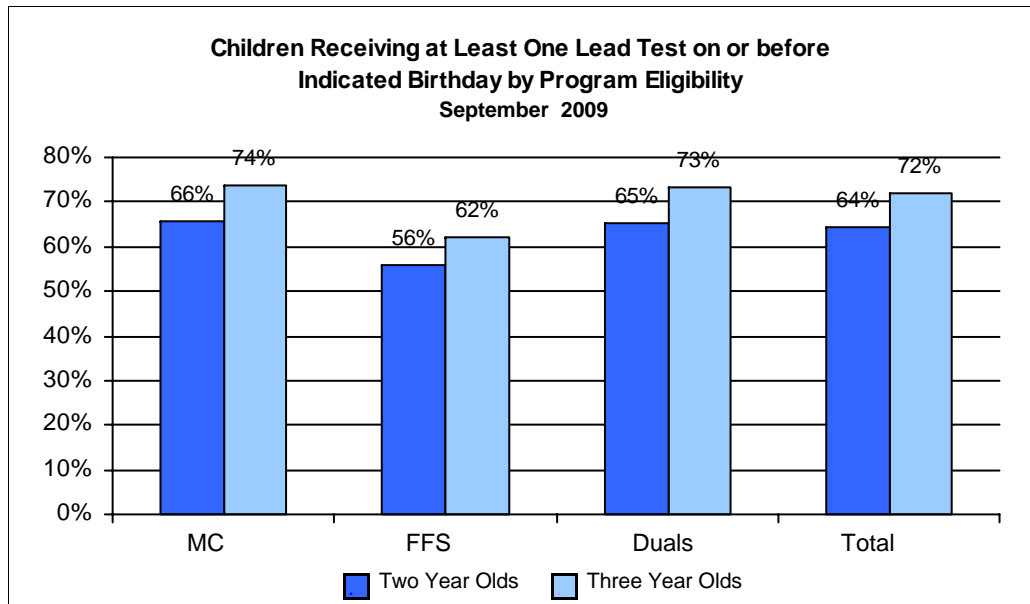


Table 1. Percent of Children with at Least One Blood Lead Test on or before their Second Birthday

Program	Sep-08	Oct-08	Nov-08	Dec-08	Jan-09	Feb-09	Mar-09	Apr-09	May-09	Jun-09	Jul-09	Aug-09	Sep-09
MC	65.5%	65.7%	65.4%	65.6%	65.5%	65.4%	65.6%	65.7%	65.7%	65.4%	65.8%	65.8%	65.9%
FFS	55.5%	55.7%	56.4%	55.9%	56.2%	56.0%	55.1%	55.6%	54.6%	55.3%	55.0%	55.4%	55.7%
Duals	67.4%	68.2%	67.5%	68.0%	67.5%	66.9%	66.6%	66.0%	65.7%	65.5%	65.6%	64.8%	65.2%
Total	63.9%	64.1%	64.1%	64.1%	64.1%	64.1%	63.9%	64.0%	63.7%	63.8%	63.9%	64.0%	64.2%

Table 2. Percent of Children with at Least One Blood Lead Test on or before their Third Birthday

Program	Sep-08	Oct-08	Nov-08	Dec-08	Jan-09	Feb-09	Mar-09	Apr-09	May-09	Jun-09	Jul-09	Aug-09	Sep-09
MC	74.3%	74.5%	74.1%	74.2%	74.0%	73.7%	73.6%	73.6%	73.6%	73.0%	73.7%	73.5%	73.8%
FFS	62.5%	61.8%	62.0%	62.5%	62.1%	63.1%	62.5%	63.2%	62.4%	62.5%	62.3%	62.7%	62.0%
Duals	70.0%	71.0%	71.1%	71.9%	72.9%	71.9%	71.8%	73.5%	73.3%	73.1%	73.5%	73.8%	73.4%
Total	72.2%	72.3%	72.1%	72.2%	72.1%	72.0%	71.6%	71.8%	71.5%	71.4%	71.7%	71.7%	71.8%

Table 3. Percent of Children Ages One to Six with at Least One Blood Lead Test

Program	Sep-08	Oct-08	Nov-08	Dec-08	Jan-09	Feb-09	Mar-09	Apr-09	May-09	Jun-09	Jul-09	Aug-09	Sep-09
MC	73.8%	74.1%	74.1%	74.1%	73.8%	73.4%	73.7%	73.8%	74.7%	75.0%	74.9%	75.7%	76.3%
FFS	64.1%	64.1%	64.2%	64.0%	64.1%	63.8%	63.2%	63.7%	64.5%	64.4%	64.7%	65.1%	65.6%
Duals	70.5%	70.8%	71.0%	71.3%	71.5%	71.2%	71.5%	71.7%	72.6%	72.9%	73.3%	73.6%	74.4%
Total	72.1%	72.4%	72.5%	72.4%	72.3%	71.9%	71.9%	72.0%	73.0%	73.1%	73.3%	73.8%	74.4%

**Table 4. Statewide Blood Lead Testing of Two and Three Year Old Children for All Programs
September 2009**

County	2 Years of Age			3 Years of Age		
	Eligibles	Eligibles with at least 1 test on or before their 2nd birthday	Percent of Eligibles with at least 1 test on or before their 2nd birthday	Eligibles	Eligibles with at least 1 test on or before their 3rd birthday	Percent of Eligibles with at least 1 test on or before their 3rd birthday
ALCONA	40	30	75%	40	32	80%
ALGER	50	42	84%	39	33	85%
ALLEGAN	748	429	57%	686	462	67%
ALPENA	160	124	78%	159	123	77%
ANTRIM	137	99	72%	115	82	71%
ARENAC	93	63	68%	90	68	76%
BARAGA	50	40	80%	54	44	81%
BARRY	303	222	73%	262	180	69%
BAY	621	458	74%	600	495	83%
BENZIE	95	61	64%	102	77	75%
BERRIEN	1,174	811	69%	1,127	791	70%
BRANCH	342	147	43%	307	161	52%
CALHOUN	1,059	750	71%	935	701	75%
CASS	333	180	54%	319	194	61%
CHARLEVOIX	137	105	77%	134	93	69%
CHEBOYGAN	174	126	72%	157	109	69%
CHIPPEWA	212	154	73%	203	150	74%
CLARE	232	164	71%	198	111	56%
CLINTON	260	173	67%	255	180	71%
CRAWFORD	78	42	54%	67	41	61%
DELTA	191	133	70%	205	162	79%
DICKINSON	159	126	79%	122	102	84%
EATON	470	323	69%	414	299	72%
EMMET	152	108	71%	186	123	66%
GENESEE	3,324	1,898	57%	3,195	2,306	72%
GLADWIN	140	107	76%	139	99	71%
GOGEBIC	91	54	59%	75	60	80%
GRAND TRAVERSE	422	222	53%	414	176	43%
GRATIOT	250	119	48%	263	191	73%
HILLSDALE	313	193	62%	284	200	70%
HOUGHTON	198	141	71%	189	140	74%
HURON	162	125	77%	184	144	78%
INGHAM	1,559	1,163	75%	1,502	1,220	81%
IONIA	376	204	54%	373	251	67%
IOSCO	150	107	71%	144	121	84%
IRON	57	43	75%	55	42	76%
ISABELLA	328	183	56%	318	207	65%
JACKSON	1,064	736	69%	950	727	77%
KALAMAZOO	1,453	1,072	74%	1,312	1,007	77%
KALKASKA	142	88	62%	130	72	55%
KENT	4,192	2,982	71%	3,876	3,067	79%
KEWEENAW	8	7	88%	6	3	50%

County	2 Years of Age			3 Years of Age		
	Eligibles	Eligibles with at least 1 test on or before their 2nd birthday	Percent of Eligibles with at least 1 test on or before their 2nd birthday	Eligibles	Eligibles with at least 1 test on or before their 3rd birthday	Percent of Eligibles with at least 1 test on or before their 3rd birthday
LAKE	78	45	58%	87	53	61%
LAPEER	418	238	57%	409	292	71%
LEELANAU	62	33	53%	52	30	58%
LENAWEE	609	433	71%	528	405	77%
LIVINGSTON	481	270	56%	483	260	54%
LUCE	35	30	86%	37	35	95%
MACKINAC	47	37	79%	57	50	88%
MACOMB	3,525	1,946	55%	3,450	2,066	60%
MANISTEE	117	85	73%	122	98	80%
MARQUETTE	292	222	76%	265	207	78%
MASON	207	151	73%	205	133	65%
MECOSTA	265	195	74%	267	202	76%
MENOMINEE	119	88	74%	87	66	76%
MIDLAND	350	120	34%	339	203	60%
MISSAUKEE	92	58	63%	93	57	61%
MONROE	702	476	68%	659	453	69%
MONTCALM	419	250	60%	406	285	70%
MONTMORENCY	53	36	68%	54	39	72%
MUSKEGON	1,446	892	62%	1,345	957	71%
NEWAYGO	335	196	59%	348	249	72%
OAKLAND	3,775	2,410	64%	3,710	2,542	69%
OCEANA	270	182	67%	289	206	71%
OGEMAW	132	105	80%	127	105	83%
ONTONAGON	23	16	70%	38	33	87%
OSCEOLA	156	85	54%	137	76	55%
OSCODA	50	39	78%	46	37	80%
OTSEGO	189	126	67%	141	82	58%
OTTAWA	1,241	622	50%	1,184	681	58%
PRESQUE ISLE	58	45	78%	49	34	69%
ROSCOMMON	125	92	74%	138	80	58%
SAGINAW	1,423	1,030	72%	1,329	1,097	83%
ST CLAIR	1,007	641	64%	900	573	64%
ST JOSEPH	505	274	54%	521	297	57%
SANILAC	273	203	74%	275	208	76%
SCHOOLCRAFT	38	30	79%	48	45	94%
SHIAWASSEE	405	296	73%	415	324	78%
TUSCOLA	317	231	73%	336	272	81%
VAN BUREN	624	364	58%	609	384	63%
WASHTENAW	1,251	570	46%	1,159	701	60%
DETROIT, CITY OF	9,290	6,393	69%	9,021	7,234	80%
WAYNE, ex Detroit	5,335	3,108	58%	5,137	3,565	69%
WEXFORD	274	175	64%	268	172	64%
MICHIGAN	57,912	37,192	64%	55,355	39,734	72%

**Table 5. Statewide Blood Lead Testing of Two and Three Year Old Children Enrolled in Managed Care
September 2009**

County	2 Years of Age			3 Years of Age			County	2 Years of Age			3 Years of Age		
	Eligibles	Eligibles with at least 1 test on or before their 2nd birthday	Percent of Eligibles with at least 1 test on or before their 2nd birthday	Eligibles	Eligibles with at least 1 test on or before their 3rd birthday	Percent of Eligibles with at least 1 test on or before their 3rd birthday		Eligibles	Eligibles with at least 1 test on or before their 2nd birthday	Percent of Eligibles with at least 1 test on or before their 2nd birthday	Eligibles	Eligibles with at least 1 test on or before their 3rd birthday	Percent of Eligibles with at least 1 test on or before their 3rd birthday
ALCONA	35	27	77%	34	29	85%	LAKE	62	35	56%	75	44	59%
ALGER	42	35	83%	28	25	89%	LAPEER	336	204	61%	327	246	75%
ALLEGAN	550	332	60%	518	366	71%	LEELANAU	18	9	50%	10	6	60%
ALPENA	136	108	79%	126	98	78%	LENAWEE	491	364	74%	425	331	78%
ANTRIM	111	85	77%	92	69	75%	LIVINGSTON	376	224	60%	397	233	59%
ARENAC	73	48	66%	71	52	73%	LUCE	26	22	85%	28	27	96%
BARAGA	27	19	70%	27	21	78%	MACKINAC	29	23	79%	27	23	85%
BARRY	179	136	76%	145	106	73%	MACOMB	2,969	1,690	57%	2,853	1,764	62%
BAY	526	404	77%	502	422	84%	MANISTEE	86	67	78%	94	78	83%
BENZIE	72	51	71%	77	59	77%	MARQUETTE	241	185	77%	207	166	80%
BERRIEN	970	703	72%	913	661	72%	MASON	166	123	74%	168	111	66%
BRANCH	273	125	46%	246	139	57%	MECOSTA	223	168	75%	215	169	79%
CALHOUN	876	624	71%	780	594	76%	MENOMINEE	84	64	76%	65	50	77%
CASS	262	151	58%	256	157	61%	MIDLAND	134	50	37%	137	82	60%
CHARLEVOIX	59	49	83%	38	19	50%	MISSAUKEE	71	46	65%	76	49	64%
CHEBOYGAN	62	42	68%	66	44	67%	MONROE	558	396	71%	534	373	70%
CHIPPEWA	127	90	71%	116	86	74%	MONTCALM	338	212	63%	307	225	73%
CLARE	86	60	70%	67	31	46%	MONTMORENCY	37	26	70%	45	33	73%
CLINTON	199	141	71%	199	144	72%	MUSKEGON	1,224	775	63%	1,128	821	73%
CRAWFORD	63	32	51%	50	28	56%	NEWAYGO	263	156	59%	280	203	73%
DELTA	152	109	72%	162	131	81%	OAKLAND	3,155	2,081	66%	3,097	2,196	71%
DICKINSON	123	99	80%	99	84	85%	OCEANA	199	140	70%	220	159	72%
EATON	364	259	71%	330	241	73%	OGEMAW	108	86	80%	109	90	83%
EMMET	0	0	NA	1	0	0%	ONTONAGON	19	13	68%	32	27	84%
GENESEE	2,848	1,669	59%	2,725	2,001	73%	OSCEOLA	118	66	56%	101	55	54%
GLADWIN	105	81	77%	106	77	73%	OSCODA	40	35	88%	39	34	87%
GOGEBIC	73	46	63%	57	45	79%	OTSEGO	155	105	68%	105	66	63%
GRAND TRAVERSE	160	89	56%	149	70	47%	OTTAWA	928	483	52%	845	515	61%
GRATIOT	194	100	52%	206	157	76%	PRESQUE ISLE	47	37	79%	37	27	73%
HILLSDALE	262	171	65%	235	176	75%	ROSCOMMON	108	80	74%	108	70	65%
HOUGHTON	166	120	72%	155	110	71%	SAGINAW	1,209	897	74%	1,133	947	84%
HURON	132	100	76%	133	110	83%	ST CLAIR	821	545	66%	739	489	66%
INGHAM	1,301	986	76%	1,298	1,069	82%	ST JOSEPH	414	230	56%	415	242	58%
IONIA	297	164	55%	269	183	68%	SANILAC	220	171	78%	216	163	75%
IOSCO	125	88	70%	128	108	84%	SCHOOLCRAFT	30	25	83%	40	37	93%
IRON	48	38	79%	44	35	80%	SHIAWASSEE	343	255	74%	336	272	81%
ISABELLA	251	142	57%	246	167	68%	TUSCOLA	248	184	74%	263	219	83%
JACKSON	861	619	72%	778	620	80%	VAN BUREN	451	275	61%	455	304	67%
KALAMAZOO	1,209	904	75%	1,095	846	77%	WASHTENAW	1,064	498	47%	992	618	62%
KALKASKA	11	6	55%	15	9	60%	DETROIT, CITY OF	8,261	5,727	69%	8,060	6,506	81%
KENT	3,441	2,498	73%	3,154	2,537	80%	WAYNE, ex Detroit	4,573	2,719	59%	4,409	3,118	71%
KEWEENAW	8	7	88%	5	3	60%	WEXFORD	111	75	68%	96	65	68%
MICHIGAN	47,213	31,123	66%	44,986	33,182	74%							

**Table 6. Statewide Blood Lead Testing of Two and Three Year Old Children Eligible for Medicaid Only Fee-for-Service Coverage
September 2009**

County	2 Years of Age			3 Years of Age			County	2 Years of Age			3 Years of Age		
	Eligibles	Eligibles with at least 1 test on or before their 2nd birthday	Percent of Eligibles with at least 1 test on or before their 2nd birthday	Eligibles	Eligibles with at least 1 test on or before their 3rd birthday	Percent of Eligibles with at least 1 test on or before their 3rd birthday		Eligibles	Eligibles with at least 1 test on or before their 2nd birthday	Percent of Eligibles with at least 1 test on or before their 2nd birthday	Eligibles	Eligibles with at least 1 test on or before their 3rd birthday	Percent of Eligibles with at least 1 test on or before their 3rd birthday
ALCONA	5	3	60%	6	3	50%	LAKE	14	8	57%	10	7	70%
ALGER	6	5	83%	10	7	70%	LAPEER	74	28	38%	72	39	54%
ALLEGAN	183	87	48%	157	89	57%	LEELANAU	44	24	55%	42	24	57%
ALPENA	22	14	64%	27	20	74%	LENAWEE	109	64	59%	93	67	72%
ANTRIM	24	13	54%	17	9	53%	LIVINGSTON	93	39	42%	83	26	31%
ARENAC	19	14	74%	18	15	83%	LUCE	8	7	88%	9	8	89%
BARAGA	23	21	91%	26	23	88%	MACKINAC	16	13	81%	29	26	90%
BARRY	116	79	68%	110	67	61%	MACOMB	505	227	45%	527	266	50%
BAY	85	48	56%	88	66	75%	MANISTEE	27	14	52%	19	13	68%
BENZIE	18	9	50%	20	14	70%	MARQUETTE	47	35	74%	52	37	71%
BERRIEN	194	100	52%	199	118	59%	MASON	38	25	66%	36	22	61%
BRANCH	56	17	30%	56	19	34%	MECOSTA	38	26	68%	49	31	63%
CALHOUN	156	111	71%	143	98	69%	MENOMINEE	33	22	67%	21	15	71%
CASS	67	27	40%	54	31	57%	MIDLAND	208	69	33%	193	114	59%
CHARLEVOIX	74	54	73%	89	69	78%	MISSAUKEE	19	11	58%	15	7	47%
CHEBOYGAN	108	82	76%	89	63	71%	MONROE	127	66	52%	112	73	65%
CHIPPEWA	82	62	76%	81	60	74%	MONTCALM	72	32	44%	90	52	58%
CLARE	142	103	73%	124	74	60%	MONTMORENCY	11	5	45%	6	4	67%
CLINTON	55	29	53%	50	31	62%	MUSKEGON	193	100	52%	202	123	61%
CRAWFORD	12	7	58%	15	11	73%	NEWAYGO	60	33	55%	62	41	66%
DELTA	33	18	55%	39	28	72%	OAKLAND	549	286	52%	547	304	56%
DICKINSON	33	24	73%	20	15	75%	OCEANA	68	40	59%	66	46	70%
EATON	102	62	61%	75	51	68%	OGEMAW	18	14	78%	15	12	80%
EMMET	145	102	70%	179	119	66%	ONTONAGON	3	2	67%	5	5	100%
GENESEEE	431	202	47%	420	267	64%	OSCEOLA	28	12	43%	30	17	57%
GLADWIN	31	22	71%	27	18	67%	OSCODA	10	4	40%	6	2	33%
GOGEBIC	18	8	44%	18	15	83%	OTSEGO	28	18	64%	26	10	38%
GRAND TRAVERSE	262	133	51%	254	99	39%	OTTAWA	293	130	44%	317	153	48%
GRATIOT	48	17	35%	49	30	61%	PRESQUE ISLE	10	7	70%	12	7	58%
HILLSDALE	42	17	40%	44	20	45%	ROSCOMMON	11	7	64%	25	8	32%
HOUGHTON	32	21	66%	28	24	86%	SAGINAW	179	110	61%	174	133	76%
HURON	28	23	82%	47	30	64%	ST CLAIR	161	85	53%	145	77	53%
INGHAM	215	145	67%	173	128	74%	ST JOSEPH	77	39	51%	89	44	49%
IONIA	69	34	49%	97	62	64%	SANILAC	51	31	61%	53	41	77%
IOSCO	24	18	75%	13	11	85%	SCHOOLCRAFT	8	5	63%	8	8	100%
IRON	8	4	50%	9	5	56%	SHIAWASSEE	53	33	62%	73	49	67%
ISABELLA	65	32	49%	63	34	54%	TUSCOLA	57	38	67%	66	46	70%
JACKSON	183	100	55%	143	81	57%	VAN BUREN	163	82	50%	146	77	53%
KALAMAZOO	202	135	67%	189	143	76%	WASHTENAW	156	56	36%	146	69	47%
KALKASKA	129	80	62%	113	61	54%	DETROIT, CITY OF	845	538	64%	810	605	75%
KENT	661	417	63%	638	457	72%	WAYNE, ex Detroit	679	339	50%	634	371	59%
KEWEENAW	0	0	NA	1	0	0%	WEXFORD	158	96	61%	163	100	61%
MICHIGAN	9,549	5,319	56%	9,296	5,764	62%							

**Table 7: Blood Lead Testing of Two Year Old Children by Length of Enrollment
September 2009**

Health Plan Name	Total Enrollment			Continuous Enrollment			
	Eligibles	Eligibles with at least 1 test on or before their 2nd birthday	Percent of Eligibles with at least 1 test on or before their 2nd birthday	Eligibles	Eligibles with at least 1 test on or before their 2nd birthday	Percent of Eligibles with at least 1 test on or before their 2nd birthday	Percentage Point Difference with Continuous Enrollment
BlueCaid of Michigan	977	452	46%	485	261	54%	8
CareSource Michigan	1,859	1,307	70%	1,006	787	78%	8
Great Lakes Health Plan, Inc.	8,444	5,566	66%	4,258	3,093	73%	7
Health Plan of Michigan, Inc.	9,901	6,619	67%	4,387	3,483	79%	13
HealthPlus Partners, Inc.	3,015	1,990	66%	1,738	1,276	73%	7
McLaren Health Plan	3,038	2,032	67%	1,512	1,154	76%	9
Midwest Health Plan	2,838	1,829	64%	1,535	1,133	74%	9
Molina Healthcare of Michigan	8,582	5,521	64%	4,740	3,294	69%	5
OmniCare Health Plan	1,735	1,193	69%	947	696	73%	5
PHP MM Family Care	776	590	76%	401	331	83%	7
Priority Health Government Programs, Inc.	2,975	1,969	66%	1,512	1,140	75%	9
ProCare Health Plan	66	22	33%	5	3	60%	27
Total Health Care	1,868	1,169	63%	1,029	711	69%	7
Upper Peninsula Health Plan	1,196	896	75%	671	573	85%	10
Managed Care Totals/Percent	47,270	31,155	66%	24,226	17,935	74%	8
Current Performance Monitoring Standard			N/A			75%	
FFS (Title XIX only)	9,567	5,327	56%	2,386	1,566	66%	10
FFS (Title V/XIX)	1,142	747	65%	923	615	67%	1
FFS Totals (Title XIX & V/XIX)	10,709	6,074	57%	3,309	2,181	66%	9

Total Enrollment

- Based on MMIS eligibility system
- Enrolled in plan (health plan or FFS) for the measurement month

Continuous Enrollment

- Based on MMIS eligibility system
- Enrolled in same plan (health plan or FFS) for the measurement month and 12 months preceding 2nd birthday, with 1-month allowable gap

**Table 8. Blood Lead Testing of Three Year Old Children by Length of Enrollment
September 2009**

Health Plan Name	Total Enrollment			Continuous Enrollment			
	Eligibles	Eligibles with at least 1 test on or before their 3rd birthday	Percent of Eligibles with at least 1 test on or before their 3rd birthday	Eligibles	Eligibles with at least 1 test on or before their 3rd birthday	Percent of Eligibles with at least 1 test on or before their 3rd birthday	Percentage Point Difference with Continuous Enrollment
BlueCaid of Michigan	968	585	60%	496	347	70%	10
CareSource Michigan	1,750	1,257	72%	955	757	79%	7
Great Lakes Health Plan, Inc.	7,892	5,699	72%	3,934	3,121	79%	7
Health Plan of Michigan, Inc.	9,013	6,337	70%	3,833	3,142	82%	12
HealthPlus Partners, Inc.	2,820	2,219	79%	1,619	1,380	85%	7
McLaren Health Plan	3,040	2,286	75%	1,554	1,312	84%	9
Midwest Health Plan	2,556	1,889	74%	1,342	1,083	81%	7
Molina Healthcare of Michigan	8,769	6,545	75%	4,997	3,979	80%	5
OmniCare Health Plan	1,789	1,407	79%	1,036	876	85%	6
PHP MM Family Care	740	605	82%	393	346	88%	6
Priority Health Government Programs, Inc.	2,810	2,107	75%	1,466	1,224	83%	9
ProCare Health Plan	45	27	60%	2	2	100%	40
Total Health Care	1,908	1,365	72%	1,033	802	78%	6
Upper Peninsula Health Plan	1,071	854	80%	617	537	87%	7
Managed Care Totals/Percent	45,171	33,182	73%	23,277	18,908	81%	8
FFS (Title XIX only)	9,318	5,771	62%	2,607	1,830	70%	8
FFS (Title V/XIX)	1,069	786	74%	951	724	76%	3
FFS Totals (Title XIX & V/XIX)	10,387	6,557	63%	3,558	2,554	72%	9

Total Enrollment

- Based on MMIS eligibility system
- Enrolled in plan (health plan or FFS) for the measurement month

Continuous Enrollment

- Based on MMIS eligibility system
- Enrolled in same plan (health plan or FFS) for the measurement month and 12 months preceding 3rd birthday, with 1-month allowable gap