

MEDICAID BLOOD LEAD TESTING

*Michigan Department
of Community Health*



August 2009

Blood Lead Testing Methodology

- **Children must have been eligible for one of the following programs in August 2009**
 - Medicaid Managed Care (MC)
 - enrolled in a Medicaid Health Plan (MHP)
 - Medicaid Fee-for-Service (FFS)
 - enrolled for Medicaid Only FFS coverage
 - Medicaid and CSHCS Dual Eligible (Duals)
 - dually eligible for both Medicaid and CSHCS
- **Blood Lead testing results include children tested:**
 - on or before indicated birthday for 2 and 3 year olds
 - at any time between ages 1 to 6
- **Unique Client Identifier (UCI) used to establish link between Medicaid and lead databases.**

Blood Lead Testing Summary

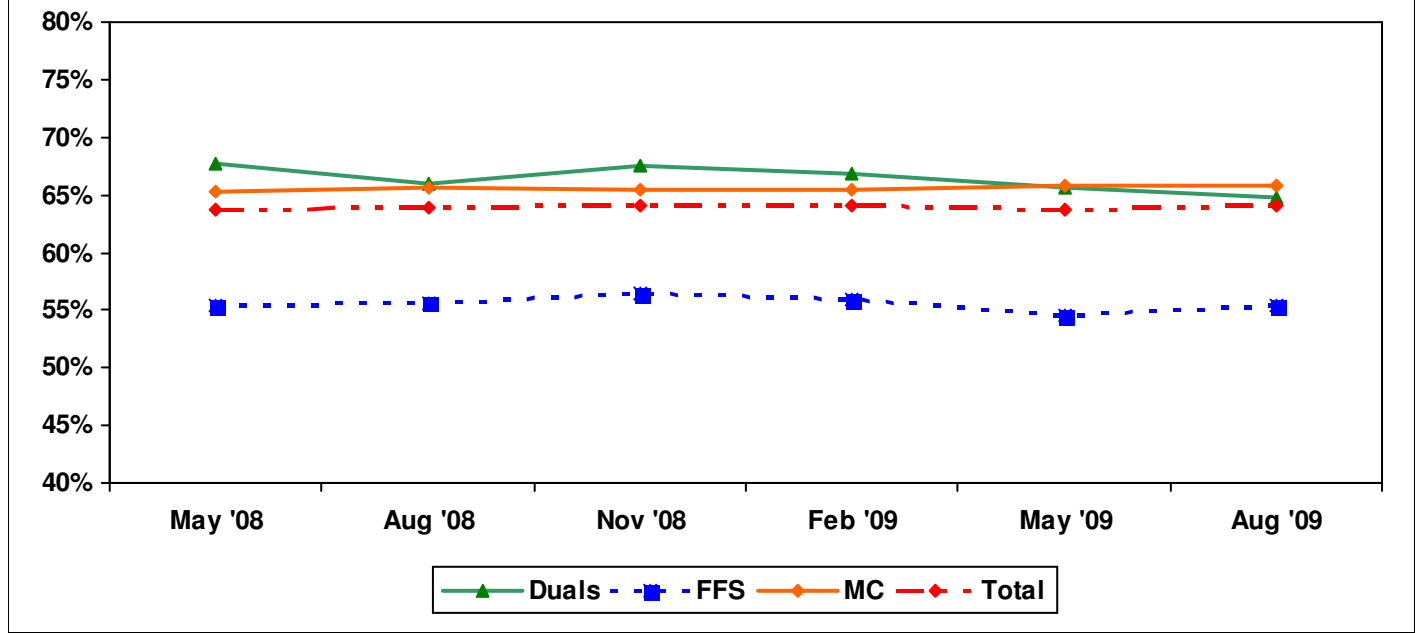
- **2 year old children tested on or before their 2nd birthday**

- 64% Statewide
- 69% City of Detroit
- 66% Statewide for Medicaid MC
 - 74% Statewide for Medicaid MC with 12-Month Continuous Enrollment
- 55% Statewide for Medicaid Only FFS Eligibles
- 65% Statewide for CSHCS Duals

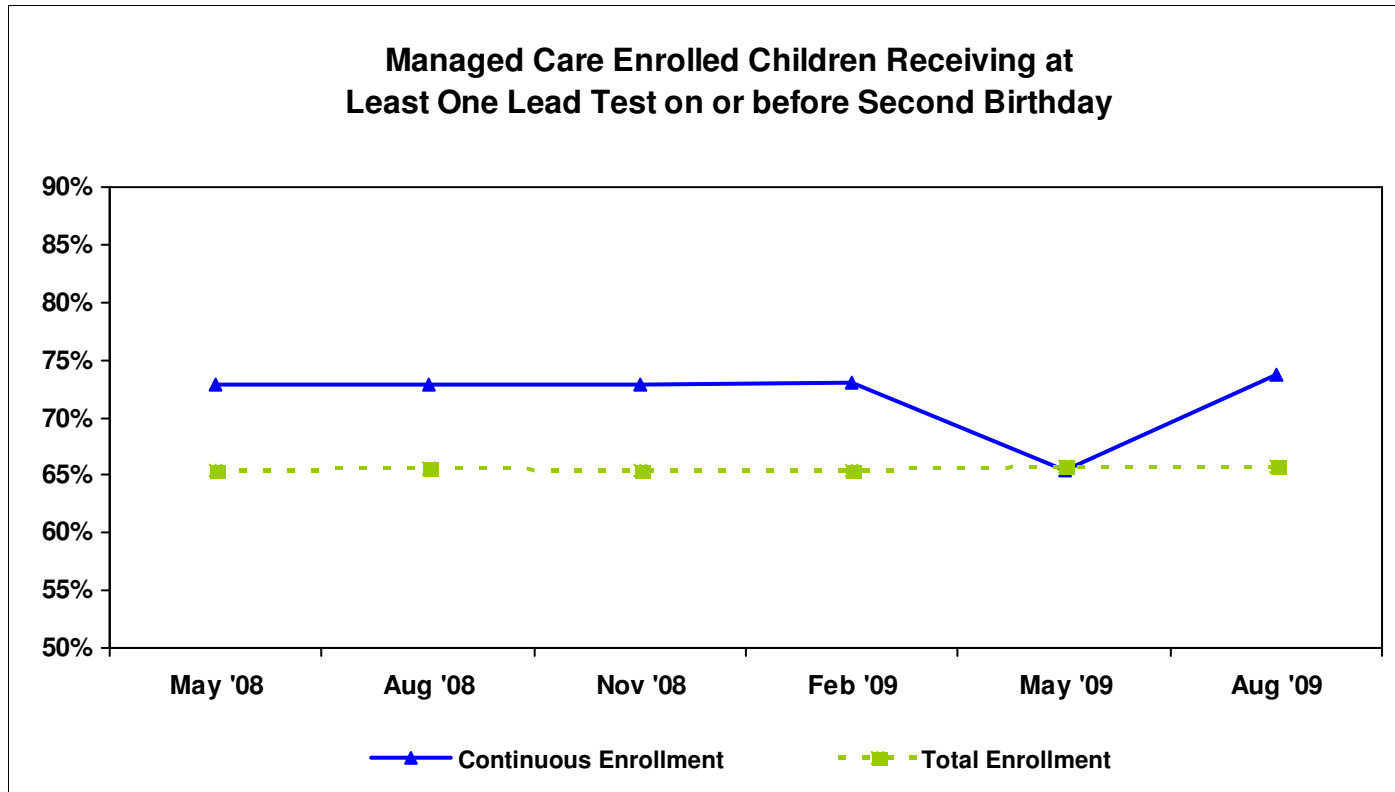
- **3 year old children tested on or before their 3rd birthday**

- 72% Statewide
- 80% City of Detroit
- 74% Statewide for Medicaid MC
 - 81% Statewide for Medicaid MC with 12-Month Continuous Enrollment
- 63% Statewide for Medicaid Only FFS Eligibles
- 74% Statewide for CSHCS Duals

Children Receiving at Least One Blood Lead Test on or before Second Birthday by Program Eligibility



Managed Care Enrolled Children Receiving at Least One Lead Test on or before Second Birthday



Total Enrollment

-Enrolled in measurement month

Continuous Enrollment

-Based on MMIS eligibility system

-Enrolled in same health plan for the measurement month and 12 months preceding 2nd birthday, with a 1-month allowable gap.

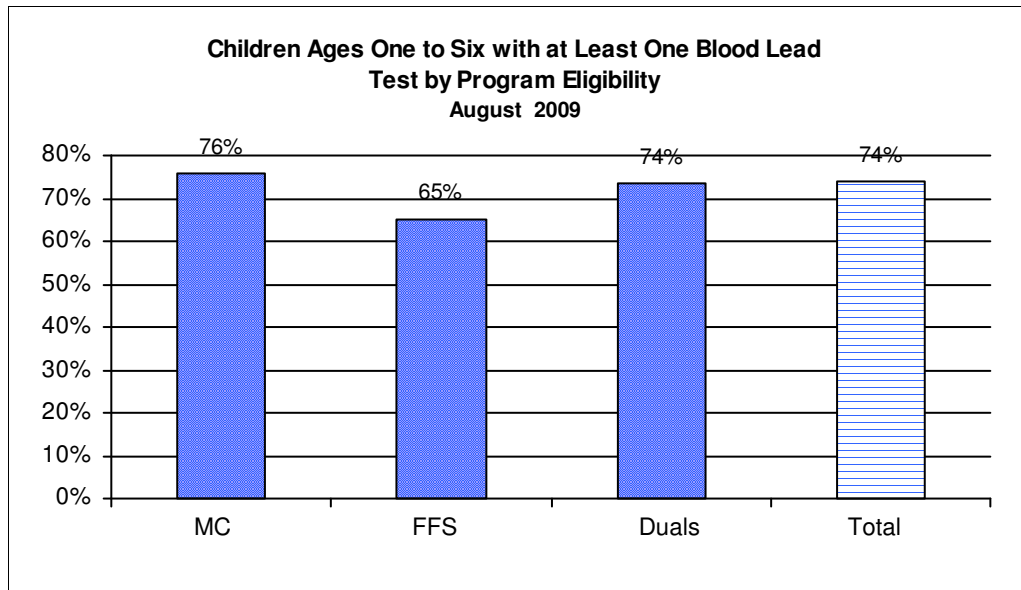
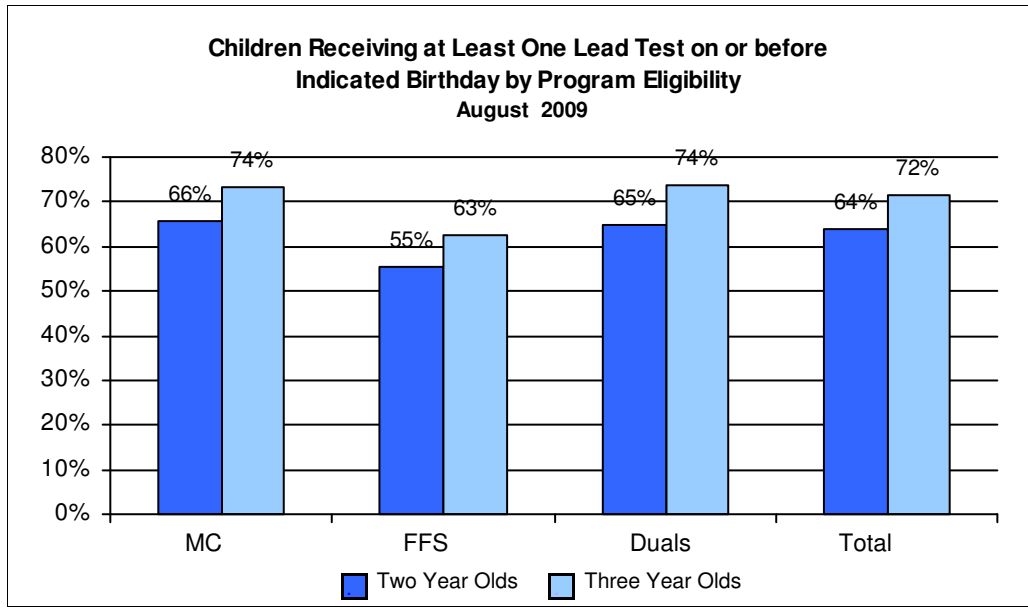


Table 1. Percent of Children with at Least One Blood Lead Test on or before their Second Birthday

Program	Aug-08	Sep-08	Oct-08	Nov-08	Dec-08	Jan-09	Feb-09	Mar-09	Apr-09	May-09	Jun-09	Jul-09	Aug-09
MC	65.6%	65.5%	65.7%	65.4%	65.6%	65.5%	65.4%	65.6%	65.7%	65.7%	65.4%	65.8%	65.8%
FFS	55.6%	55.5%	55.7%	56.4%	55.9%	56.2%	56.0%	55.1%	55.6%	54.6%	55.3%	55.0%	55.4%
Duals	65.9%	67.4%	68.2%	67.5%	68.0%	67.5%	66.9%	66.6%	66.0%	65.7%	65.5%	65.6%	64.8%
Total	64.0%	63.9%	64.1%	64.1%	64.1%	64.1%	64.1%	63.9%	64.0%	63.7%	63.8%	63.9%	64.0%

Table 2. Percent of Children with at Least One Blood Lead Test on or before their Third Birthday

Program	Aug-08	Sep-08	Oct-08	Nov-08	Dec-08	Jan-09	Feb-09	Mar-09	Apr-09	May-09	Jun-09	Jul-09	Aug-09
MC	74.2%	74.3%	74.5%	74.1%	74.2%	74.0%	73.7%	73.6%	73.6%	73.6%	73.0%	73.7%	73.5%
FFS	62.9%	62.5%	61.8%	62.0%	62.5%	62.1%	63.1%	62.5%	63.2%	62.4%	62.5%	62.3%	62.7%
Duals	70.4%	70.0%	71.0%	71.1%	71.9%	72.9%	71.9%	71.8%	73.5%	73.3%	73.1%	73.5%	73.8%
Total	72.2%	72.2%	72.3%	72.1%	72.2%	72.1%	72.0%	71.6%	71.8%	71.5%	71.4%	71.7%	71.7%

Table 3. Percent of Children Ages One to Six with at Least One Blood Lead Test

Program	Aug-08	Sep-08	Oct-08	Nov-08	Dec-08	Jan-09	Feb-09	Mar-09	Apr-09	May-09	Jun-09	Jul-09	Aug-09
MC	73.3%	73.8%	74.1%	74.1%	74.1%	73.8%	73.4%	73.7%	73.8%	74.7%	75.0%	74.9%	75.7%
FFS	63.7%	64.1%	64.1%	64.2%	64.0%	64.1%	63.8%	63.2%	63.7%	64.5%	64.4%	64.7%	65.1%
Duals	70.0%	70.5%	70.8%	71.0%	71.3%	71.5%	71.2%	71.5%	71.7%	72.6%	72.9%	73.3%	73.6%
Total	71.7%	72.1%	72.4%	72.5%	72.4%	72.3%	71.9%	71.9%	72.0%	73.0%	73.1%	73.3%	73.8%

Table 4. Statewide Blood Lead Testing of Two and Three Year Old Children for All Programs

August 2009

County	2 Years of Age			3 Years of Age		
	Eligibles	Eligibles with at least 1 test on or before their 2nd birthday	Percent of Eligibles with at least 1 test on or before their 2nd birthday	Eligibles	Eligibles with at least 1 test on or before their 3rd birthday	Percent of Eligibles with at least 1 test on or before their 3rd birthday
ALCONA	44	32	73%	43	37	86%
ALGER	45	38	84%	44	37	84%
ALLEGAN	739	431	58%	674	452	67%
ALPENA	166	129	78%	162	126	78%
ANTRIM	134	96	72%	115	80	70%
ARENAC	96	67	70%	93	68	73%
BARAGA	45	37	82%	58	44	76%
BARRY	303	213	70%	264	186	70%
BAY	610	458	75%	585	487	83%
BENZIE	92	60	65%	98	73	74%
BERRIEN	1,153	807	70%	1,127	796	71%
BRANCH	316	140	44%	331	169	51%
CALHOUN	1,058	755	71%	954	714	75%
CASS	327	180	55%	314	194	62%
CHARLEVOIX	138	106	77%	128	92	72%
CHEBOYGAN	183	132	72%	150	103	69%
CHIPPEWA	208	152	73%	193	145	75%
CLARE	236	158	67%	191	114	60%
CLINTON	270	177	66%	256	175	68%
CRAWFORD	72	43	60%	59	37	63%
DELTA	192	137	71%	203	163	80%
DICKINSON	152	122	80%	122	103	84%
EATON	466	310	67%	422	307	73%
EMMET	164	110	67%	186	125	67%
GENESEE	3,309	1,900	57%	3,154	2,273	72%
GLADWIN	148	113	76%	132	92	70%
GOGEBIC	93	56	60%	69	54	78%
GRAND TRAVERSE	428	212	50%	400	171	43%
GRATIOT	252	123	49%	261	187	72%
HILLSDALE	316	191	60%	263	185	70%
HOUGHTON	197	141	72%	190	141	74%
HURON	168	129	77%	172	135	78%
INGHAM	1,578	1,162	74%	1,507	1,223	81%
IONIA	369	198	54%	372	248	67%
IOSCO	152	110	72%	145	117	81%
IRON	64	50	78%	50	38	76%
ISABELLA	321	184	57%	325	212	65%
JACKSON	1,049	733	70%	956	741	78%
KALAMAZOO	1,431	1,044	73%	1,335	1,015	76%
KALKASKA	138	87	63%	134	74	55%
KENT	4,212	2,991	71%	3,791	2,992	79%
KEWEENAW	8	6	75%	7	4	57%

County	2 Years of Age			3 Years of Age		
	Eligibles	Eligibles with at least 1 test on or before their 2nd birthday	Percent of Eligibles with at least 1 test on or before their 2nd birthday	Eligibles	Eligibles with at least 1 test on or before their 3rd birthday	Percent of Eligibles with at least 1 test on or before their 3rd birthday
LAKE	82	47	57%	91	56	62%
LAPEER	411	229	56%	399	288	72%
LEELANAU	56	34	61%	50	26	52%
LENAWEE	609	428	70%	535	406	76%
LIVINGSTON	475	268	56%	462	245	53%
LUCE	34	29	85%	36	34	94%
MACKINAC	51	39	76%	55	51	93%
MACOMB	3,559	1,952	55%	3,422	2,050	60%
MANISTEE	124	94	76%	118	90	76%
MARQUETTE	284	211	74%	270	215	80%
MASON	210	150	71%	192	124	65%
MECOSTA	265	195	74%	270	200	74%
MENOMINEE	111	81	73%	94	73	78%
MIDLAND	361	127	35%	343	200	58%
MISSAUKEE	98	62	63%	80	49	61%
MONROE	697	464	67%	650	445	68%
MONTCALM	421	251	60%	397	281	71%
MONTMORENCY	47	32	68%	57	42	74%
MUSKEGON	1,436	871	61%	1,358	973	72%
NEWAYGO	333	206	62%	351	249	71%
OAKLAND	3,768	2,370	63%	3,622	2,486	69%
OCEANA	277	181	65%	278	195	70%
OGEMAW	135	109	81%	129	105	81%
ONTONAGON	28	19	68%	34	28	82%
OSCEOLA	155	86	55%	136	74	54%
OSCODA	52	40	77%	45	36	80%
OTSEGO	188	126	67%	147	88	60%
OTTAWA	1,209	601	50%	1,185	677	57%
PRESQUE ISLE	56	45	80%	48	32	67%
ROSCOMMON	131	93	71%	140	79	56%
SAGINAW	1,387	1,003	72%	1,350	1,114	83%
ST CLAIR	995	627	63%	909	579	64%
ST JOSEPH	512	264	52%	503	291	58%
SANILAC	261	190	73%	265	200	75%
SCHOOLCRAFT	42	35	83%	45	40	89%
SHIAWASSEE	415	304	73%	417	318	76%
TUSCOLA	311	229	74%	343	284	83%
VAN BUREN	617	351	57%	600	377	63%
WASHTENAW	1,238	574	46%	1,153	684	59%
DETROIT, CITY OF	9,365	6,451	69%	9,084	7,238	80%
WAYNE, ex Detroit	5,332	3,083	58%	5,184	3,605	70%
WEXFORD	266	175	66%	277	175	63%
MICHIGAN	57,846	37,046	64%	55,159	39,531	72%

**Table 5. Statewide Blood Lead Testing of Two and Three Year Old Children Enrolled in Managed Care
August 2009**

County	2 Years of Age			3 Years of Age		
	Eligibles	Eligibles with at least 1 test on or before their 2nd birthday	Percent of Eligibles with at least 1 test on or before their 2nd birthday	Eligibles	Eligibles with at least 1 test on or before their 3rd birthday	Percent of Eligibles with at least 1 test on or before their 3rd birthday
ALCONA	38	28	74%	35	31	89%
ALGER	36	30	83%	35	29	83%
ALLEGAN	547	341	62%	492	348	71%
ALPENA	147	115	78%	127	101	80%
ANTRIM	111	82	74%	96	70	73%
ARENAC	73	52	71%	74	52	70%
BARAGA	22	15	68%	32	23	72%
BARRY	173	122	71%	139	106	76%
BAY	515	401	78%	489	415	85%
BENZIE	72	52	72%	75	57	76%
BERRIEN	948	694	73%	936	675	72%
BRANCH	250	119	48%	256	142	55%
CALHOUN	891	637	71%	808	612	76%
CASS	256	148	58%	245	155	63%
CHARLEVOIX	54	44	81%	34	19	56%
CHEBOYGAN	64	42	66%	56	40	71%
CHIPPEWA	125	90	72%	114	85	75%
CLARE	95	62	65%	69	33	48%
CLINTON	207	141	68%	197	137	70%
CRAWFORD	57	30	53%	47	28	60%
DELTA	150	109	73%	155	125	81%
DICKINSON	117	95	81%	98	83	85%
EATON	354	250	71%	328	241	73%
EMMET	2	0	0%	4	2	50%
GENESEE	2,836	1,671	59%	2,672	1,962	73%
GLADWIN	112	85	76%	104	74	71%
GOGEBIC	71	47	66%	51	39	76%
GRAND TRAVERSE	163	86	53%	135	61	45%
GRATIOT	197	104	53%	207	151	73%
HILLSDALE	261	164	63%	220	164	75%
HOUGHTON	161	115	71%	160	116	73%
HURON	135	103	76%	127	105	83%
INGHAM	1,311	973	74%	1,306	1,076	82%
IONIA	289	158	55%	270	177	66%
IOSCO	131	95	73%	127	103	81%
IRON	55	45	82%	40	33	83%
ISABELLA	249	149	60%	248	169	68%
JACKSON	859	617	72%	775	620	80%
KALAMAZOO	1,197	874	73%	1,115	857	77%
KALKASKA	11	6	55%	13	9	69%
KENT	3,459	2,518	73%	3,093	2,487	80%
KEWEENAW	6	5	83%	6	4	67%

County	2 Years of Age			3 Years of Age		
	Eligibles	Eligibles with at least 1 test on or before their 2nd birthday	Percent of Eligibles with at least 1 test on or before their 2nd birthday	Eligibles	Eligibles with at least 1 test on or before their 3rd birthday	Percent of Eligibles with at least 1 test on or before their 3rd birthday
LAKE	67	40	60%	75	46	61%
LAPEER	333	198	59%	319	240	75%
LEELANAU	15	8	53%	9	6	67%
LENAWEE	495	358	72%	424	329	78%
LIVINGSTON	373	219	59%	382	215	56%
LUCE	26	22	85%	29	27	93%
MACKINAC	28	22	79%	27	25	93%
MACOMB	2,942	1,686	57%	2,797	1,720	61%
MANISTEE	92	75	82%	89	72	81%
MARQUETTE	233	177	76%	208	173	83%
MASON	167	119	71%	162	107	66%
MECOSTA	218	165	76%	208	161	77%
MENOMINEE	79	59	75%	66	54	82%
MIDLAND	137	49	36%	136	79	58%
MISSAUKEE	81	53	65%	67	43	64%
MONROE	553	390	71%	521	354	68%
MONTCALM	333	212	64%	303	220	73%
MONTMORENCY	31	22	71%	49	37	76%
MUSKEGON	1,198	754	63%	1,128	818	73%
NEWAYGO	267	167	63%	282	202	72%
OAKLAND	3,191	2,073	65%	3,068	2,171	71%
OCEANA	201	142	71%	216	153	71%
OGEMAW	113	92	81%	111	89	80%
ONTONAGON	24	16	67%	29	24	83%
OSCEOLA	124	66	53%	100	52	52%
OSCODA	40	34	85%	38	33	87%
OTSEGO	151	105	70%	109	70	64%
OTTAWA	892	463	52%	847	509	60%
PRESQUE ISLE	46	38	83%	39	28	72%
ROSCOMMON	113	81	72%	117	71	61%
SAGINAW	1,178	873	74%	1,160	968	83%
ST CLAIR	809	536	66%	758	500	66%
ST JOSEPH	428	229	54%	394	232	59%
SANILAC	212	157	74%	209	160	77%
SCHOOLCRAFT	31	27	87%	40	35	88%
SHIAWASSEE	351	258	74%	327	266	81%
TUSCOLA	236	174	74%	263	227	86%
VAN BUREN	442	257	58%	444	293	66%
WASHTENAW	1,068	499	47%	989	607	61%
DETROIT, CITY OF	8,262	5,744	70%	8,019	6,432	80%
WAYNE, ex Detroit	4,517	2,686	59%	4,390	3,098	71%
WEXFORD	105	74	70%	97	63	65%
MICHIGAN	47,009	30,933	66%	44,655	32,825	74%

Table 6. Statewide Blood Lead Testing of Two and Three Year Old Children Eligible for Medicaid Only Fee-for-Service Coverage

August 2009

County	2 Years of Age			3 Years of Age		
	Eligibles	Eligibles with at least 1 test on or before their 2nd birthday	Percent of Eligibles with at least 1 test on or before their 2nd birthday	Eligibles	Eligibles with at least 1 test on or before their 3rd birthday	Percent of Eligibles with at least 1 test on or before their 3rd birthday
ALCONA	6	4	67%	8	6	75%
ALGER	7	6	86%	8	7	88%
ALLEGAN	177	81	46%	171	96	56%
ALPENA	18	13	72%	28	19	68%
ANTRIM	20	13	65%	16	8	50%
ARENAC	22	14	64%	18	15	83%
BARAGA	23	22	96%	25	21	84%
BARRY	123	85	69%	117	73	62%
BAY	85	50	59%	87	66	76%
BENZIE	15	7	47%	18	12	67%
BERRIEN	191	101	53%	180	113	63%
BRANCH	56	18	32%	68	23	34%
CALHOUN	145	104	72%	131	91	69%
CASS	65	29	45%	60	33	55%
CHARLEVOIX	79	60	76%	87	68	78%
CHEBOYGAN	112	85	76%	92	62	67%
CHIPPEWA	79	60	76%	74	56	76%
CLARE	134	93	69%	116	75	65%
CLINTON	57	33	58%	52	32	62%
CRAWFORD	13	11	85%	10	7	70%
DELTA	38	24	63%	44	35	80%
DICKINSON	32	24	75%	21	17	81%
EATON	106	56	53%	87	61	70%
EMMET	154	105	68%	177	119	67%
GENESEEE	424	200	47%	430	275	64%
GLADWIN	32	24	75%	23	15	65%
GOGEBIC	22	9	41%	18	15	83%
GRAND TRAVERSE	262	125	48%	256	104	41%
GRATIOT	45	18	40%	48	32	67%
HILLSDALE	44	20	45%	39	18	46%
HOUGHTON	34	24	71%	25	20	80%
HURON	29	22	76%	42	27	64%
INGHAM	227	160	70%	170	122	72%
IONIA	71	36	51%	95	64	67%
IOSCO	20	14	70%	15	12	80%
IRON	9	5	56%	8	3	38%
ISABELLA	60	26	43%	70	39	56%
JACKSON	166	96	58%	152	96	63%
KALAMAZOO	190	133	70%	189	138	73%
KALKASKA	125	79	63%	119	63	53%
KENT	665	408	61%	617	438	71%
KEWEENAW	2	1	50%	1	0	0%

County	2 Years of Age			3 Years of Age		
	Eligibles	Eligibles with at least 1 test on or before their 2nd birthday	Percent of Eligibles with at least 1 test on or before their 2nd birthday	Eligibles	Eligibles with at least 1 test on or before their 3rd birthday	Percent of Eligibles with at least 1 test on or before their 3rd birthday
LAKE	13	5	38%	14	8	57%
LAPEER	70	25	36%	68	39	57%
LEELANAU	41	26	63%	41	20	49%
LENAWEE	106	67	63%	101	70	69%
LIVINGSTON	89	41	46%	78	29	37%
LUCE	7	6	86%	7	7	100%
MACKINAC	22	16	73%	27	25	93%
MACOMB	558	234	42%	555	292	53%
MANISTEE	27	14	52%	21	12	57%
MARQUETTE	47	32	68%	55	37	67%
MASON	40	28	70%	30	17	57%
MECOSTA	43	29	67%	57	35	61%
MENOMINEE	30	20	67%	27	18	67%
MIDLAND	217	77	35%	197	113	57%
MISSAUKEE	15	8	53%	11	5	45%
MONROE	126	63	50%	117	82	70%
MONTCALM	80	33	41%	83	52	63%
MONTMORENCY	10	4	40%	6	4	67%
MUSKEGON	210	102	49%	213	140	66%
NEWAYGO	55	31	56%	63	41	65%
OAKLAND	505	254	50%	488	271	56%
OCEANA	73	37	51%	59	41	69%
OGEMAW	16	12	75%	16	14	88%
ONTONAGON	3	2	67%	4	3	75%
OSCEOLA	23	14	61%	30	17	57%
OSCODA	12	6	50%	5	1	20%
OTSEGO	31	17	55%	28	12	43%
OTTAWA	298	128	43%	312	152	49%
PRESQUE ISLE	9	6	67%	9	4	44%
ROSCOMMON	13	7	54%	19	6	32%
SAGINAW	172	107	62%	170	130	76%
ST CLAIR	161	80	50%	139	74	53%
ST JOSEPH	71	31	44%	95	50	53%
SANILAC	46	31	67%	51	37	73%
SCHOOLCRAFT	11	8	73%	5	5	100%
SHIAWASSEE	56	39	70%	83	48	58%
TUSCOLA	63	46	73%	72	49	68%
VAN BUREN	164	87	53%	150	82	55%
WASHTENAW	142	58	41%	146	64	44%
DETROIT, CITY OF	928	585	63%	907	678	75%
WAYNE, ex Detroit	726	346	48%	692	432	62%
WEXFORD	155	96	62%	170	104	61%
MICHIGAN	9,668	5,356	55%	9,433	5,916	63%

**Table 7: Blood Lead Testing of Two Year Old Children by Length of Enrollment
August 2009**

Health Plan Name	Total Enrollment			Continuous Enrollment			
	Eligibles	Eligibles with at least 1 test on or before their 2nd birthday	Percent of Eligibles with at least 1 test on or before their 2nd birthday	Eligibles	Eligibles with at least 1 test on or before their 2nd birthday	Percent of Eligibles with at least 1 test on or before their 2nd birthday	Percentage Point Difference with Continuous Enrollment
BlueCaid of Michigan	993	462	47%	539	295	55%	8
CareSource Michigan	1,868	1,284	69%	1,123	858	76%	8
Great Lakes Health Plan, Inc.	8,320	5,437	65%	4,678	3,392	73%	7
Health Plan of Michigan, Inc.	9,776	6,517	67%	4,793	3,764	79%	12
HealthPlus Partners, Inc.	2,994	1,986	66%	1,905	1,397	73%	7
McLaren Health Plan	3,021	2,015	67%	1,654	1,263	76%	10
Midwest Health Plan	2,795	1,798	64%	1,669	1,228	74%	9
Molina Healthcare of Michigan	8,637	5,579	65%	5,268	3,670	70%	5
OmniCare Health Plan	1,715	1,165	68%	1,046	765	73%	5
PHP MM Family Care	785	590	75%	438	358	82%	7
Priority Health Government Programs, Inc.	3,005	2,014	67%	1,662	1,253	75%	8
ProCare Health Plan	59	20	34%	5	3	60%	26
Total Health Care	1,926	1,216	63%	1,144	791	69%	6
Upper Peninsula Health Plan	1,161	872	75%	734	629	86%	11
Managed Care Totals/Percent	47,055	30,955	66%	26,658	19,666	74%	8
Current Performance Monitoring Standard			N/A			75%	
FFS (Title XIX only)	9,681	5,361	55%	2,468	1,615	65%	10
FFS (Title V/XIX)	1,164	757	65%	948	627	66%	1
FFS Totals (Title XIX & V/XIX)	10,845	6,118	56%	3,416	2,242	66%	9

Total Enrollment

- Based on MMIS eligibility system
- Enrolled in plan (health plan or FFS) for the measurement month

Continuous Enrollment

- Based on MMIS eligibility system
- Enrolled in same plan (health plan or FFS) for the measurement month and 12 months preceding 2nd birthday, with 1-month allowable gap

**Table 8. Blood Lead Testing of Three Year Old Children by Length of Enrollment
August 2009**

Health Plan Name	Total Enrollment			Continuous Enrollment			
	Eligibles	Eligibles with at least 1 test on or before their 3rd birthday	Percent of Eligibles with at least 1 test on or before their 3rd birthday	Eligibles	Eligibles with at least 1 test on or before their 3rd birthday	Percent of Eligibles with at least 1 test on or before their 3rd birthday	Percentage Point Difference with Continuous Enrollment
BlueCaid of Michigan	944	571	60%	534	372	70%	9
CareSource Michigan	1,738	1,271	73%	1,041	825	79%	6
Great Lakes Health Plan, Inc.	7,814	5,624	72%	4,335	3,418	79%	7
Health Plan of Michigan, Inc.	8,764	6,176	70%	4,238	3,454	82%	11
HealthPlus Partners, Inc.	2,767	2,174	79%	1,763	1,495	85%	6
McLaren Health Plan	3,059	2,313	76%	1,724	1,455	84%	9
Midwest Health Plan	2,558	1,857	73%	1,474	1,186	80%	8
Molina Healthcare of Michigan	8,680	6,507	75%	5,507	4,367	79%	4
OmniCare Health Plan	1,780	1,403	79%	1,142	958	84%	5
PHP MM Family Care	753	607	81%	440	385	88%	7
Priority Health Government Programs, Inc.	2,815	2,085	74%	1,605	1,341	84%	9
ProCare Health Plan	42	23	55%	2	2	100%	45
Total Health Care	1,878	1,356	72%	1,137	895	79%	7
Upper Peninsula Health Plan	1,086	871	80%	683	599	88%	7
Managed Care Totals/Percent	44,678	32,838	73%	25,625	20,752	81%	7
FFS (Title XIX only)	9,441	5,918	63%	2,693	1,888	70%	7
FFS (Title V/XIX)	1,068	788	74%	963	732	76%	2
FFS Totals (Title XIX & V/XIX)	10,509	6,706	64%	3,656	2,620	72%	8

Total Enrollment

- Based on MMIS eligibility system
- Enrolled in plan (health plan or FFS) for the measurement month

Continuous Enrollment

- Based on MMIS eligibility system
- Enrolled in same plan (health plan or FFS) for the measurement month and 12 months preceding 3rd birthday, with 1-month allowable gap